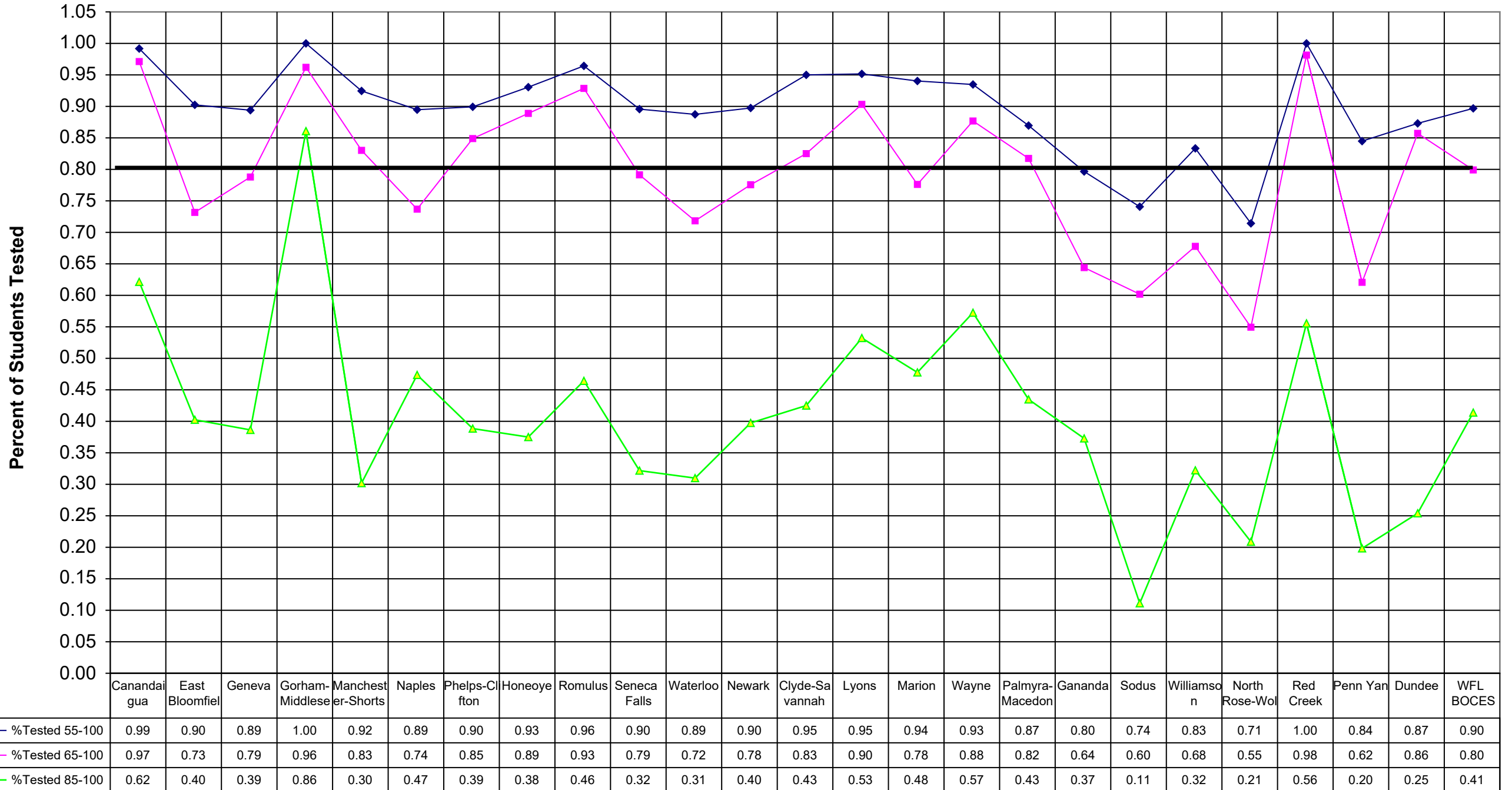


1998 Regents Seq Math 2



District	%Tested 55-100	%Tested 65-100	%Tested 85-100	Tested	55-100	65-100
Canandaigua	0.99	0.97	0.62	243	241	236
East Bloomfield	0.90	0.73	0.40	82	74	60
Geneva	0.89	0.79	0.39	132	118	104
Gorham-Middlesex	1.00	0.96	0.86	79	79	76
Manchester-Shortsville	0.92	0.83	0.30	53	49	44
Naples	0.89	0.74	0.47	57	51	42
Phelps-Clifton Springs	0.90	0.85	0.39	139	125	118
Honeoye	0.93	0.89	0.38	72	67	64
Romulus	0.96	0.93	0.46	28	27	26
Seneca Falls	0.90	0.79	0.32	115	103	91
Waterloo	0.89	0.72	0.31	71	63	51
Newark	0.90	0.78	0.40	156	140	121
Clyde-Savannah	0.95	0.83	0.43	40	38	33
Lyons	0.95	0.90	0.53	62	59	56
Marion	0.94	0.78	0.48	67	63	52
Wayne	0.93	0.88	0.57	138	129	121
Palmyra-Macedon	0.87	0.82	0.43	115	100	94
Gananda	0.80	0.64	0.37	59	47	38
Sodus	0.74	0.60	0.11	108	80	65
Williamson	0.83	0.68	0.32	90	75	61
North Rose-Wolcott	0.71	0.55	0.21	91	65	50
Red Creek	1.00	0.98	0.56	54	54	53
Penn Yan	0.84	0.62	0.20	116	98	72
Dundee	0.87	0.86	0.25	63	55	54
WFL BOCES	0.90	0.80	0.41	2230	2000	1782
Victor	0.00	0.00	0.00	1		

85-100
151
33
51
68
16
27
54
27
13
37
22
62
17
33
32
79
50
22
12
29
19
30
23
16
923