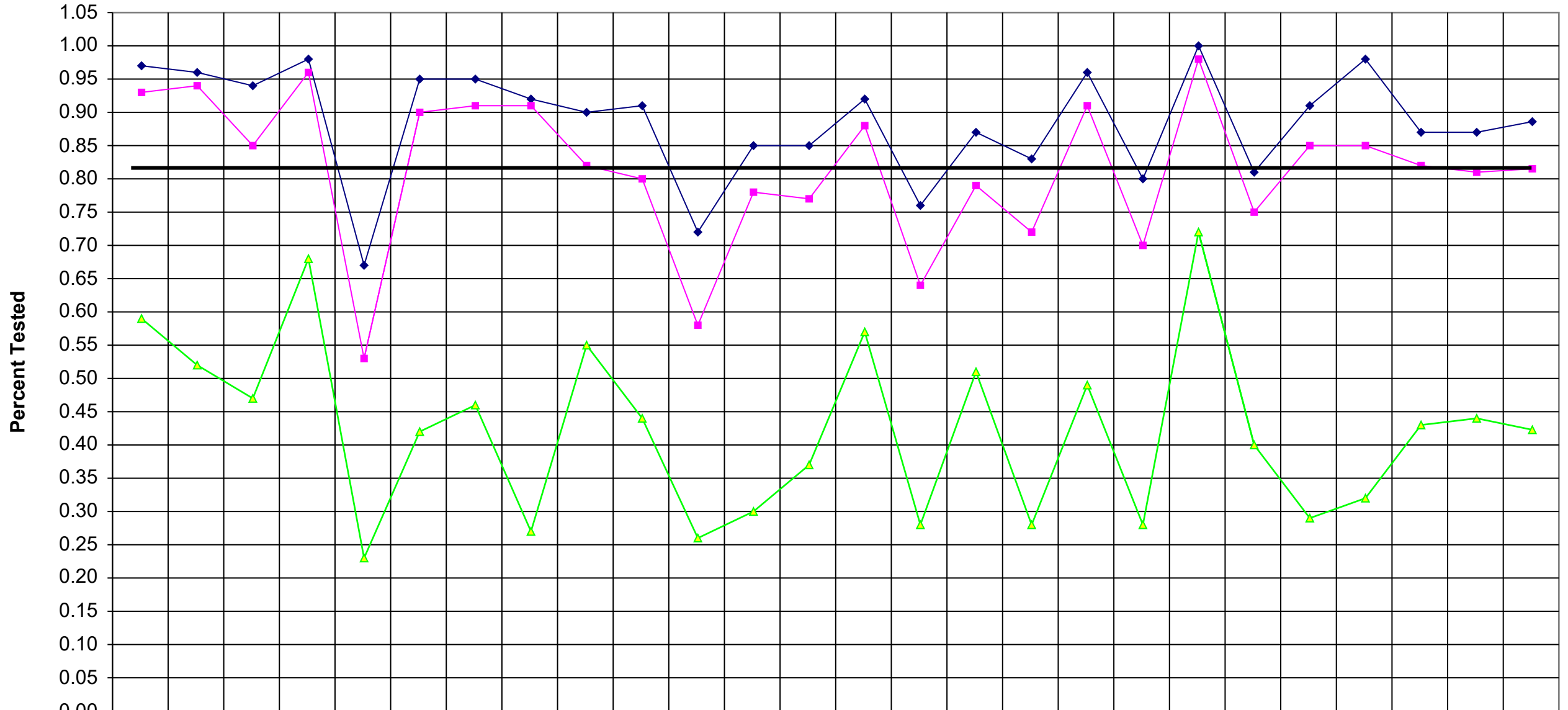
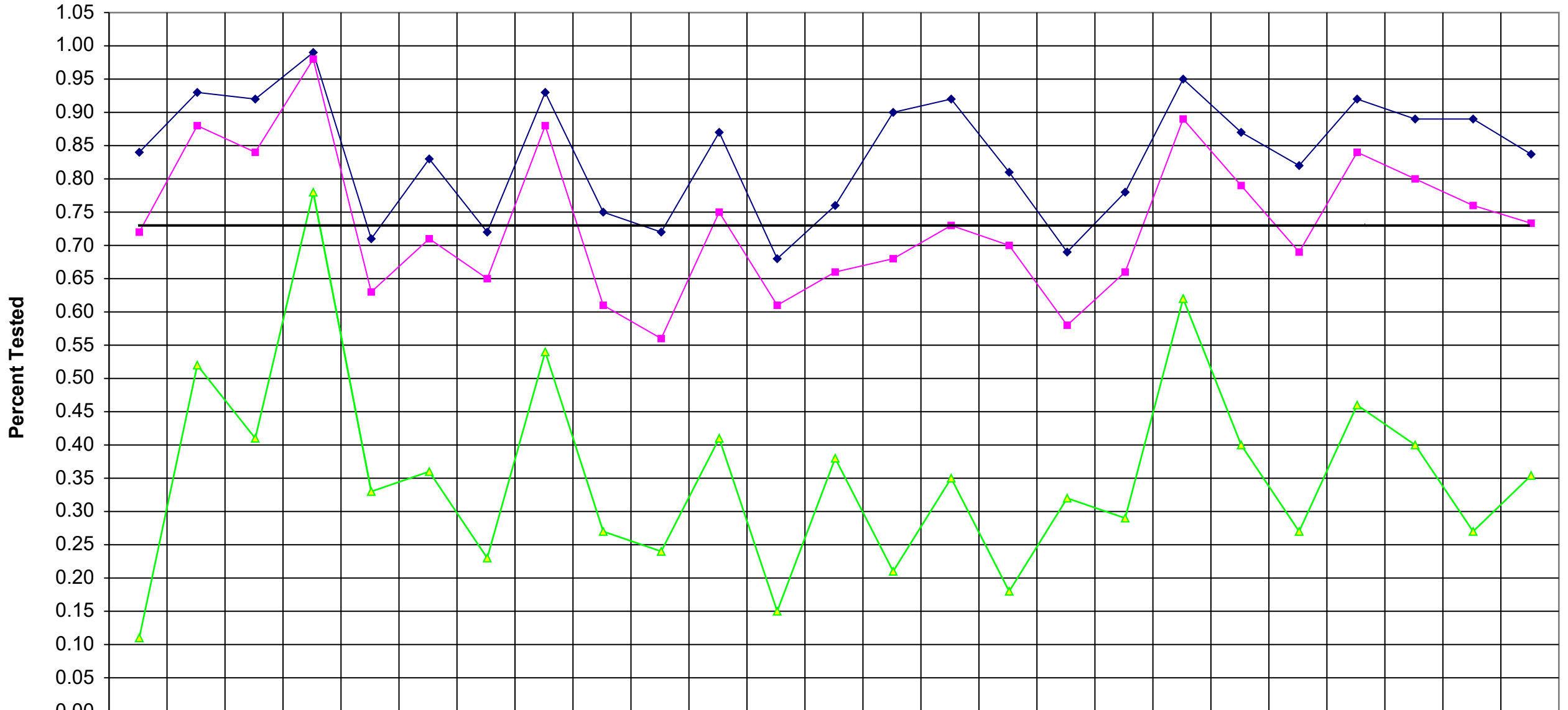


# 1998 Seq Math 1



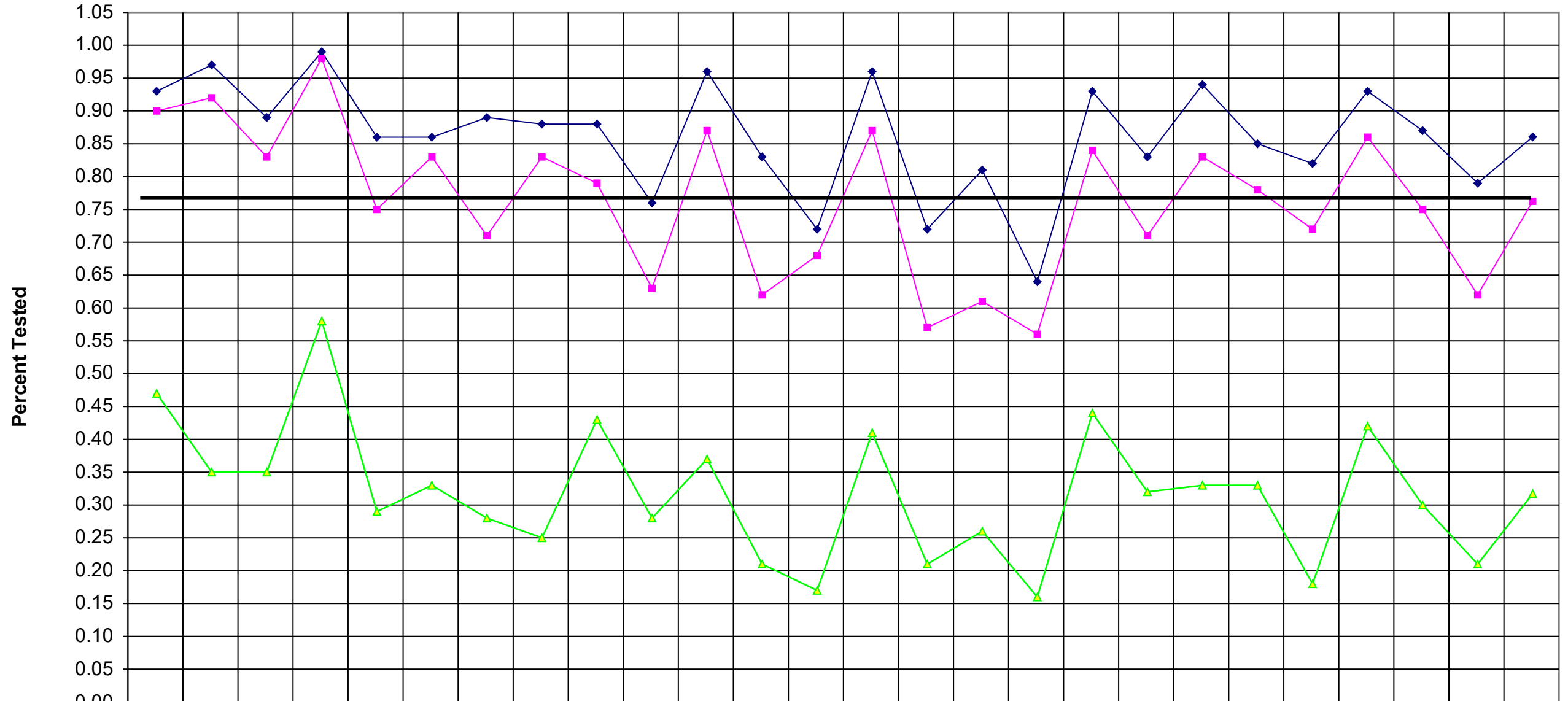
	Canandaigua	East Bloomfield	Geneva	Gorham-Middlesex	Manchester-Short	Naples	Phelps-Clyfton	Honeoye	Victor	Newark	Clyde-Savannah	Lyons	Marion	Wayne	Palmyra-Macedon	Gananda	Sodus	Williamson	North Rose	Red Creek	Penn Yan	Dundee	Romulus	Seneca Falls	Waterloo	WFL BOCES
◆ %tested55-100	0.97	0.96	0.94	0.98	0.67	0.95	0.95	0.92	0.90	0.91	0.72	0.85	0.85	0.92	0.76	0.87	0.83	0.96	0.80	1.00	0.81	0.91	0.98	0.87	0.87	0.89
■ %tested65-100	0.93	0.94	0.85	0.96	0.53	0.90	0.91	0.91	0.82	0.80	0.58	0.78	0.77	0.88	0.64	0.79	0.72	0.91	0.70	0.98	0.75	0.85	0.85	0.82	0.81	0.82
▲ %tested85-100	0.59	0.52	0.47	0.68	0.23	0.42	0.46	0.27	0.55	0.44	0.26	0.30	0.37	0.57	0.28	0.51	0.28	0.49	0.28	0.72	0.40	0.29	0.32	0.43	0.44	0.42

# 2000 Seq Math 1



◆ %tested55-100	0.84	0.93	0.92	0.99	0.71	0.83	0.72	0.93	0.75	0.72	0.87	0.68	0.76	0.90	0.92	0.81	0.69	0.78	0.95	0.87	0.82	0.92	0.89	0.89	0.84
■ %tested65-100	0.72	0.88	0.84	0.98	0.63	0.71	0.65	0.88	0.61	0.56	0.75	0.61	0.66	0.68	0.73	0.70	0.58	0.66	0.89	0.79	0.69	0.84	0.80	0.76	0.73
▲ %tested85-100	0.11	0.52	0.41	0.78	0.33	0.36	0.23	0.54	0.27	0.24	0.41	0.15	0.38	0.21	0.35	0.18	0.32	0.29	0.62	0.40	0.27	0.46	0.40	0.27	0.35

# 1999 Seq Math 1



	Canandaigua	East Bloomfield	Geneva	Gorham-Middlesex	Manchester-Short	Naples	Phelps-Clyffton	Honeoye	Victor	Newark	Clyde-Savannah	Lyons	Marion	Wayne	Palmyra-Macedon	Gananda	Sodus	Williamson	North Rose	Red Creek	Penn Yan	Dundee	Romulus	Seneca Falls	Waterloo	WFL BOCES
◆ %tested55-100	0.93	0.97	0.89	0.99	0.86	0.86	0.89	0.88	0.88	0.76	0.96	0.83	0.72	0.96	0.72	0.81	0.64	0.93	0.83	0.94	0.85	0.82	0.93	0.87	0.79	0.86
■ %tested65-100	0.90	0.92	0.83	0.98	0.75	0.83	0.71	0.83	0.79	0.63	0.87	0.62	0.68	0.87	0.57	0.61	0.56	0.84	0.71	0.83	0.78	0.72	0.86	0.75	0.62	0.76
▲ %tested85-100	0.47	0.35	0.35	0.58	0.29	0.33	0.28	0.25	0.43	0.28	0.37	0.21	0.17	0.41	0.21	0.26	0.16	0.44	0.32	0.33	0.33	0.18	0.42	0.30	0.21	0.32

DISTRICT_CD	District Name	%tested55-100	%tested65-100	%tested85-100	YEAR	SUBJECT_
430300	Canandaigua	0.97	0.93	0.59	1998	REG_SQM
430501	East Bloomfield	0.96	0.94	0.52	1998	REG_SQM
430700	Geneva	0.94	0.85	0.47	1998	REG_SQM
430901	Gorham-Middlesex	0.98	0.96	0.68	1998	REG_SQM
431101	Manchester-Shortsville	0.67	0.53	0.23	1998	REG_SQM
431201	Naples	0.95	0.90	0.42	1998	REG_SQM
431301	Phelps-Clifton Springs	0.95	0.91	0.46	1998	REG_SQM
431401	Honeoye	0.92	0.91	0.27	1998	REG_SQM
431701	Victor	0.90	0.82	0.55	1998	REG_SQM
650101	Newark	0.91	0.80	0.44	1998	REG_SQM
650301	Clyde-Savannah	0.72	0.58	0.26	1998	REG_SQM
650501	Lyons	0.85	0.78	0.30	1998	REG_SQM
650701	Marion	0.85	0.77	0.37	1998	REG_SQM
650801	Wayne	0.92	0.88	0.57	1998	REG_SQM
650901	Palmyra-Macedon	0.76	0.64	0.28	1998	REG_SQM
650902	Gananda	0.87	0.79	0.51	1998	REG_SQM
651201	Sodus	0.83	0.72	0.28	1998	REG_SQM
651402	Williamson	0.96	0.91	0.49	1998	REG_SQM
651501	North Rose -Wolcott	0.80	0.70	0.28	1998	REG_SQM
651503	Red Creek	1.00	0.98	0.72	1998	REG_SQM
680601	Penn Yan	0.81	0.75	0.40	1998	REG_SQM
680801	Dundee	0.91	0.85	0.29	1998	REG_SQM
560603	Romulus	0.98	0.85	0.32	1998	REG_SQM
560701	Seneca Falls	0.87	0.82	0.43	1998	REG_SQM
561006	Waterloo	0.87	0.81	0.44	1998	REG_SQM
	WFL BOCES	0.89	0.82	0.42		

DISTRICT_CD	District Name	%tested55-100	%tested65-100	%tested85-100	YEAR	SUBJECT_
430300	Canandaigua	0.93	0.90	0.47	1999	REG_SQM
430501	East Bloomfield	0.97	0.92	0.35	1999	REG_SQM
430700	Geneva	0.89	0.83	0.35	1999	REG_SQM
430901	Gorham-Middlesex	0.99	0.98	0.58	1999	REG_SQM
431101	Manchester-Shortsville	0.86	0.75	0.29	1999	REG_SQM
431201	Naples	0.86	0.83	0.33	1999	REG_SQM
431301	Phelps-Clifton Springs	0.89	0.71	0.28	1999	REG_SQM
431401	Honeoye	0.88	0.83	0.25	1999	REG_SQM
431701	Victor	0.88	0.79	0.43	1999	REG_SQM
650101	Newark	0.76	0.63	0.28	1999	REG_SQM
650301	Clyde-Savannah	0.96	0.87	0.37	1999	REG_SQM
650501	Lyons	0.83	0.62	0.21	1999	REG_SQM
650701	Marion	0.72	0.68	0.17	1999	REG_SQM
650801	Wayne	0.96	0.87	0.41	1999	REG_SQM
650901	Palmyra-Macedon	0.72	0.57	0.21	1999	REG_SQM
650902	Gananda	0.81	0.61	0.26	1999	REG_SQM
651201	Sodus	0.64	0.56	0.16	1999	REG_SQM
651402	Williamson	0.93	0.84	0.44	1999	REG_SQM
651501	North Rose -Wolcott	0.83	0.71	0.32	1999	REG_SQM
651503	Red Creek	0.94	0.83	0.33	1999	REG_SQM
680601	Penn Yan	0.85	0.78	0.33	1999	REG_SQM
680801	Dundee	0.82	0.72	0.18	1999	REG_SQM
560603	Romulus	0.93	0.86	0.42	1999	REG_SQM

560701	Seneca Falls	0.87	0.75	0.30	1999 REG_SQM
561006	Waterloo	0.79	0.62	0.21	1999 REG_SQM
	WFL BOCES	0.86	0.76	0.32	

DISTRICT_CD	District Name	%tested55-100	%tested65-100	%tested85-100	YEAR	SUBJECT_
430300	Canandaigua	0.84	0.72	0.11	2000	REG_SQM
430501	East Bloomfield	0.93	0.88	0.52	2000	REG_SQM
430700	Geneva	0.92	0.84	0.41	2000	REG_SQM
430901	Gorham-Middlesex	0.99	0.98	0.78	2000	REG_SQM
431101	Manchester-Shortsville	0.71	0.63	0.33	2000	REG_SQM
431301	Phelps-Clifton Springs	0.83	0.71	0.36	2000	REG_SQM
431401	Honeoye	0.72	0.65	0.23	2000	REG_SQM
431701	Victor	0.93	0.88	0.54	2000	REG_SQM
650101	Newark	0.75	0.61	0.27	2000	REG_SQM
650301	Clyde-Savannah	0.72	0.56	0.24	2000	REG_SQM
650501	Lyons	0.87	0.75	0.41	2000	REG_SQM
650701	Marion	0.68	0.61	0.15	2000	REG_SQM
650801	Wayne	0.76	0.66	0.38	2000	REG_SQM
650901	Palmyra-Macedon	0.90	0.68	0.21	2000	REG_SQM
650902	Gananda	0.92	0.73	0.35	2000	REG_SQM
651201	Sodus	0.81	0.70	0.18	2000	REG_SQM
651402	Williamson	0.69	0.58	0.32	2000	REG_SQM
651501	North Rose -Wolcott	0.78	0.66	0.29	2000	REG_SQM
651503	Red Creek	0.95	0.89	0.62	2000	REG_SQM
680601	Penn Yan	0.87	0.79	0.40	2000	REG_SQM
680801	Dundee	0.82	0.69	0.27	2000	REG_SQM
560603	Romulus	0.92	0.84	0.46	2000	REG_SQM
560701	Seneca Falls	0.89	0.80	0.40	2000	REG_SQM
561006	Waterloo	0.89	0.76	0.27	2000	REG_SQM
	WFL BOCES	0.84	0.73	0.35		

Tested

274  
89  
168  
120  
94  
83  
151  
64  
221  
224  
106  
73  
94  
169  
207  
78  
90  
90  
133  
61  
178  
65  
47  
91  
116  
3086

Tested

335  
91  
219  
130  
84  
94  
205  
100  
254  
228  
95  
81  
82  
180  
247  
72  
109  
116  
145  
81  
211  
68  
43

126  
146  
3542

Tested

88  
107  
212  
129  
82  
214  
95  
223  
228  
50  
95  
74  
203  
62  
26  
113  
126  
179  
76  
200  
88  
50  
117  
164  
3001