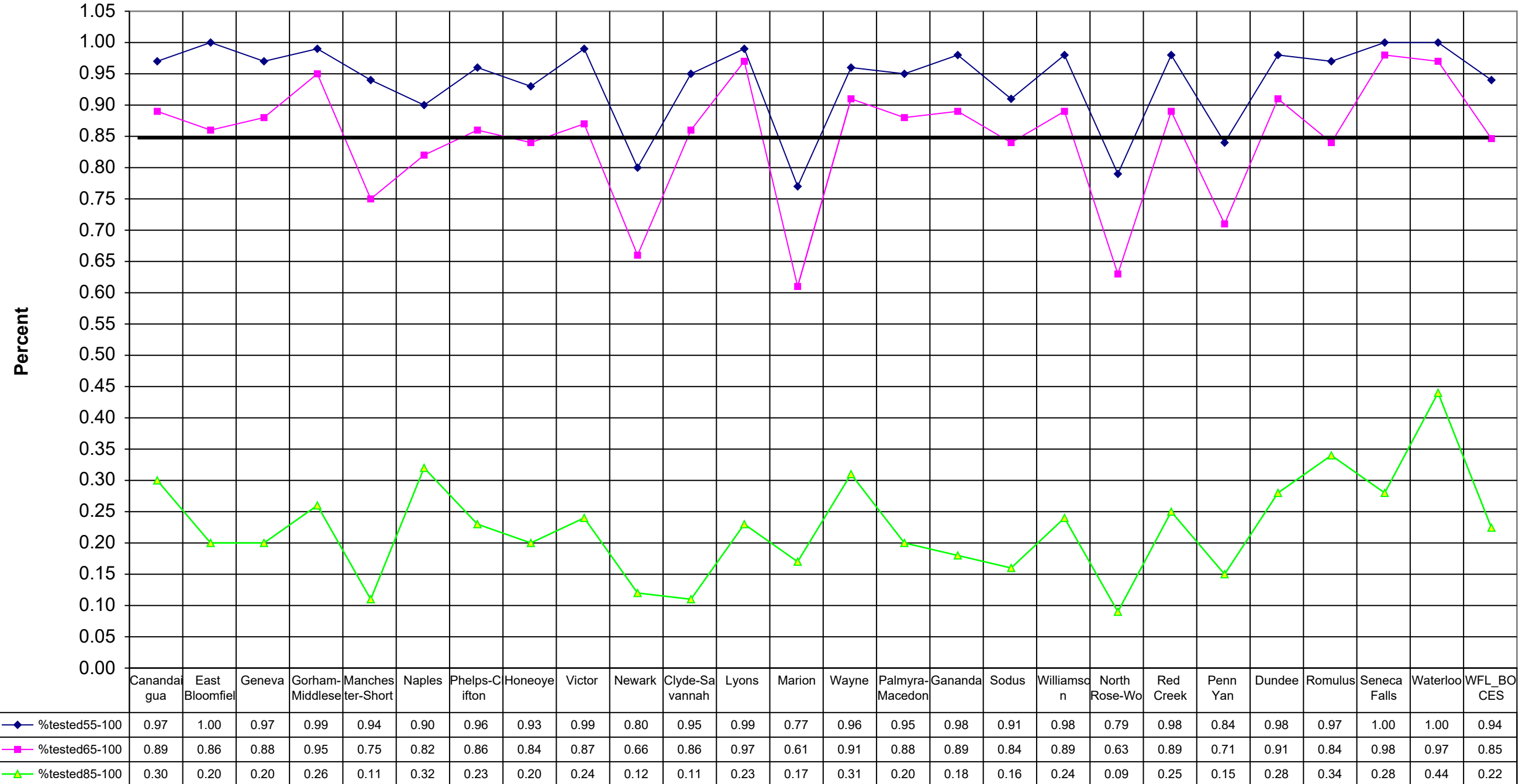
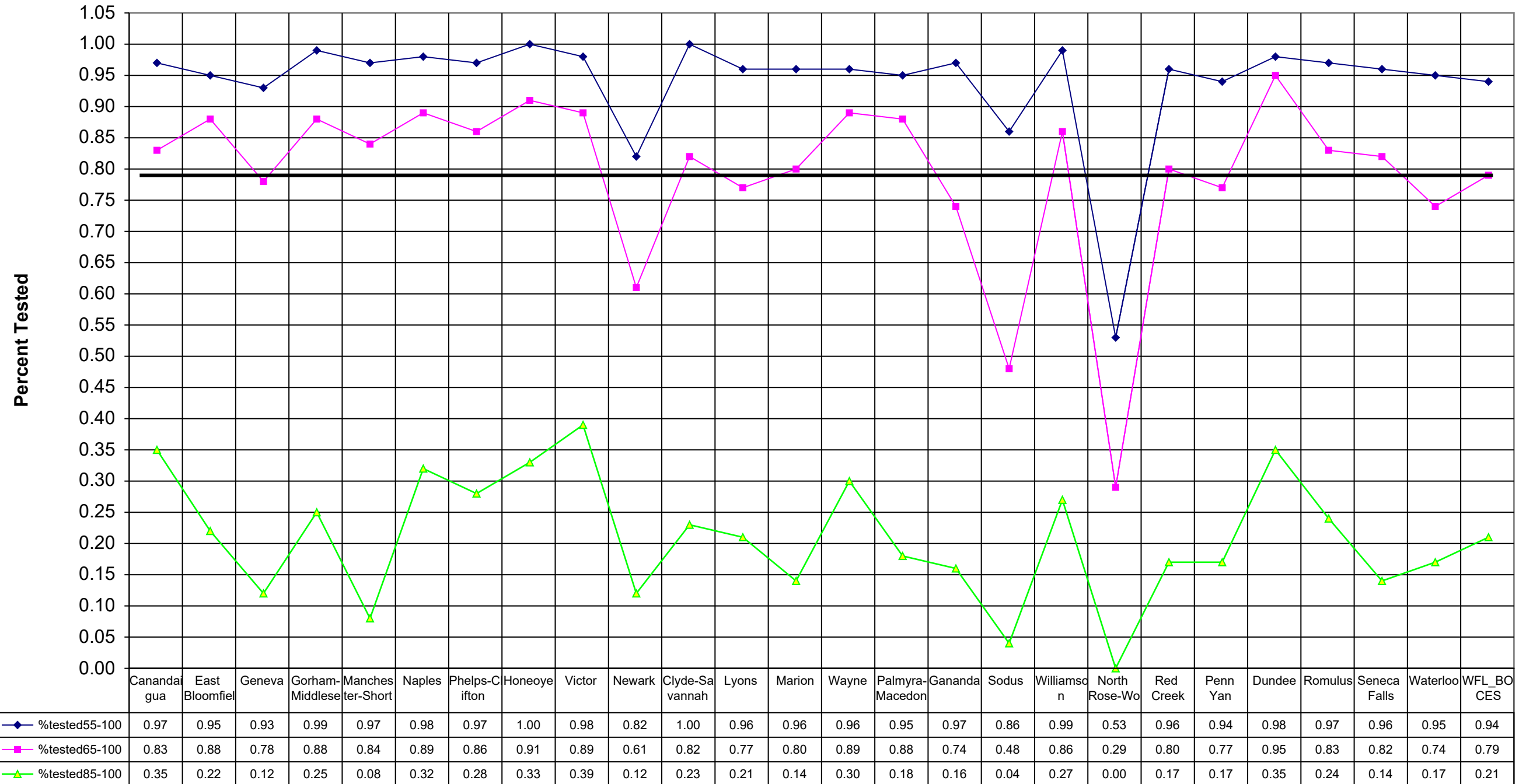


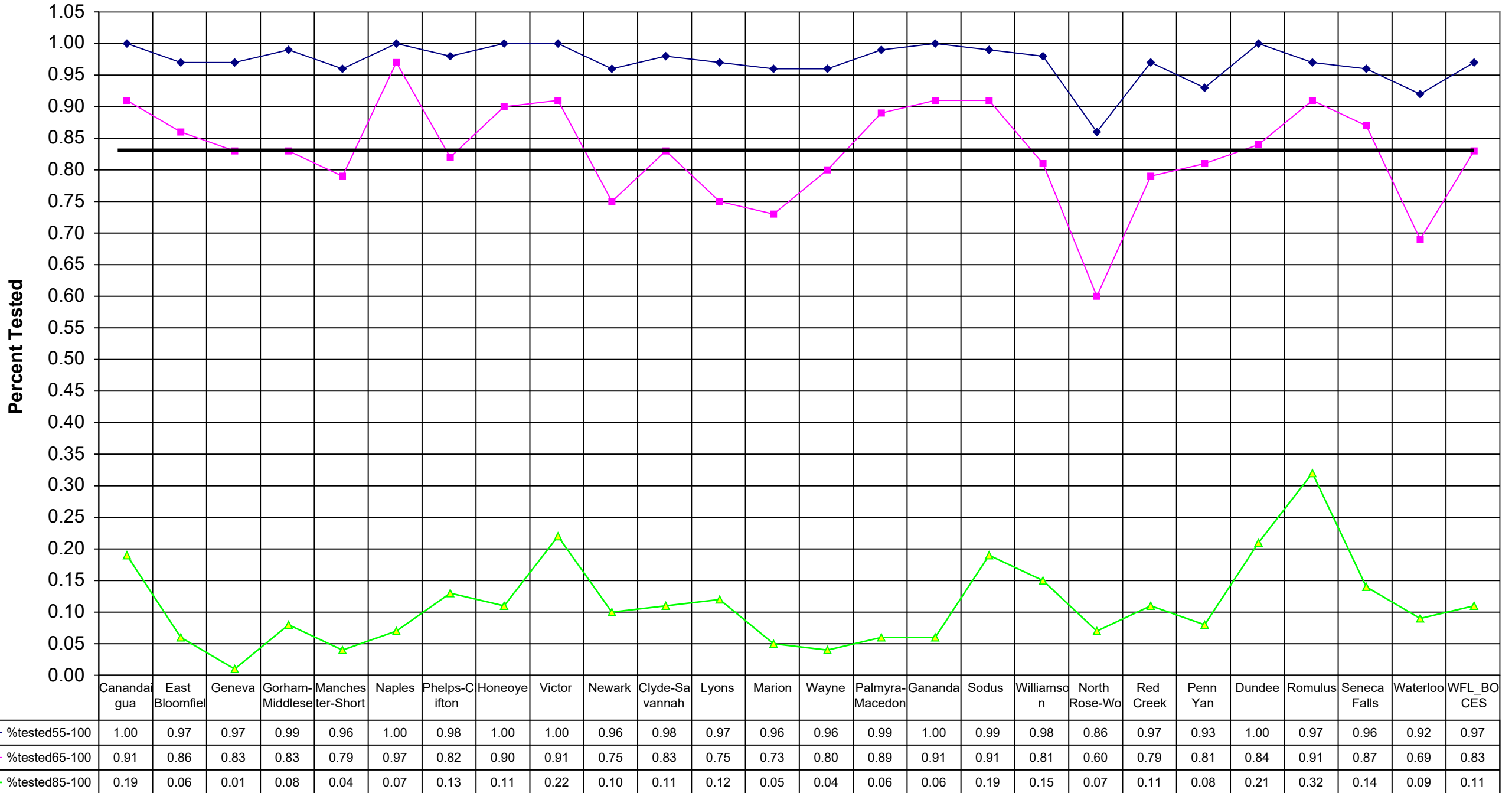
1998 Regents ELA



1999 Regents ELA



2000 Regents ELA



District_Name	%tested55-100	%tested65-100	%tested85-100	YEAR	SUBJECT_CD	Tested
Canandaigua	1.00	0.91	0.19	2000	REG_ENG	277
East Bloomfield	0.97	0.86	0.06	2000	REG_ENG	95
Geneva	0.97	0.83	0.01	2000	REG_ENG	161
Gorham-Middlesex	0.99	0.83	0.08	2000	REG_ENG	115
Manchester-Shortsville	0.96	0.79	0.04	2000	REG_ENG	57
Naples	1.00	0.97	0.07	2000	REG_ENG	59
Phelps-Clifton Springs	0.98	0.82	0.13	2000	REG_ENG	149
Honeoye	1.00	0.90	0.11	2000	REG_ENG	63
Victor	1.00	0.91	0.22	2000	REG_ENG	198
Newark	0.96	0.75	0.10	2000	REG_ENG	216
Clyde-Savannah	0.98	0.83	0.11	2000	REG_ENG	64
Lyons	0.97	0.75	0.12	2000	REG_ENG	68
Marion	0.96	0.73	0.05	2000	REG_ENG	73
Wayne	0.96	0.80	0.04	2000	REG_ENG	183
Palmyra-Macedon	0.99	0.89	0.06	2000	REG_ENG	147
Gananda	1.00	0.91	0.06	2000	REG_ENG	67
Sodus	0.99	0.91	0.19	2000	REG_ENG	77
Williamson	0.98	0.81	0.15	2000	REG_ENG	101
North Rose-Wolcott	0.86	0.60	0.07	2000	REG_ENG	107
Red Creek	0.97	0.79	0.11	2000	REG_ENG	72
Penn Yan	0.93	0.81	0.08	2000	REG_ENG	148
Dundee	1.00	0.84	0.21	2000	REG_ENG	61
Romulus	0.97	0.91	0.32	2000	REG_ENG	34
Seneca Falls	0.96	0.87	0.14	2000	REG_ENG	98
Waterloo	0.92	0.69	0.09	2000	REG_ENG	126
WFL_BOCES	0.97	0.83	0.11			2816

%tested55-100	%tested65-100	%tested85-100	YEAR	SUBJECT_CD	Tested	%tested55-100
0.97	0.83	0.35	1999	REG_ENG	312	0.97
0.95	0.88	0.22	1999	REG_ENG	76	1.00
0.93	0.78	0.12	1999	REG_ENG	135	0.97
0.99	0.88	0.25	1999	REG_ENG	121	0.99
0.97	0.84	0.08	1999	REG_ENG	63	0.94
0.98	0.89	0.32	1999	REG_ENG	63	0.90
0.97	0.86	0.28	1999	REG_ENG	153	0.96
1.00	0.91	0.33	1999	REG_ENG	81	0.93
0.98	0.89	0.39	1999	REG_ENG	189	0.99
0.82	0.61	0.12	1999	REG_ENG	196	0.80
1.00	0.82	0.23	1999	REG_ENG	61	0.95
0.96	0.77	0.21	1999	REG_ENG	81	0.99
0.96	0.80	0.14	1999	REG_ENG	97	0.77
0.96	0.89	0.30	1999	REG_ENG	175	0.96
0.95	0.88	0.18	1999	REG_ENG	169	0.95
0.97	0.74	0.16	1999	REG_ENG	61	0.98
0.86	0.48	0.04	1999	REG_ENG	99	0.91
0.99	0.86	0.27	1999	REG_ENG	111	0.98
0.53	0.29	0.00	1999	REG_ENG	17	0.79
0.96	0.80	0.17	1999	REG_ENG	69	0.98
0.94	0.77	0.17	1999	REG_ENG	206	0.84
0.98	0.95	0.35	1999	REG_ENG	57	0.98
0.97	0.83	0.24	1999	REG_ENG	29	0.97
0.96	0.82	0.14	1999	REG_ENG	105	1.00
0.95	0.74	0.17	1999	REG_ENG	110	1.00
0.94	0.79	0.21			2836	0.94

%tested65-100	%tested85-100	YEAR	SUBJECT_CD	Tested
0.89	0.30	1998	REG_ENG	227
0.86	0.20	1998	REG_ENG	74
0.88	0.20	1998	REG_ENG	128
0.95	0.26	1998	REG_ENG	86
0.75	0.11	1998	REG_ENG	72
0.82	0.32	1998	REG_ENG	62
0.86	0.23	1998	REG_ENG	140
0.84	0.20	1998	REG_ENG	69
0.87	0.24	1998	REG_ENG	189
0.66	0.12	1998	REG_ENG	160
0.86	0.11	1998	REG_ENG	63
0.97	0.23	1998	REG_ENG	70
0.61	0.17	1998	REG_ENG	88
0.91	0.31	1998	REG_ENG	182
0.88	0.20	1998	REG_ENG	140
0.89	0.18	1998	REG_ENG	45
0.84	0.16	1998	REG_ENG	101
0.89	0.24	1998	REG_ENG	83
0.63	0.09	1998	REG_ENG	134
0.89	0.25	1998	REG_ENG	53
0.71	0.15	1998	REG_ENG	165
0.91	0.28	1998	REG_ENG	54
0.84	0.34	1998	REG_ENG	32
0.98	0.28	1998	REG_ENG	92
0.97	0.44	1998	REG_ENG	78
0.85	0.22			2587