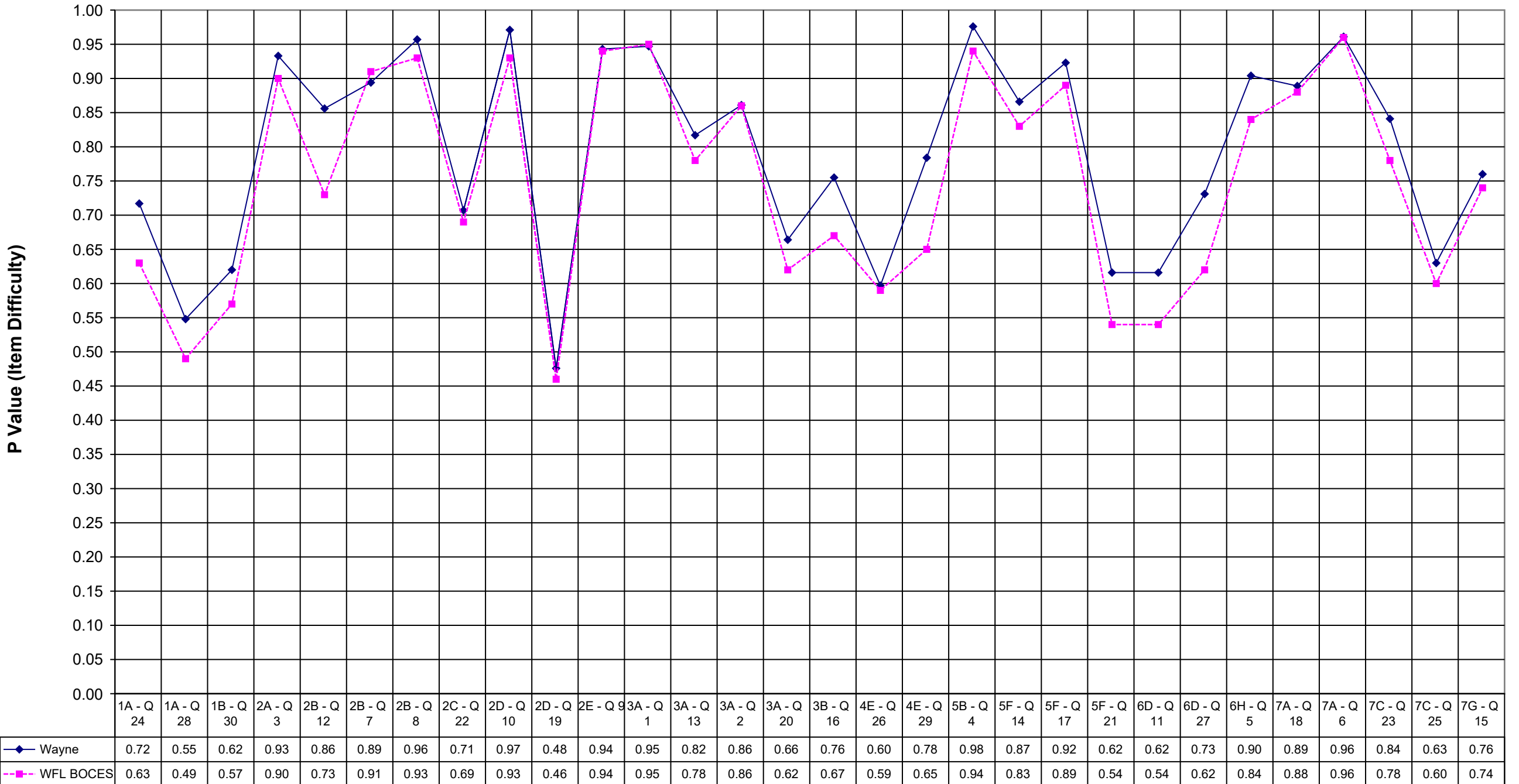
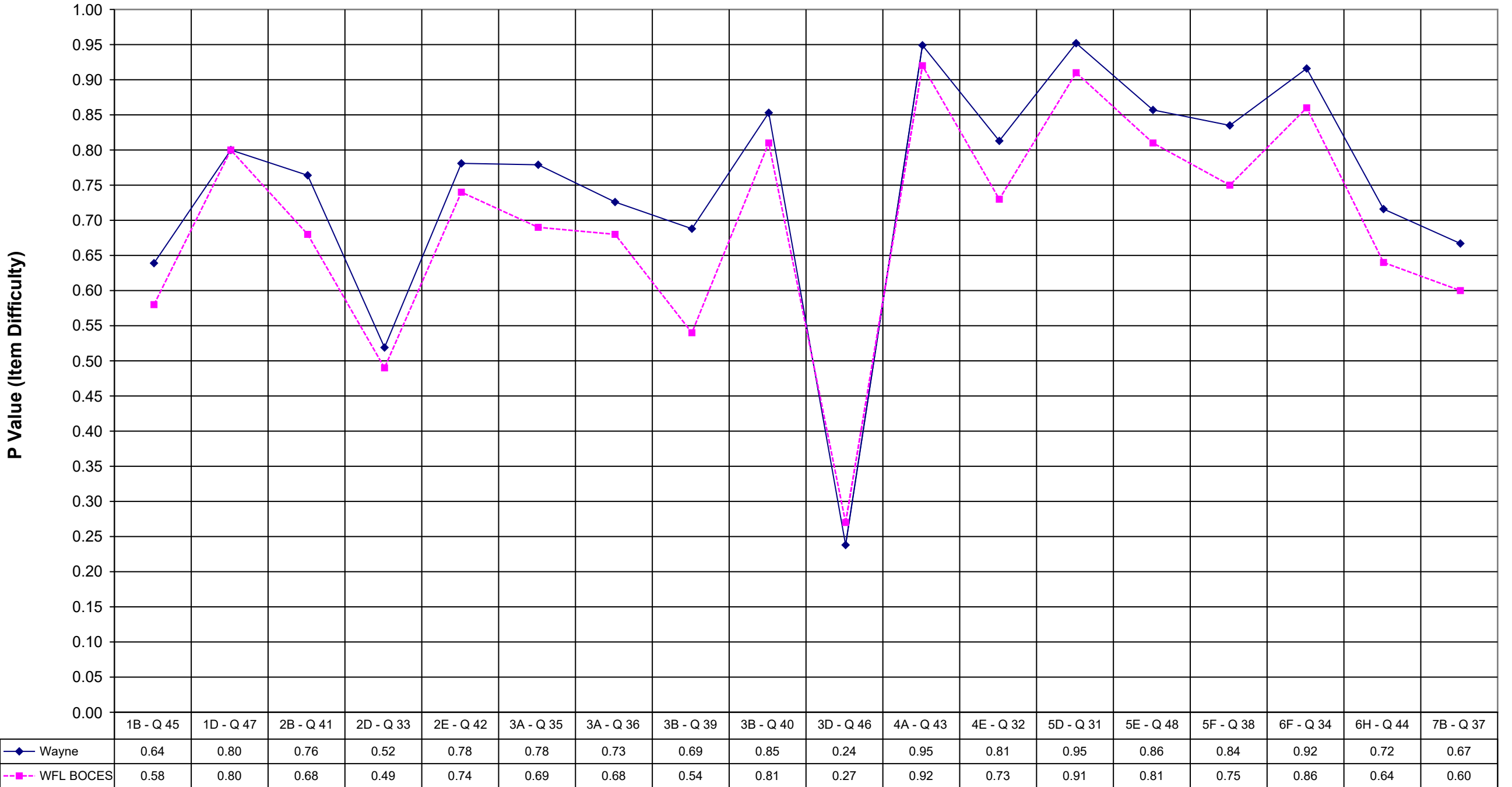


2004 Wayne Math 4 Multiple Choice



2004 Wayne Math 4 Extended Response



Wayne WFL BOCES

1A - Q 24	0.72	0.63	
1A - Q 28	0.55	0.49	
1B - Q 30	0.62	0.57	
2A - Q 3	0.93	0.90	
2B - Q 12	0.86	0.73	
2B - Q 7	0.89	0.91	
2B - Q 8	0.96	0.93	
2C - Q 22	0.71	0.69	
2D - Q 10	0.97	0.93	
2D - Q 19	0.48	0.46	
2E - Q 9	0.94	0.94	
3A - Q 1	0.95	0.95	
3A - Q 13	0.82	0.78	
3A - Q 2	0.86	0.86	
3A - Q 20	0.66	0.62	
3B - Q 16	0.76	0.67	
4E - Q 26	0.60	0.59	
4E - Q 29	0.78	0.65	
5B - Q 4	0.98	0.94	
5F - Q 14	0.87	0.83	
5F - Q 17	0.92	0.89	
5F - Q 21	0.62	0.54	
6D - Q 11	0.62	0.54	
6D - Q 27	0.73	0.62	
6H - Q 5	0.90	0.84	
7A - Q 18	0.89	0.88	
7A - Q 6	0.96	0.96	
7C - Q 23	0.84	0.78	
7C - Q 25	0.63	0.60	
7G - Q 15	0.76	0.74	

Wayne WFL BOCES

1B - Q 45	0.64	0.58
1D - Q 47	0.80	0.80
2B - Q 41	0.76	0.68
2D - Q 33	0.52	0.49
2E - Q 42	0.78	0.74
3A - Q 35	0.78	0.69
3A - Q 36	0.73	0.68
3B - Q 39	0.69	0.54
3B - Q 40	0.85	0.81
3D - Q 46	0.24	0.27
4A - Q 43	0.95	0.92
4E - Q 32	0.81	0.73
5D - Q 31	0.95	0.91
5E - Q 48	0.86	0.81
5F - Q 38	0.84	0.75
6F - Q 34	0.92	0.86
6H - Q 44	0.72	0.64
7B - Q 37	0.67	0.60