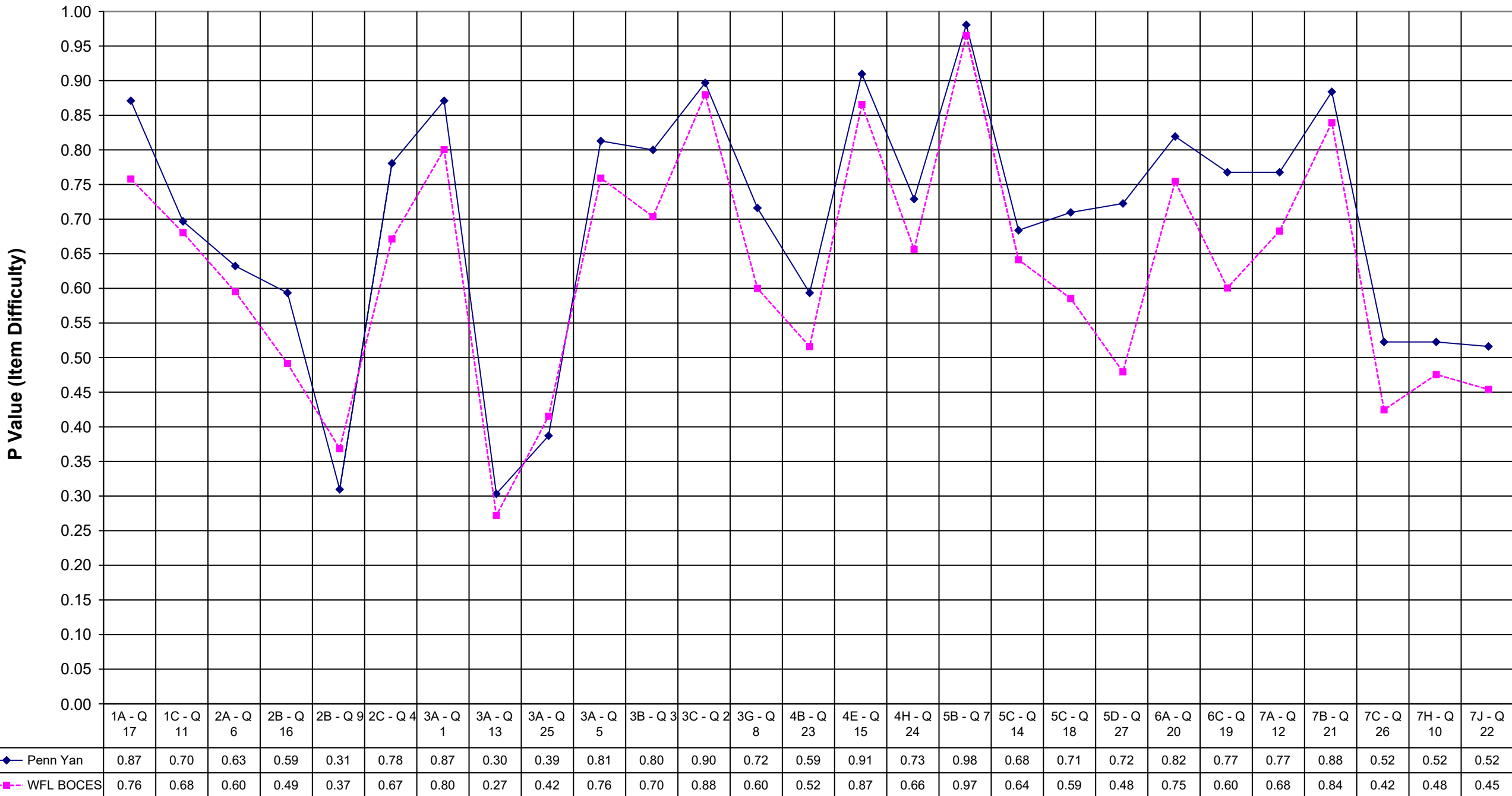
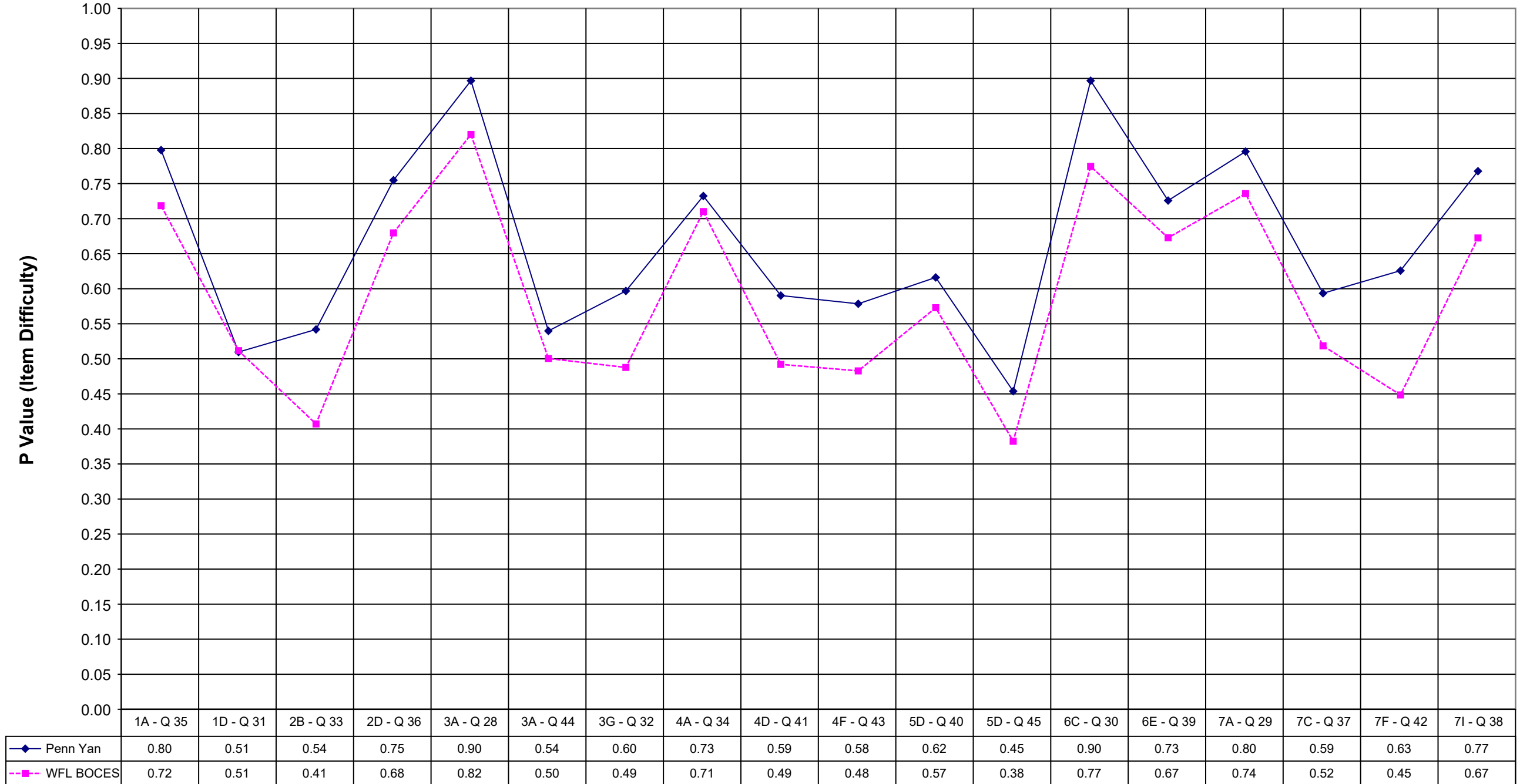


2003 Penn Yan Math 8 Multiple Choice



2003 Penn Yan Math 8 Extended Response



	Penn Yan	WFL BOCES
1A - Q 17	0.87	0.76
1C - Q 11	0.70	0.68
2A - Q 6	0.63	0.60
2B - Q 16	0.59	0.49
2B - Q 9	0.31	0.37
2C - Q 4	0.78	0.67
3A - Q 1	0.87	0.80
3A - Q 13	0.30	0.27
3A - Q 25	0.39	0.42
3A - Q 5	0.81	0.76
3B - Q 3	0.80	0.70
3C - Q 2	0.90	0.88
3G - Q 8	0.72	0.60
4B - Q 23	0.59	0.52
4E - Q 15	0.91	0.87
4H - Q 24	0.73	0.66
5B - Q 7	0.98	0.97
5C - Q 14	0.68	0.64
5C - Q 18	0.71	0.59
5D - Q 27	0.72	0.48
6A - Q 20	0.82	0.75
6C - Q 19	0.77	0.60
7A - Q 12	0.77	0.68
7B - Q 21	0.88	0.84
7C - Q 26	0.52	0.42
7H - Q 10	0.52	0.48
7J - Q 22	0.52	0.45

	Penn Yan	WFL BOCES
1A - Q 35	0.80	0.72
1D - Q 31	0.51	0.51
2B - Q 33	0.54	0.41
2D - Q 36	0.75	0.68
3A - Q 28	0.90	0.82
3A - Q 44	0.54	0.50
3G - Q 32	0.60	0.49
4A - Q 34	0.73	0.71
4D - Q 41	0.59	0.49
4F - Q 43	0.58	0.48
5D - Q 40	0.62	0.57
5D - Q 45	0.45	0.38
6C - Q 30	0.90	0.77
6E - Q 39	0.73	0.67
7A - Q 29	0.80	0.74
7C - Q 37	0.59	0.52
7F - Q 42	0.63	0.45
7I - Q 38	0.77	0.67