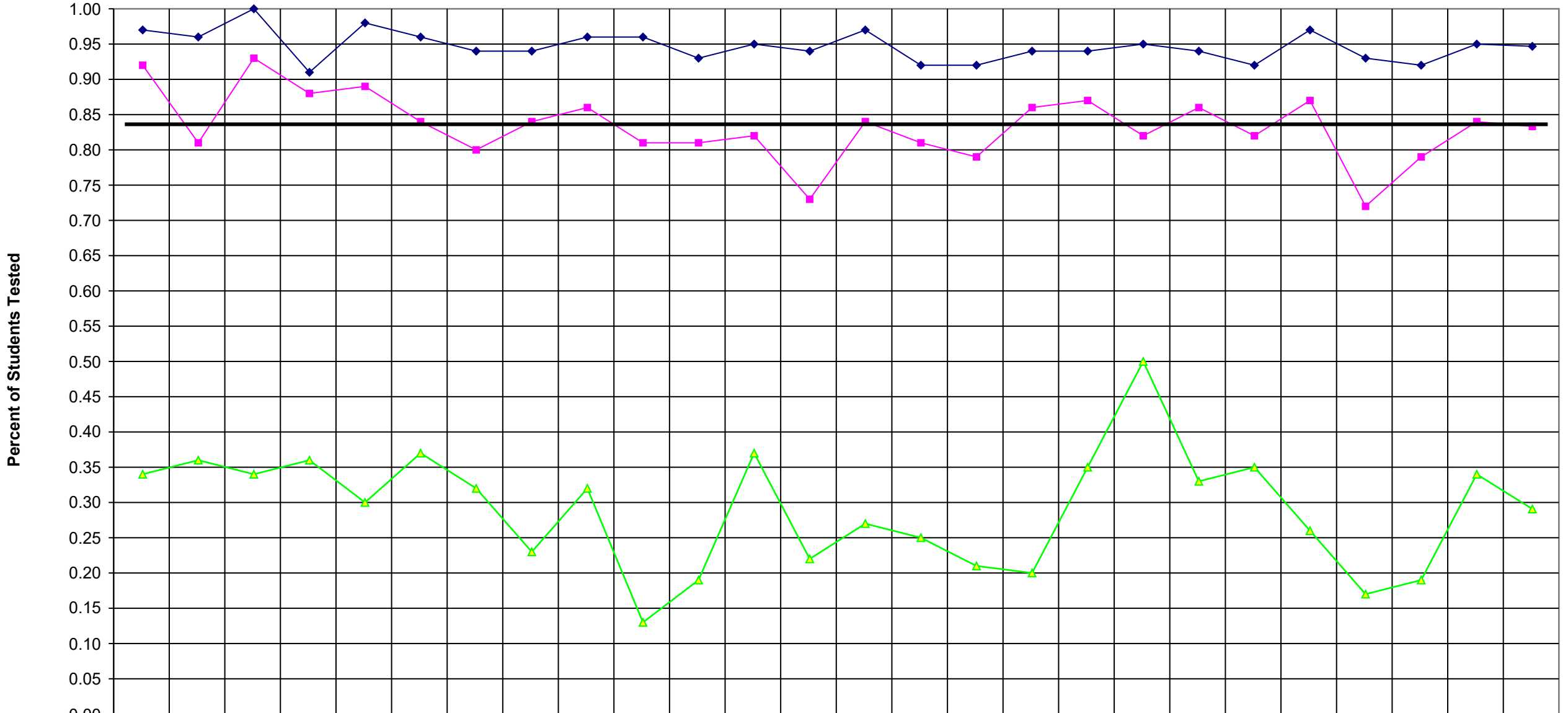


2002 Regents US History & Government



	Canandaigua	Clyde-Savannah	Dundee	East Bloomfield	Gananda	Geneva	Gorham-Middlesex	Honeoye	Lyons	Manchester-Short	Marion	Naples	Newark	North Rose-W	Palmyra-Macedon	Penn Yan	Phelps-Clyfton	Red Creek	Romulus	Seneca Falls	Sodus	Victor	Waterloo	Wayne	Williamson	WFL BOCES
◆ %tested55-100	0.97	0.96	1.00	0.91	0.98	0.96	0.94	0.94	0.96	0.96	0.93	0.95	0.94	0.97	0.92	0.92	0.94	0.94	0.95	0.94	0.92	0.97	0.93	0.92	0.95	0.95
■ %tested65-100	0.92	0.81	0.93	0.88	0.89	0.84	0.80	0.84	0.86	0.81	0.81	0.82	0.73	0.84	0.81	0.79	0.86	0.87	0.82	0.86	0.82	0.87	0.72	0.79	0.84	0.83
▲ %tested85-100	0.34	0.36	0.34	0.36	0.30	0.37	0.32	0.23	0.32	0.13	0.19	0.37	0.22	0.27	0.25	0.21	0.20	0.35	0.50	0.33	0.35	0.26	0.17	0.19	0.34	0.29

	%tested55-100	%tested65-100	%tested85-100
Canandaigua	0.97	0.92	0.34
Clyde-Savannah	0.96	0.81	0.36
Dundee	1.00	0.93	0.34
East Bloomfield	0.91	0.88	0.36
Gananda	0.98	0.89	0.30
Geneva	0.96	0.84	0.37
Gorham-Middlesex	0.94	0.80	0.32
Honeoye	0.94	0.84	0.23
Lyons	0.96	0.86	0.32
Manchester-Shortsville	0.96	0.81	0.13
Marion	0.93	0.81	0.19
Naples	0.95	0.82	0.37
Newark	0.94	0.73	0.22
North Rose-Wolcott	0.97	0.84	0.27
Palmyra-Macedon	0.92	0.81	0.25
Penn Yan	0.92	0.79	0.21
Phelps-Clifton Springs	0.94	0.86	0.20
Red Creek	0.94	0.87	0.35
Romulus	0.95	0.82	0.50
Seneca Falls	0.94	0.86	0.33
Sodus	0.92	0.82	0.35
Victor	0.97	0.87	0.26
Waterloo	0.93	0.72	0.17
Wayne	0.92	0.79	0.19
Williamson	0.95	0.84	0.34
WFL BOCES	0.95	0.83	0.29