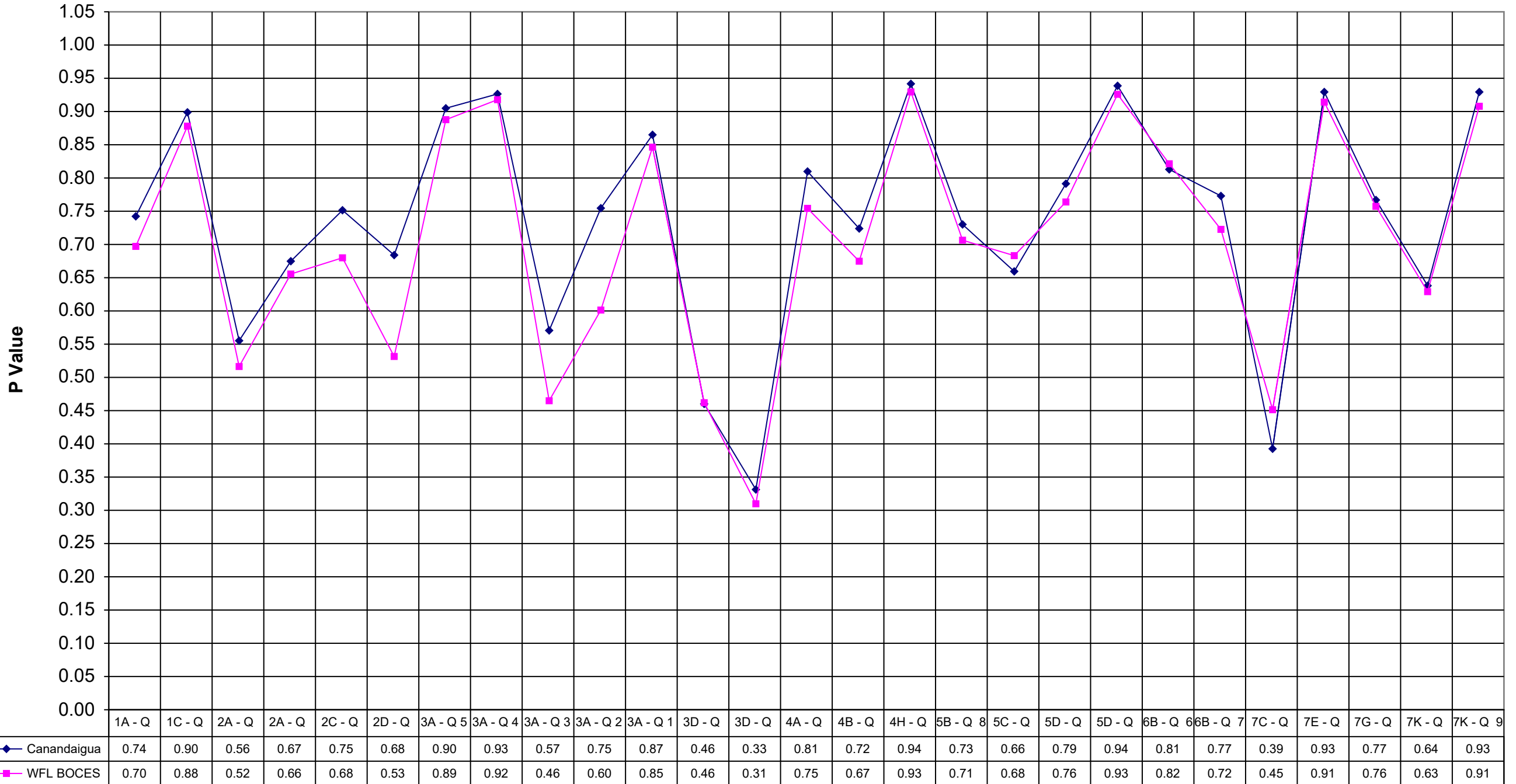
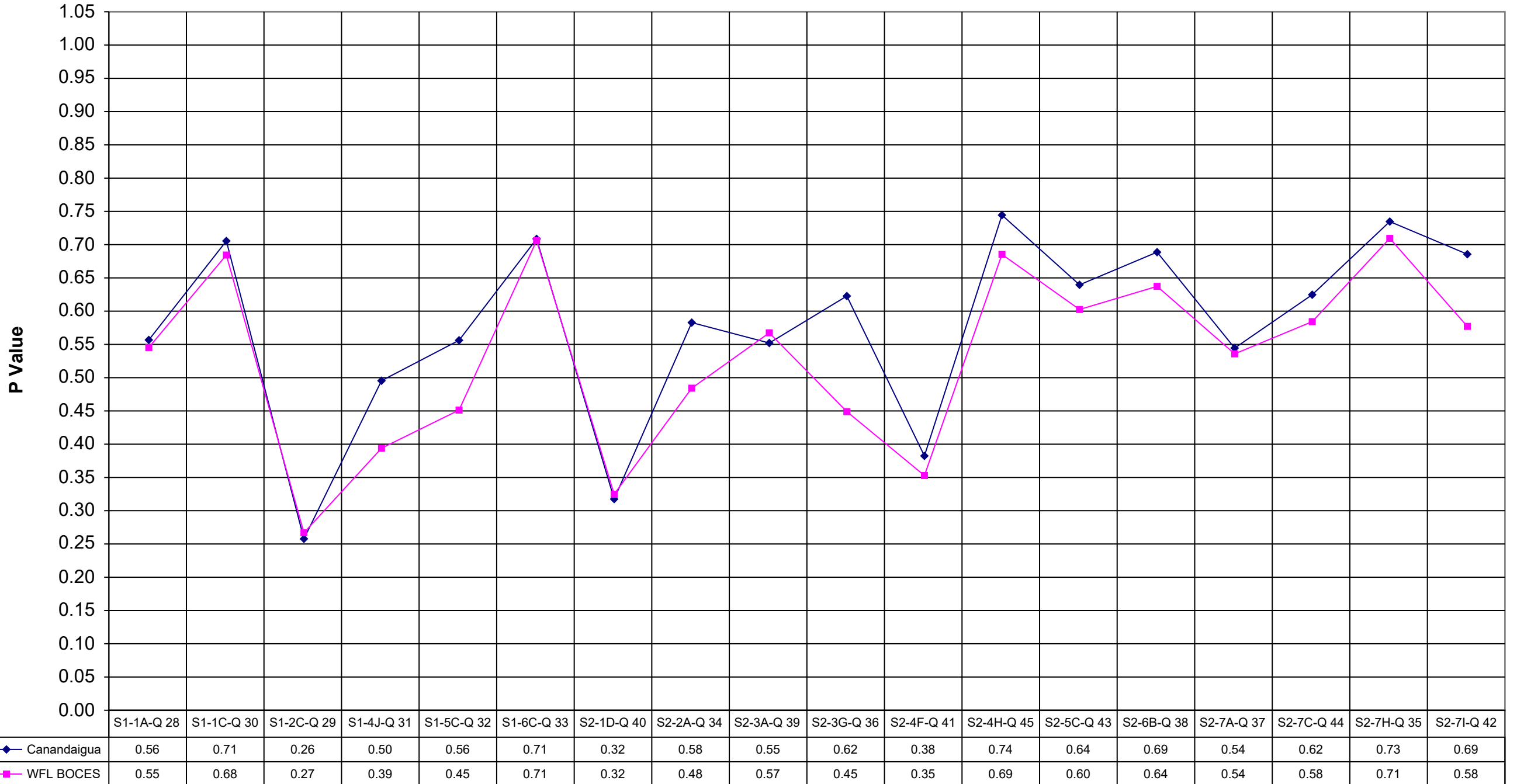


2001 Canandaigua Math 8



2001 Canandaigua Math 8



	Canandaigua	WFL BOCES
1A - Q 21	0.74	0.70
1C - Q 12	0.90	0.88
2A - Q 17	0.56	0.52
2A - Q 22	0.67	0.66
2C - Q 16	0.75	0.68
2D - Q 19	0.68	0.53
3A - Q 5	0.90	0.89
3A - Q 4	0.93	0.92
3A - Q 3	0.57	0.46
3A - Q 2	0.75	0.60
3A - Q 1	0.87	0.85
3D - Q 25	0.46	0.46
3D - Q 26	0.33	0.31
4A - Q 27	0.81	0.75
4B - Q 14	0.72	0.67
4H - Q 20	0.94	0.93
5B - Q 8	0.73	0.71
5C - Q 18	0.66	0.68
5D - Q 13	0.79	0.76
5D - Q 11	0.94	0.93
6B - Q 6	0.81	0.82
6B - Q 7	0.77	0.72
7C - Q 24	0.39	0.45
7E - Q 15	0.93	0.91
7G - Q 10	0.77	0.76
7K - Q 23	0.64	0.63
7K - Q 9	0.93	0.91

	Canandaigua	WFL BOCES
S1-1A-Q 28	0.56	0.55
S1-1C-Q 30	0.71	0.68
S1-2C-Q 29	0.26	0.27
S1-4J-Q 31	0.50	0.39
S1-5C-Q 32	0.56	0.45
S1-6C-Q 33	0.71	0.71
S2-1D-Q 40	0.32	0.32
S2-2A-Q 34	0.58	0.48
S2-3A-Q 39	0.55	0.57
S2-3G-Q 36	0.62	0.45
S2-4F-Q 41	0.38	0.35
S2-4H-Q 45	0.74	0.69
S2-5C-Q 43	0.64	0.60
S2-6B-Q 38	0.69	0.64
S2-7A-Q 37	0.54	0.54
S2-7C-Q 44	0.62	0.58
S2-7H-Q 35	0.73	0.71
S2-7I-Q 42	0.69	0.58