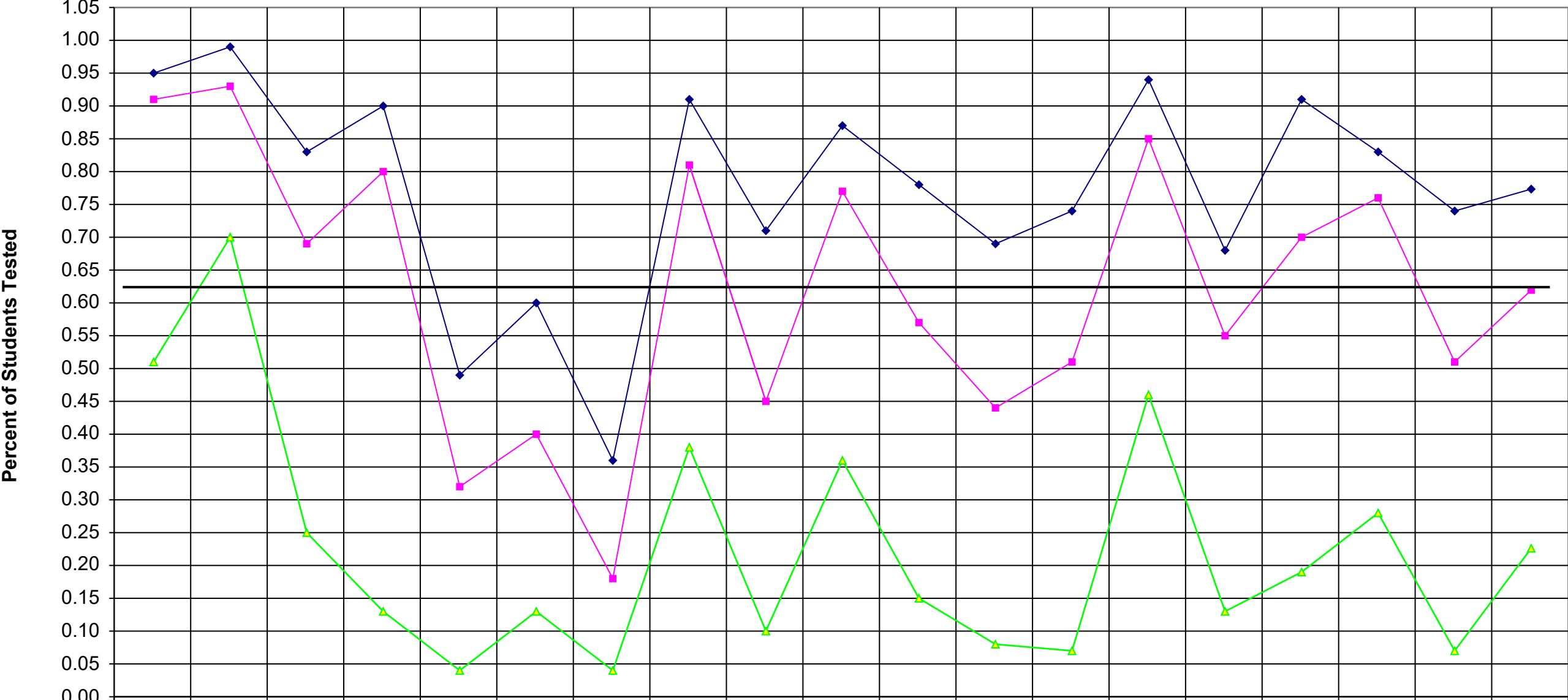


2001 Regents Sequential Math 1



	Geneva	Gorham-Middlesex	Manchester-Shortsville	Naples	Phelps-Clifton Springs	Newark	Clyde-Savannah	Lyons	Marion	Wayne	Sodus	Williamson	North Rose-Wolcott	Red Creek	Penn Yan	Dundee	Seneca Falls	Waterloo	WFL BOCES
◆ %tested55-100	0.95	0.99	0.83	0.90	0.49	0.60	0.36	0.91	0.71	0.87	0.78	0.69	0.74	0.94	0.68	0.91	0.83	0.74	0.77
■ %tested65-100	0.91	0.93	0.69	0.80	0.32	0.40	0.18	0.81	0.45	0.77	0.57	0.44	0.51	0.85	0.55	0.70	0.76	0.51	0.62
▲ %tested85-100	0.51	0.70	0.25	0.13	0.04	0.13	0.04	0.38	0.10	0.36	0.15	0.08	0.07	0.46	0.13	0.19	0.28	0.07	0.23

	%tested55-100	%tested65-100	%tested85-100
Geneva	0.95	0.91	0.51
Gorham-Middlesex	0.99	0.93	0.70
Manchester-Shortsville	0.83	0.69	0.25
Naples	0.90	0.80	0.13
Phelps-Clifton Springs	0.49	0.32	0.04
Newark	0.60	0.40	0.13
Clyde-Savannah	0.36	0.18	0.04
Lyons	0.91	0.81	0.38
Marion	0.71	0.45	0.10
Wayne	0.87	0.77	0.36
Sodus	0.78	0.57	0.15
Williamson	0.69	0.44	0.08
North Rose-Wolcott	0.74	0.51	0.07
Red Creek	0.94	0.85	0.46
Penn Yan	0.68	0.55	0.13
Dundee	0.91	0.70	0.19
Seneca Falls	0.83	0.76	0.28
Waterloo	0.74	0.51	0.07
WFL BOCES	0.77	0.62	0.23