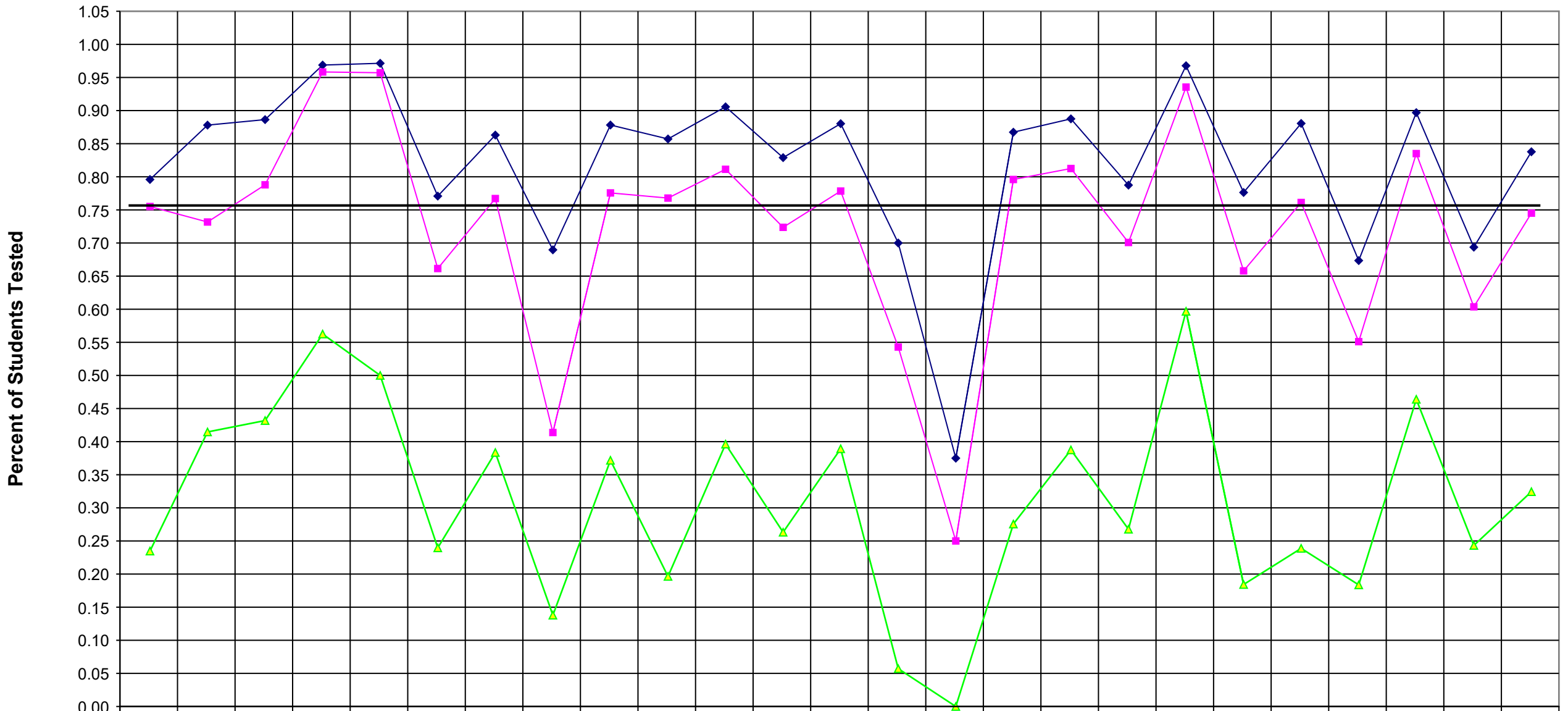


2001 Regents Sequential Math 2



	Canandaigua	Bloomfield	Geneva	Gorham-Middlesex	Naples	Phelps-Cattaraugus	Honeoye Falls	Victor	Newark	Clyde-Savannah	Lyons	Marion	Wayne	Palmyra-Macedon	Gananda	Sodus	Williamson	North Rose-Wadsworth	Red Creek	Penn Yan	Dundee	Romulus	Seneca Falls	Waterloo	WFL BOCES
◆ %tested55-100	0.80	0.88	0.89	0.97	0.97	0.77	0.86	0.69	0.88	0.86	0.91	0.83	0.88	0.70	0.38	0.87	0.89	0.79	0.97	0.78	0.88	0.67	0.90	0.69	0.84
■ %tested65-100	0.76	0.73	0.79	0.96	0.96	0.66	0.77	0.41	0.78	0.77	0.81	0.72	0.78	0.54	0.25	0.80	0.81	0.70	0.94	0.66	0.76	0.55	0.84	0.60	0.75
▲ %tested85-100	0.23	0.41	0.43	0.56	0.50	0.24	0.38	0.14	0.37	0.20	0.40	0.26	0.39	0.06	0.00	0.28	0.39	0.27	0.60	0.18	0.24	0.18	0.46	0.24	0.32

	%tested5 5-100	%tested6 5-100	%tested8 5-100
Canandaigua	0.80	0.76	0.23
Bloomfield	0.88	0.73	0.41
Geneva	0.89	0.79	0.43
Gorham-Middlesex	0.97	0.96	0.56
Naples	0.97	0.96	0.50
Phelps-Clifton Springs	0.77	0.66	0.24
Honeoye	0.86	0.77	0.38
Victor	0.69	0.41	0.14
Newark	0.88	0.78	0.37
Clyde-Savannah	0.86	0.77	0.20
Lyons	0.91	0.81	0.40
Marion	0.83	0.72	0.26
Wayne	0.88	0.78	0.39
Palmyra-Macedon	0.70	0.54	0.06
Gananda	0.38	0.25	0.00
Sodus	0.87	0.80	0.28
Williamson	0.89	0.81	0.39
North Rose-Wolcott	0.79	0.70	0.27
Red Creek	0.97	0.94	0.60
Penn Yan	0.78	0.66	0.18
Dundee	0.88	0.76	0.24
Romulus	0.67	0.55	0.18
Seneca Falls	0.90	0.84	0.46
Waterloo	0.69	0.60	0.24
WFL BOCES	0.84	0.75	0.32