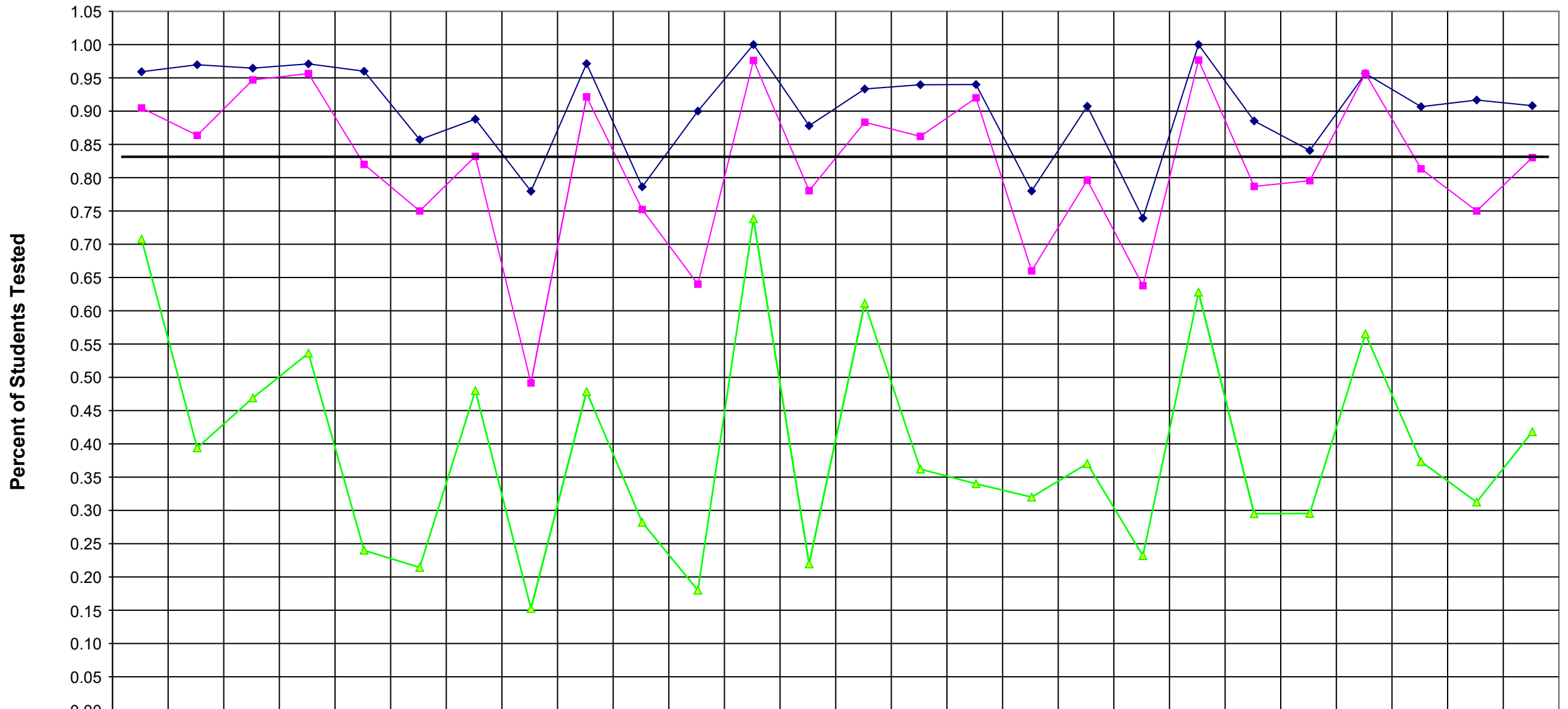


## 2001 Regents Sequential Math 3



	Canandaigua	Bloomfield	Geneva	Gorham-Middlesex	Manchester-Short	Naples	Phelps-Clyfton	Honeoye	Victor	Newark	Clyde-Savannah	Lyons	Marion	Wayne	Palmyra-Macedon	Gananda	Sodus	Williamson	North Rose-W	Red Creek	Penn Yan	Dundee	Romulus	Seneca Falls	Waterloo	WFL BOCES
◆ %tested55-100	0.96	0.97	0.96	0.97	0.96	0.86	0.89	0.78	0.97	0.79	0.90	1.00	0.88	0.93	0.94	0.94	0.78	0.91	0.74	1.00	0.89	0.84	0.96	0.91	0.92	0.91
■ %tested65-100	0.90	0.86	0.95	0.96	0.82	0.75	0.83	0.49	0.92	0.75	0.64	0.98	0.78	0.88	0.86	0.92	0.66	0.80	0.64	0.98	0.79	0.80	0.96	0.81	0.75	0.83
▲ %tested85-100	0.71	0.39	0.47	0.54	0.24	0.21	0.48	0.15	0.48	0.28	0.18	0.74	0.22	0.61	0.36	0.34	0.32	0.37	0.23	0.63	0.30	0.30	0.57	0.37	0.31	0.42

	%tested5 5-100	%tested6 5-100	%tested8 5-100
Canandaigua	0.96	0.90	0.71
Bloomfield	0.97	0.86	0.39
Geneva	0.96	0.95	0.47
Gorham-Middlesex	0.97	0.96	0.54
Manchester-Shortsville	0.96	0.82	0.24
Naples	0.86	0.75	0.21
Phelps-Clifton Springs	0.89	0.83	0.48
Honeoye	0.78	0.49	0.15
Victor	0.97	0.92	0.48
Newark	0.79	0.75	0.28
Clyde-Savannah	0.90	0.64	0.18
Lyons	1.00	0.98	0.74
Marion	0.88	0.78	0.22
Wayne	0.93	0.88	0.61
Palmyra-Macedon	0.94	0.86	0.36
Gananda	0.94	0.92	0.34
Sodus	0.78	0.66	0.32
Williamson	0.91	0.80	0.37
North Rose-Wolcott	0.74	0.64	0.23
Red Creek	1.00	0.98	0.63
Penn Yan	0.89	0.79	0.30
Dundee	0.84	0.80	0.30
Romulus	0.96	0.96	0.57
Seneca Falls	0.91	0.81	0.37
Waterloo	0.92	0.75	0.31
WFL BOCES	0.91	0.83	0.42