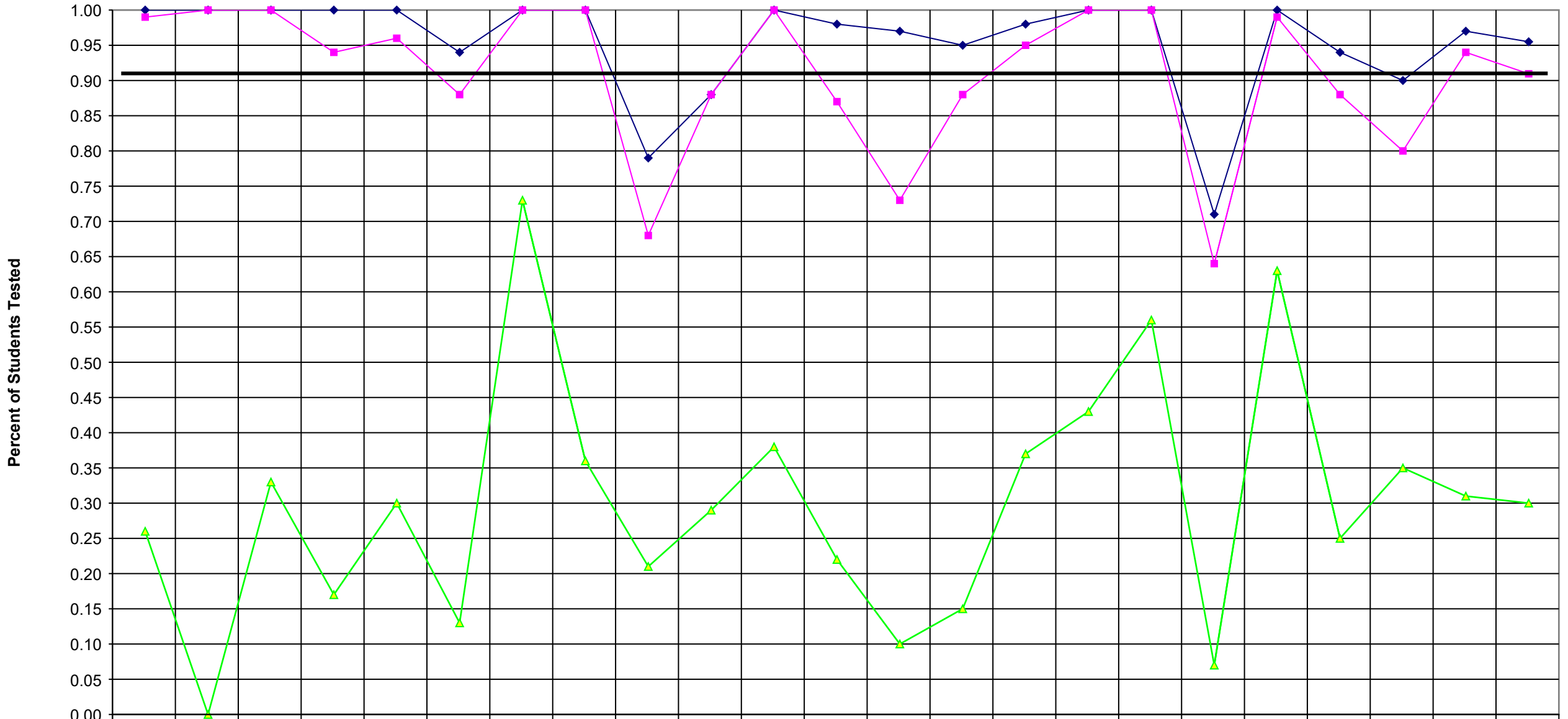


## 2002 Regents French



<span style="color: blue;">◆</span> %tested55-100	1.00	1.00	1.00	1.00	1.00	0.94	1.00	1.00	0.79	0.88	1.00	0.98	0.97	0.95	0.98	1.00	1.00	0.71	1.00	0.94	0.90	0.97	0.96
<span style="color: magenta;">■</span> %tested65-100	0.99	1.00	1.00	0.94	0.96	0.88	1.00	1.00	0.68	0.88	1.00	0.87	0.73	0.88	0.95	1.00	1.00	0.64	0.99	0.88	0.80	0.94	0.91
<span style="color: green;">▲</span> %tested85-100	0.26	0.00	0.33	0.17	0.30	0.13	0.73	0.36	0.21	0.29	0.38	0.22	0.10	0.15	0.37	0.43	0.56	0.07	0.63	0.25	0.35	0.31	0.30

	<b>%tested55-100</b>	<b>%tested65-100</b>	<b>%tested85-100</b>
Canandaigua	1.00	0.99	0.26
Dundee	1.00	1.00	0.00
East Bloomfield	1.00	1.00	0.33
Gananda	1.00	0.94	0.17
Geneva	1.00	0.96	0.30
Gorham-Middlesex	0.94	0.88	0.13
Honeoye	1.00	1.00	0.73
Lyons	1.00	1.00	0.36
Manchester-Shortsville	0.79	0.68	0.21
Marion	0.88	0.88	0.29
Naples	1.00	1.00	0.38
Newark	0.98	0.87	0.22
Palmyra-Macedon	0.97	0.73	0.10
Penn Yan	0.95	0.88	0.15
Phelps-Clifton Springs	0.98	0.95	0.37
Red Creek	1.00	1.00	0.43
Seneca Falls	1.00	1.00	0.56
Sodus	0.71	0.64	0.07
Victor	1.00	0.99	0.63
Waterloo	0.94	0.88	0.25
Wayne	0.90	0.80	0.35
Williamson	0.97	0.94	0.31
WFL BOCES	0.96	0.91	0.30