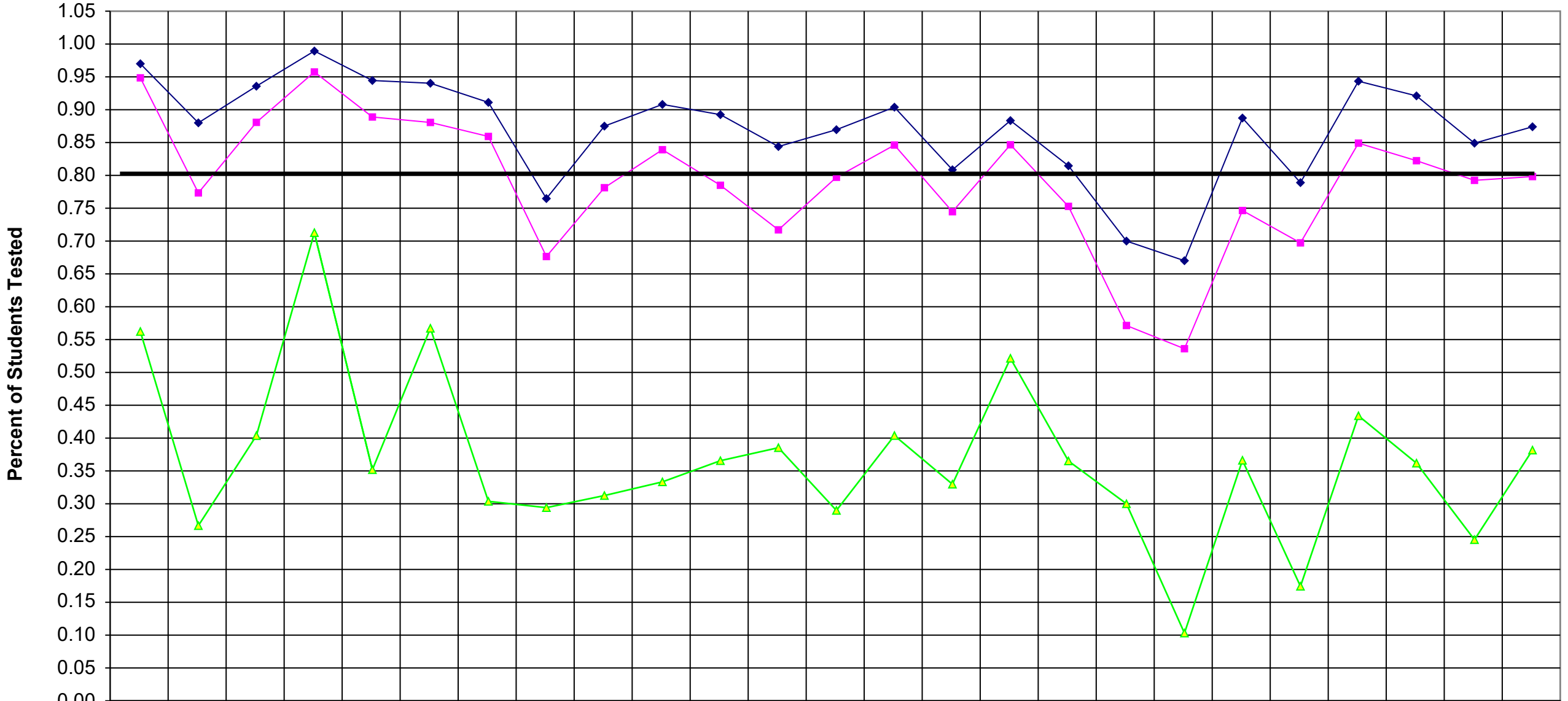


1999 Regents Seq Math 2



	Canandaigua	East Bloomfield	Geneva	Gorham-Middlesex	Manchester-Shorts	Naples	Phelps-Clyfton	Honeoye	Romulus	Seneca Falls	Waterloo	Newark	Clyde-Savannah	Lyons	Marion	Wayne	Palmyra-Macedon	Gananda	Sodus	Williamson	North Rose-Wol	Red Creek	Penn Yan	Dundee	WFL BOCES
◆ %Tested 55-100	0.97	0.88	0.94	0.99	0.94	0.94	0.91	0.76	0.88	0.91	0.89	0.84	0.87	0.90	0.81	0.88	0.81	0.70	0.67	0.89	0.79	0.94	0.92	0.85	0.87
■ %Tested 65-100	0.95	0.77	0.88	0.96	0.89	0.88	0.86	0.68	0.78	0.84	0.78	0.72	0.80	0.85	0.74	0.85	0.75	0.57	0.54	0.75	0.70	0.85	0.82	0.79	0.80
▲ %Tested 85-100	0.56	0.27	0.40	0.71	0.35	0.57	0.30	0.29	0.31	0.33	0.37	0.39	0.29	0.40	0.33	0.52	0.37	0.30	0.10	0.37	0.17	0.43	0.36	0.25	0.38

District	%Tested 55-100	%Tested 65-100	%Tested 85-100	Tested	55-100	65-100
Canandaigua	0.97	0.95	0.56	233	226	221
East Bloomfield	0.88	0.77	0.27	75	66	58
Geneva	0.94	0.88	0.40	109	102	96
Gorham-Middlesex	0.99	0.96	0.71	94	93	90
Manchester-Shortsville	0.94	0.89	0.35	54	51	48
Naples	0.94	0.88	0.57	67	63	59
Phelps-Clifton Springs	0.91	0.86	0.30	135	123	116
Honeoye	0.76	0.68	0.29	68	52	46
Romulus	0.88	0.78	0.31	32	28	25
Seneca Falls	0.91	0.84	0.33	87	79	73
Waterloo	0.89	0.78	0.37	93	83	73
Newark	0.84	0.72	0.39	205	173	147
Clyde-Savannah	0.87	0.80	0.29	69	60	55
Lyons	0.90	0.85	0.40	52	47	44
Marion	0.81	0.74	0.33	94	76	70
Wayne	0.88	0.85	0.52	163	144	138
Palmyra-Macedon	0.81	0.75	0.37	178	145	134
Gananda	0.70	0.57	0.30	70	49	40
Sodus	0.67	0.54	0.10	97	65	52
Williamson	0.89	0.75	0.37	71	63	53
North Rose-Wolcott	0.79	0.70	0.17	109	86	76
Red Creek	0.94	0.85	0.43	53	50	45
Penn Yan	0.92	0.82	0.36	152	140	125
Dundee	0.85	0.79	0.25	53	45	42
WFL BOCES	0.87	0.80	0.38	2413	2109	1926

85-100
131
20
44
67
19
38
41
20
10
29
34
79
20
21
31
85
65
21
10
26
19
23
55
13
921