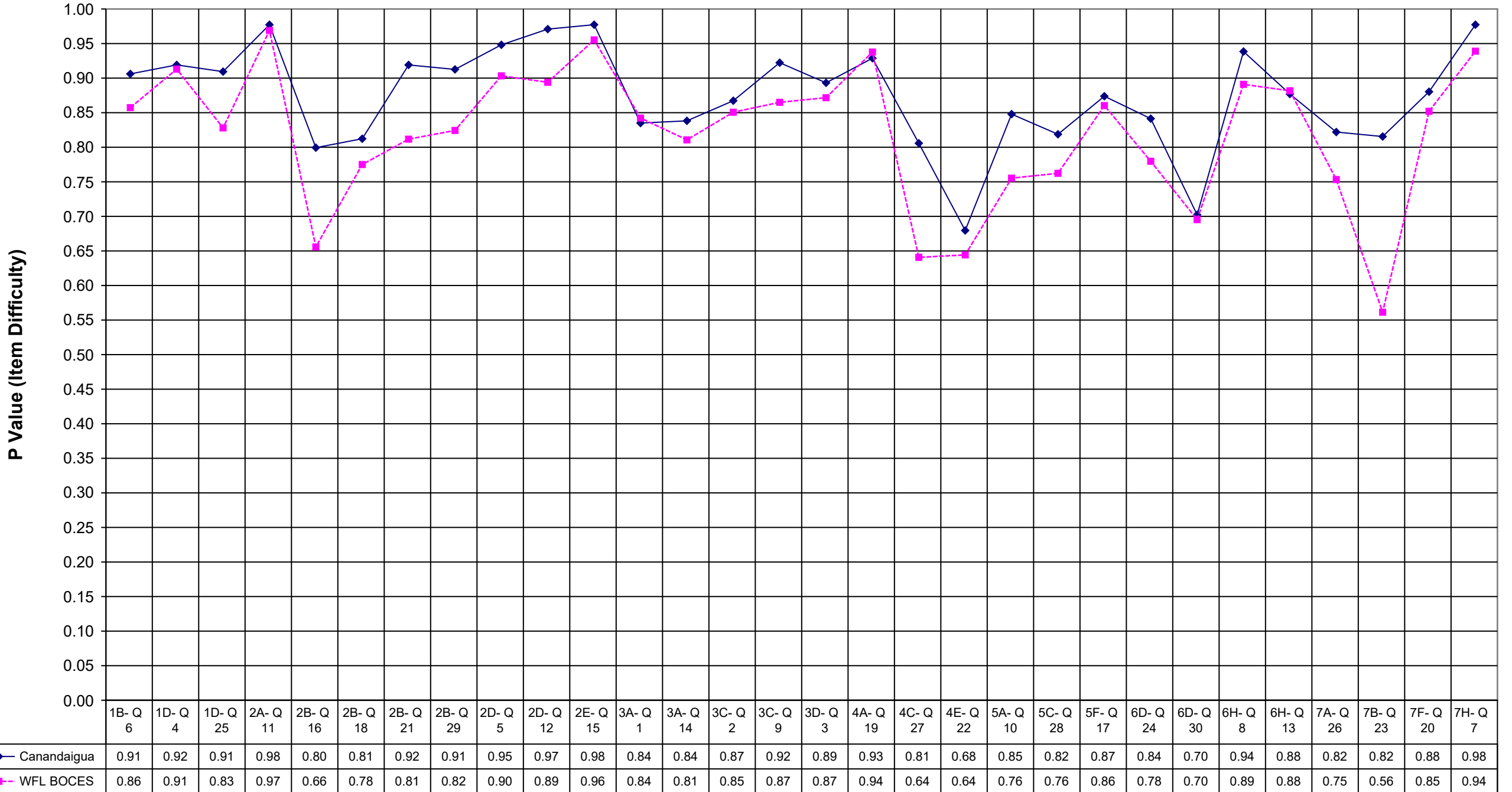
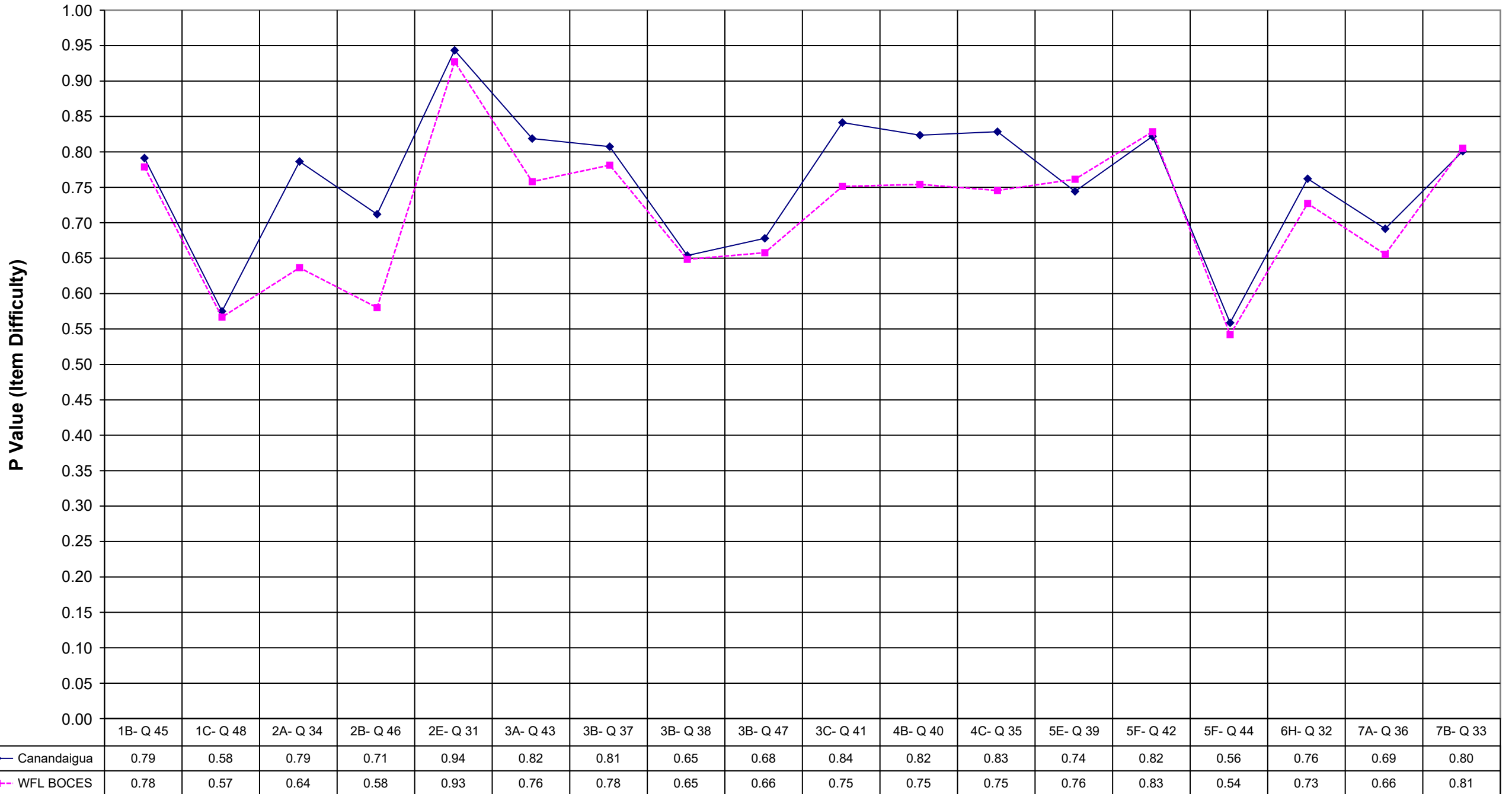


## 2005 Canandaigua Math 4 Multiple Choice



## 2005 Canandaigua Math 4 Extended Response



Canandaigi WFL BOCES

1B- Q 6	0.91	0.86
1D- Q 4	0.92	0.91
1D- Q 25	0.91	0.83
2A- Q 11	0.98	0.97
2B- Q 16	0.80	0.66
2B- Q 18	0.81	0.78
2B- Q 21	0.92	0.81
2B- Q 29	0.91	0.82
2D- Q 5	0.95	0.90
2D- Q 12	0.97	0.89
2E- Q 15	0.98	0.96
3A- Q 1	0.84	0.84
3A- Q 14	0.84	0.81
3C- Q 2	0.87	0.85
3C- Q 9	0.92	0.87
3D- Q 3	0.89	0.87
4A- Q 19	0.93	0.94
4C- Q 27	0.81	0.64
4E- Q 22	0.68	0.64
5A- Q 10	0.85	0.76
5C- Q 28	0.82	0.76
5F- Q 17	0.87	0.86
6D- Q 24	0.84	0.78
6D- Q 30	0.70	0.70
6H- Q 8	0.94	0.89
6H- Q 13	0.88	0.88
7A- Q 26	0.82	0.75
7B- Q 23	0.82	0.56
7F- Q 20	0.88	0.85
7H- Q 7	0.98	0.94

Canandaigi WFL BOCES

1B- Q 45	0.79	0.78
1C- Q 48	0.58	0.57
2A- Q 34	0.79	0.64
2B- Q 46	0.71	0.58
2E- Q 31	0.94	0.93
3A- Q 43	0.82	0.76
3B- Q 37	0.81	0.78
3B- Q 38	0.65	0.65
3B- Q 47	0.68	0.66
3C- Q 41	0.84	0.75
4B- Q 40	0.82	0.75
4C- Q 35	0.83	0.75
5E- Q 39	0.74	0.76
5F- Q 42	0.82	0.83
5F- Q 44	0.56	0.54
6H- Q 32	0.76	0.73
7A- Q 36	0.69	0.66
7B- Q 33	0.80	0.81