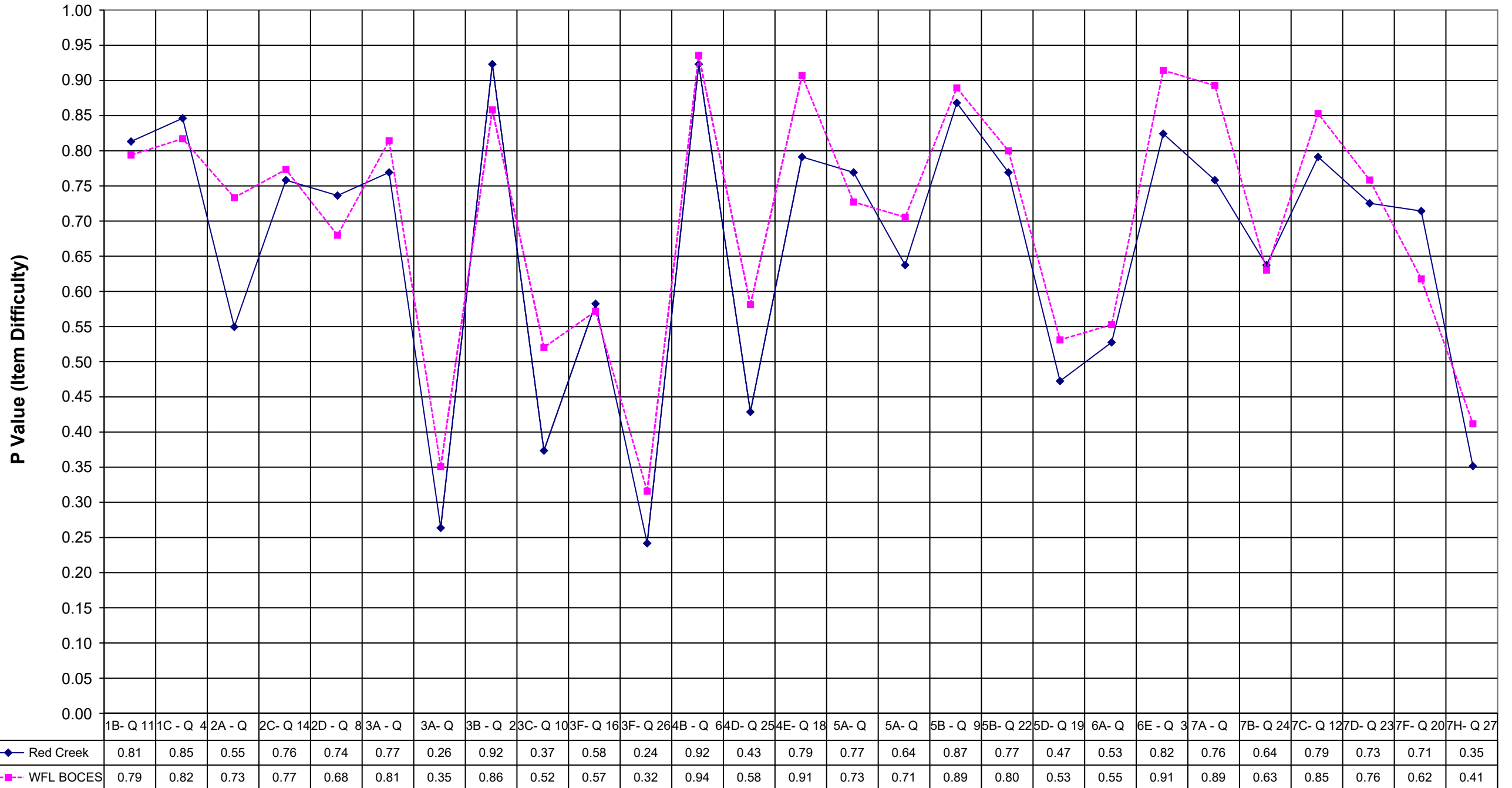
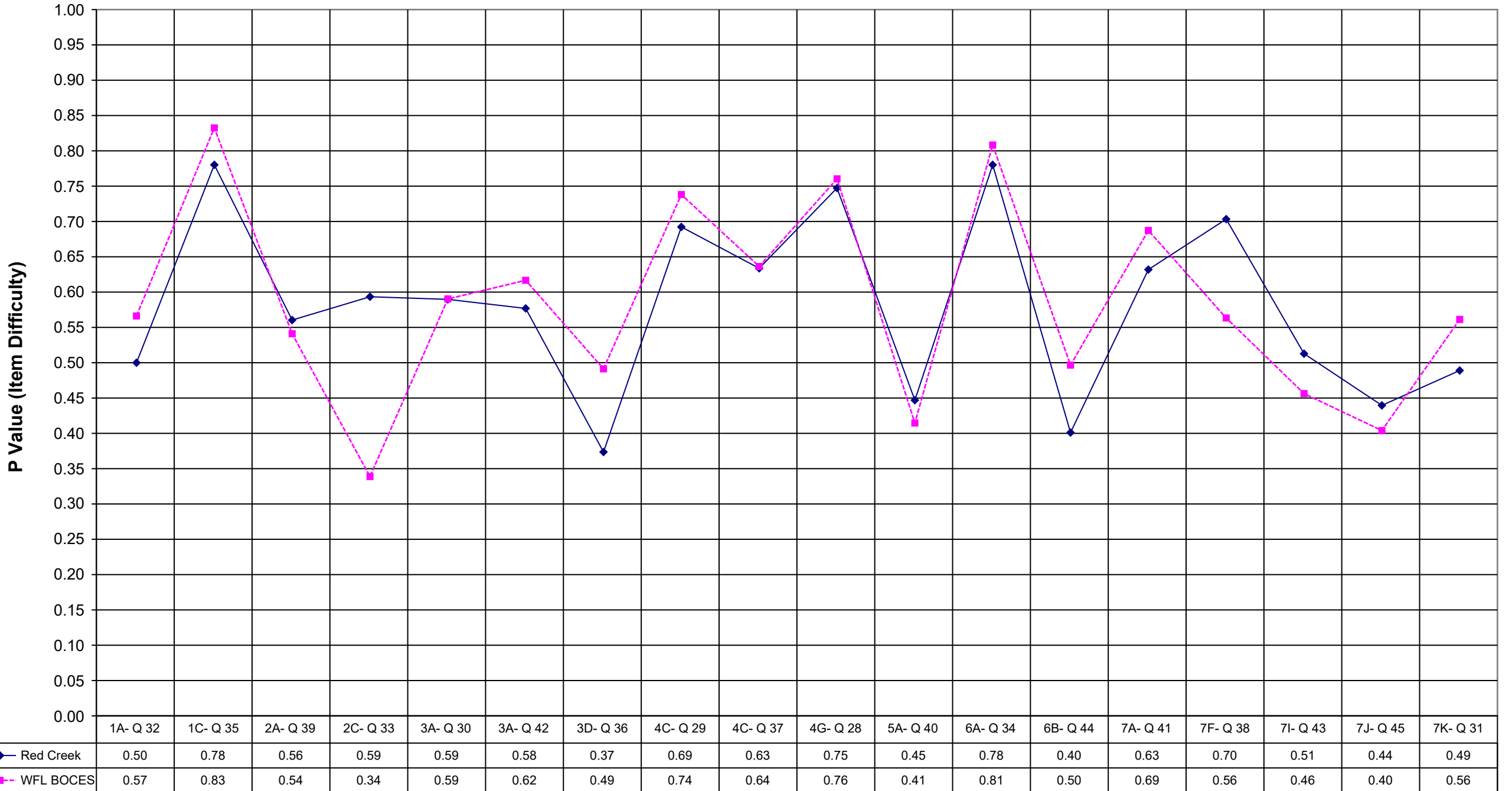


2005 Red Creek Math 8 Multiple Choice



2005 Red Creek Math 8 Extended Response



Red Creek WFL BOCES

1B- Q 11	0.81	0.79
1C - Q 4	0.85	0.82
2A - Q 5	0.55	0.73
2C- Q 14	0.76	0.77
2D - Q 8	0.74	0.68
3A - Q 7	0.77	0.81
3A- Q 17	0.26	0.35
3B - Q 2	0.92	0.86
3C- Q 10	0.37	0.52
3F- Q 16	0.58	0.57
3F- Q 26	0.24	0.32
4B - Q 6	0.92	0.94
4D- Q 25	0.43	0.58
4E- Q 18	0.79	0.91
5A- Q 13	0.77	0.73
5A- Q 21	0.64	0.71
5B - Q 9	0.87	0.89
5B- Q 22	0.77	0.80
5D- Q 19	0.47	0.53
6A- Q 15	0.53	0.55
6E - Q 3	0.82	0.91
7A - Q 1	0.76	0.89
7B- Q 24	0.64	0.63
7C- Q 12	0.79	0.85
7D- Q 23	0.73	0.76
7F- Q 20	0.71	0.62
7H- Q 27	0.35	0.41

Red Creek WFL BOCES

1A- Q 32	0.50	0.57
1C- Q 35	0.78	0.83
2A- Q 39	0.56	0.54
2C- Q 33	0.59	0.34
3A- Q 30	0.59	0.59
3A- Q 42	0.58	0.62
3D- Q 36	0.37	0.49
4C- Q 29	0.69	0.74
4C- Q 37	0.63	0.64
4G- Q 28	0.75	0.76
5A- Q 40	0.45	0.41
6A- Q 34	0.78	0.81
6B- Q 44	0.40	0.50
7A- Q 41	0.63	0.69
7F- Q 38	0.70	0.56
7I- Q 43	0.51	0.46
7J- Q 45	0.44	0.40
7K- Q 31	0.49	0.56