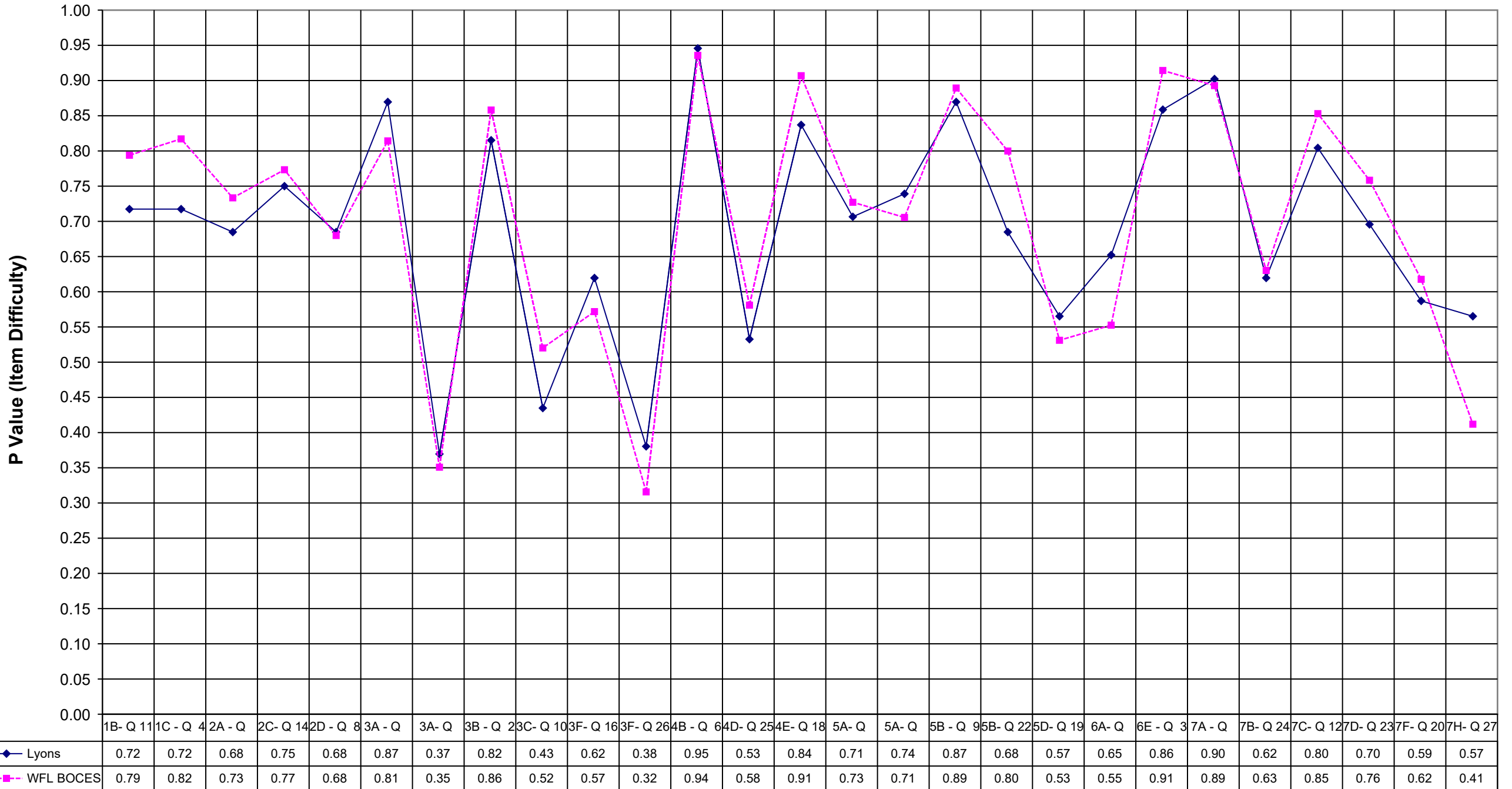
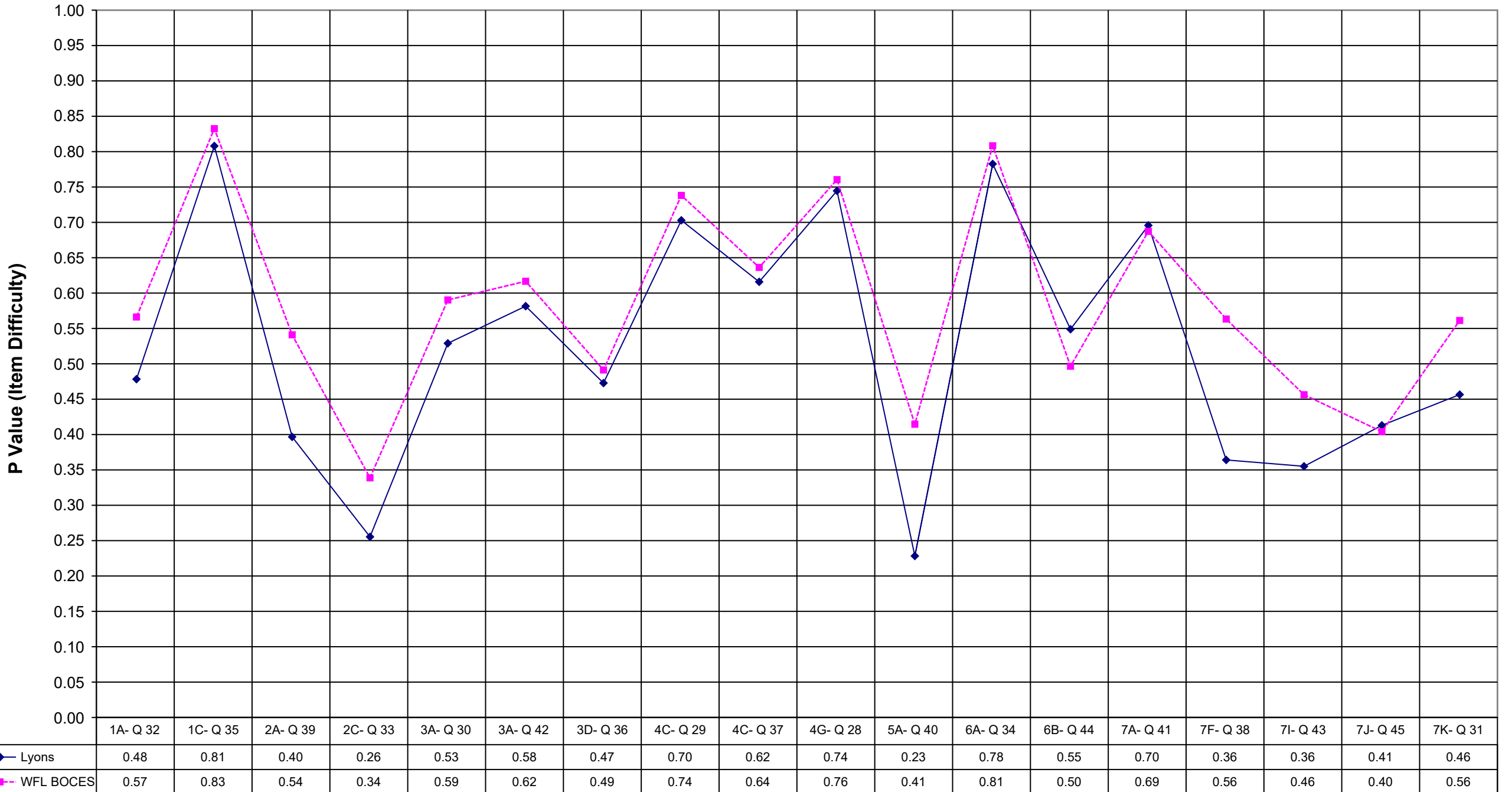


## 2005 Lyons Math 8 Multiple Choice



## 2005 Lyons Math 8 Extended Response



	Lyons	WFL BOCES
1B- Q 11	0.72	0.79
1C - Q 4	0.72	0.82
2A - Q 5	0.68	0.73
2C- Q 14	0.75	0.77
2D - Q 8	0.68	0.68
3A - Q 7	0.87	0.81
3A- Q 17	0.37	0.35
3B - Q 2	0.82	0.86
3C- Q 10	0.43	0.52
3F- Q 16	0.62	0.57
3F- Q 26	0.38	0.32
4B - Q 6	0.95	0.94
4D- Q 25	0.53	0.58
4E- Q 18	0.84	0.91
5A- Q 13	0.71	0.73
5A- Q 21	0.74	0.71
5B - Q 9	0.87	0.89
5B- Q 22	0.68	0.80
5D- Q 19	0.57	0.53
6A- Q 15	0.65	0.55
6E - Q 3	0.86	0.91
7A - Q 1	0.90	0.89
7B- Q 24	0.62	0.63
7C- Q 12	0.80	0.85
7D- Q 23	0.70	0.76
7F- Q 20	0.59	0.62
7H- Q 27	0.57	0.41

	Lyons	WFL BOCES
1A- Q 32	0.48	0.57
1C- Q 35	0.81	0.83
2A- Q 39	0.40	0.54
2C- Q 33	0.26	0.34
3A- Q 30	0.53	0.59
3A- Q 42	0.58	0.62
3D- Q 36	0.47	0.49
4C- Q 29	0.70	0.74
4C- Q 37	0.62	0.64
4G- Q 28	0.74	0.76
5A- Q 40	0.23	0.41
6A- Q 34	0.78	0.81
6B- Q 44	0.55	0.50
7A- Q 41	0.70	0.69
7F- Q 38	0.36	0.56
7I- Q 43	0.36	0.46
7J- Q 45	0.41	0.40
7K- Q 31	0.46	0.56