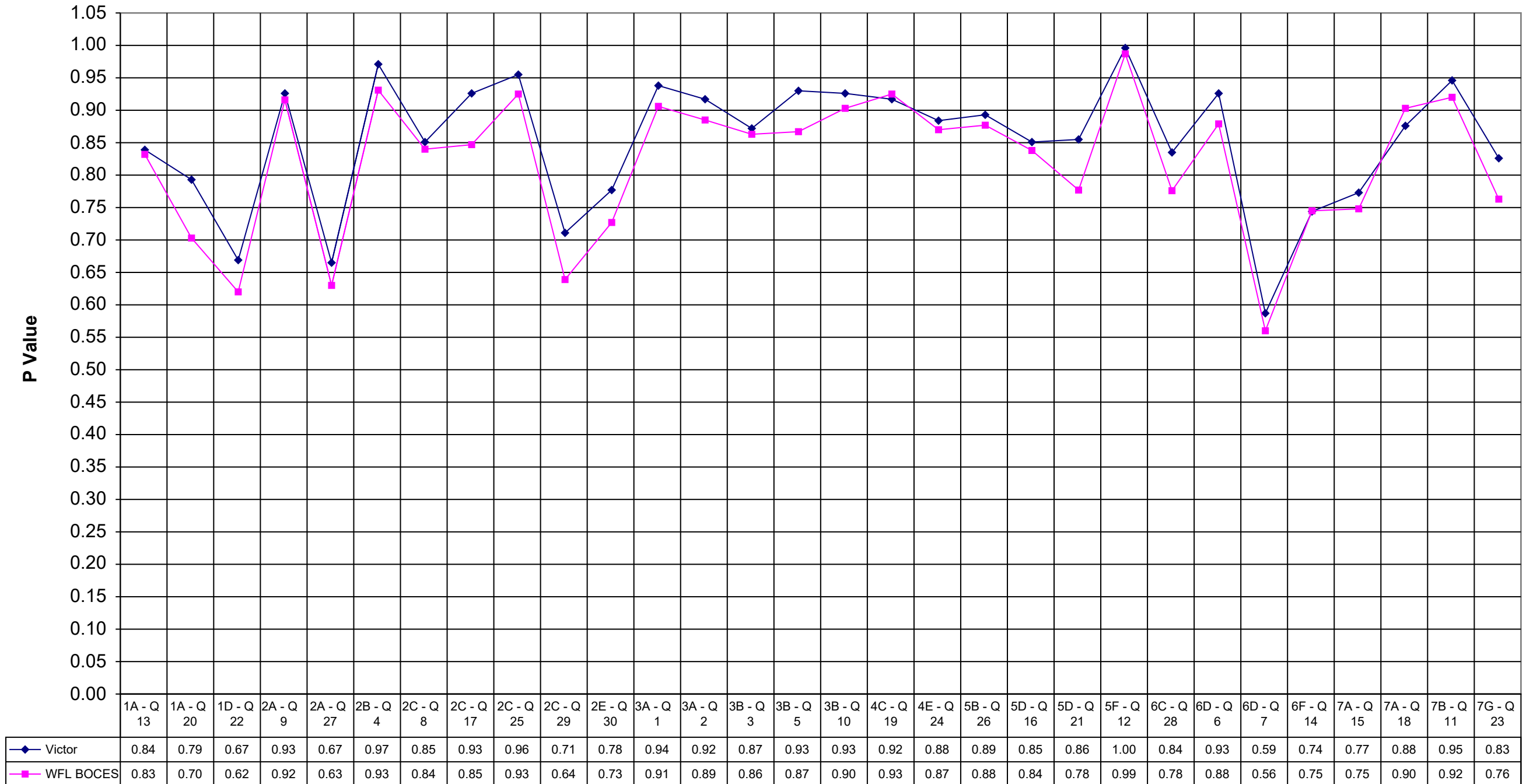
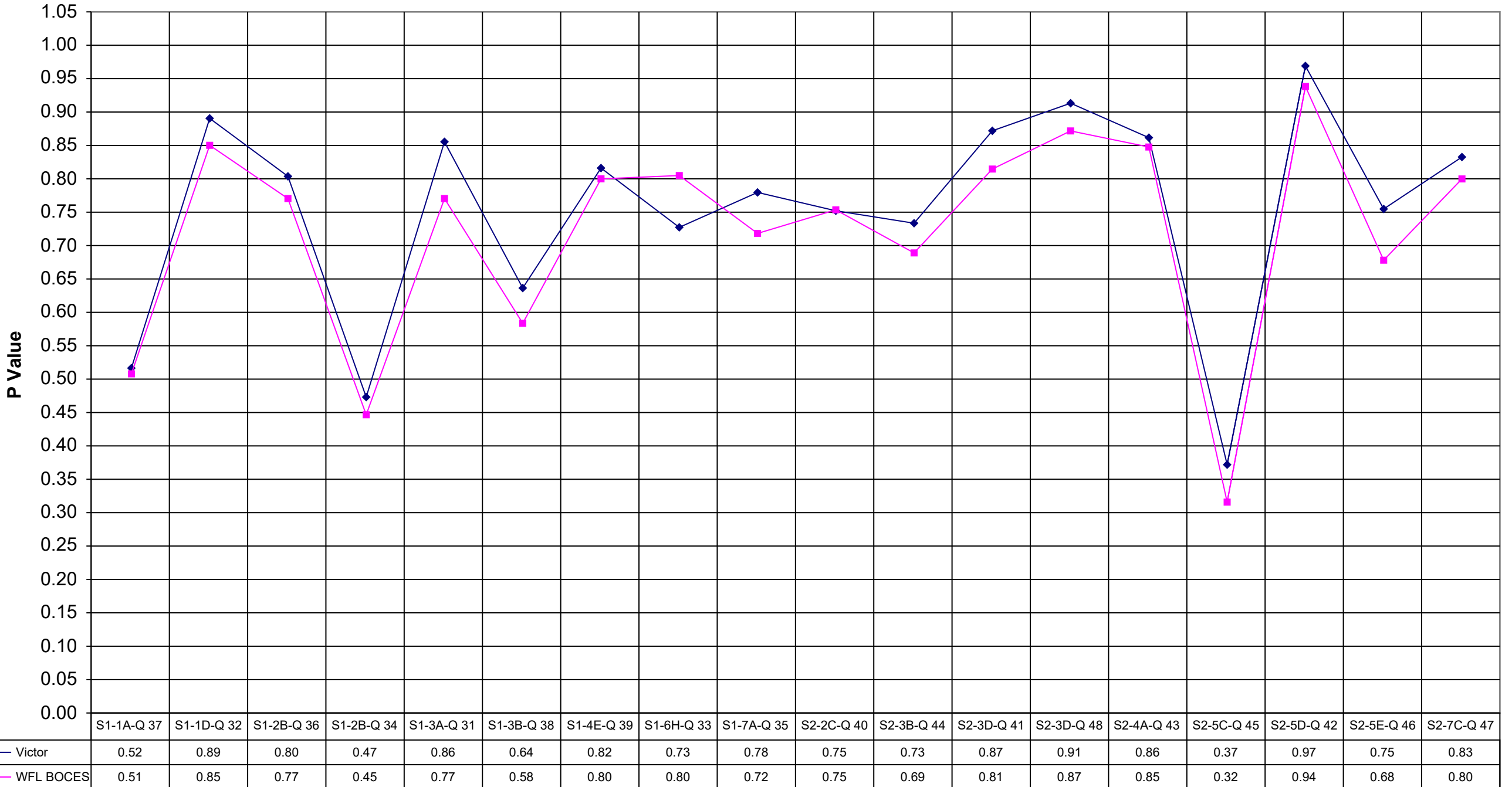


## 2001 Victor Math 4



## 2001 Victor Math 4



|           | Victor | WFL BOCES |
|-----------|--------|-----------|
| 1A - Q 13 | 0.84   | 0.83      |
| 1A - Q 20 | 0.79   | 0.70      |
| 1D - Q 22 | 0.67   | 0.62      |
| 2A - Q 9  | 0.93   | 0.92      |
| 2A - Q 27 | 0.67   | 0.63      |
| 2B - Q 4  | 0.97   | 0.93      |
| 2C - Q 8  | 0.85   | 0.84      |
| 2C - Q 17 | 0.93   | 0.85      |
| 2C - Q 25 | 0.96   | 0.93      |
| 2C - Q 29 | 0.71   | 0.64      |
| 2E - Q 30 | 0.78   | 0.73      |
| 3A - Q 1  | 0.94   | 0.91      |
| 3A - Q 2  | 0.92   | 0.89      |
| 3B - Q 3  | 0.87   | 0.86      |
| 3B - Q 5  | 0.93   | 0.87      |
| 3B - Q 10 | 0.93   | 0.90      |
| 4C - Q 19 | 0.92   | 0.93      |
| 4E - Q 24 | 0.88   | 0.87      |
| 5B - Q 26 | 0.89   | 0.88      |
| 5D - Q 16 | 0.85   | 0.84      |
| 5D - Q 21 | 0.86   | 0.78      |
| 5F - Q 12 | 1.00   | 0.99      |
| 6C - Q 28 | 0.84   | 0.78      |
| 6D - Q 6  | 0.93   | 0.88      |
| 6D - Q 7  | 0.59   | 0.56      |
| 6F - Q 14 | 0.74   | 0.75      |
| 7A - Q 15 | 0.77   | 0.75      |
| 7A - Q 18 | 0.88   | 0.90      |
| 7B - Q 11 | 0.95   | 0.92      |
| 7G - Q 23 | 0.83   | 0.76      |

|            | Victor | WFL BOCES |
|------------|--------|-----------|
| S1-1A-Q 37 | 0.52   | 0.51      |
| S1-1D-Q 32 | 0.89   | 0.85      |
| S1-2B-Q 36 | 0.80   | 0.77      |
| S1-2B-Q 34 | 0.47   | 0.45      |
| S1-3A-Q 31 | 0.86   | 0.77      |
| S1-3B-Q 38 | 0.64   | 0.58      |
| S1-4E-Q 39 | 0.82   | 0.80      |
| S1-6H-Q 33 | 0.73   | 0.80      |
| S1-7A-Q 35 | 0.78   | 0.72      |
| S2-2C-Q 40 | 0.75   | 0.75      |
| S2-3B-Q 44 | 0.73   | 0.69      |
| S2-3D-Q 41 | 0.87   | 0.81      |
| S2-3D-Q 48 | 0.91   | 0.87      |
| S2-4A-Q 43 | 0.86   | 0.85      |
| S2-5C-Q 45 | 0.37   | 0.32      |
| S2-5D-Q 42 | 0.97   | 0.94      |
| S2-5E-Q 46 | 0.75   | 0.68      |
| S2-7C-Q 47 | 0.83   | 0.80      |