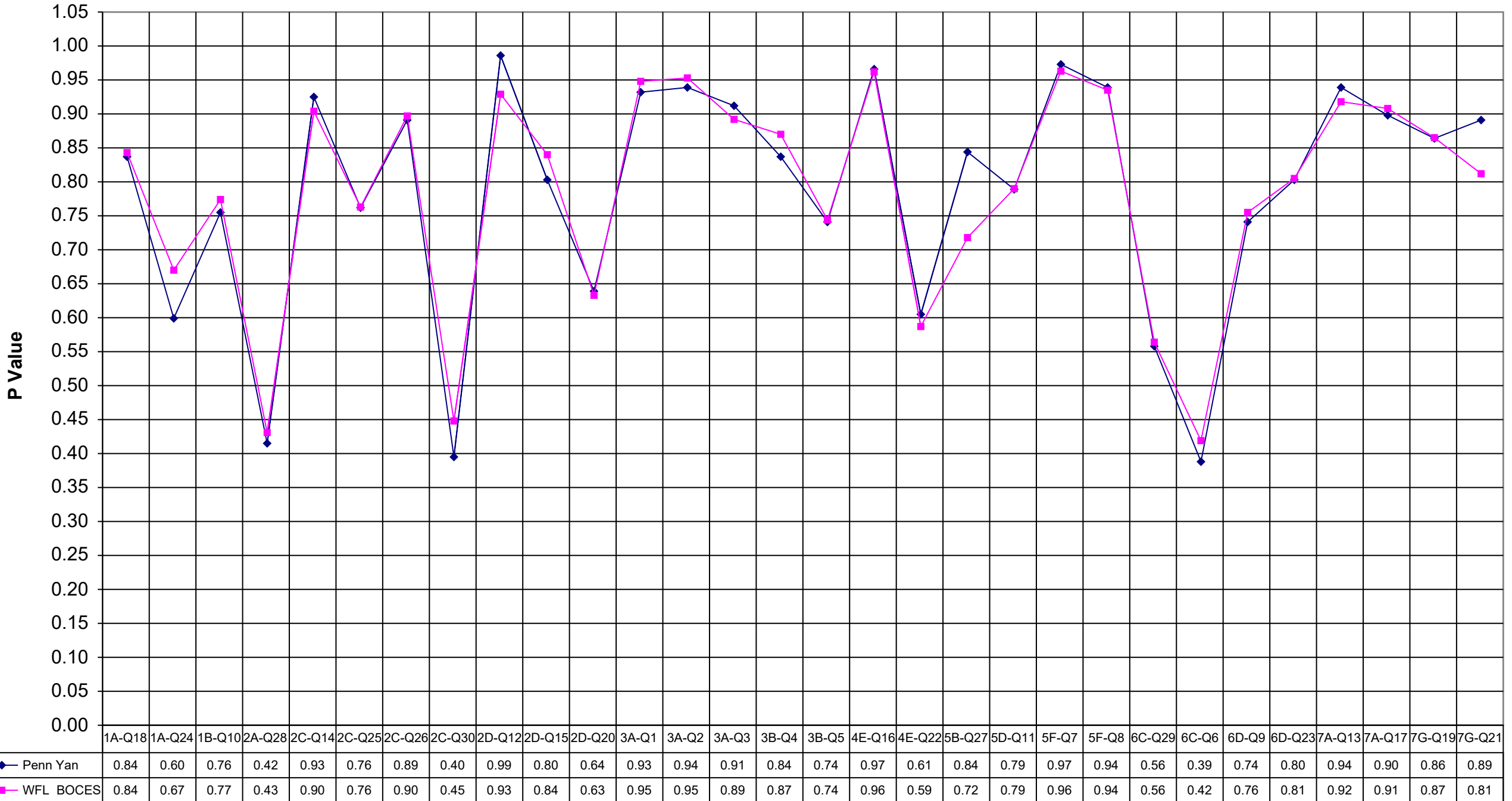
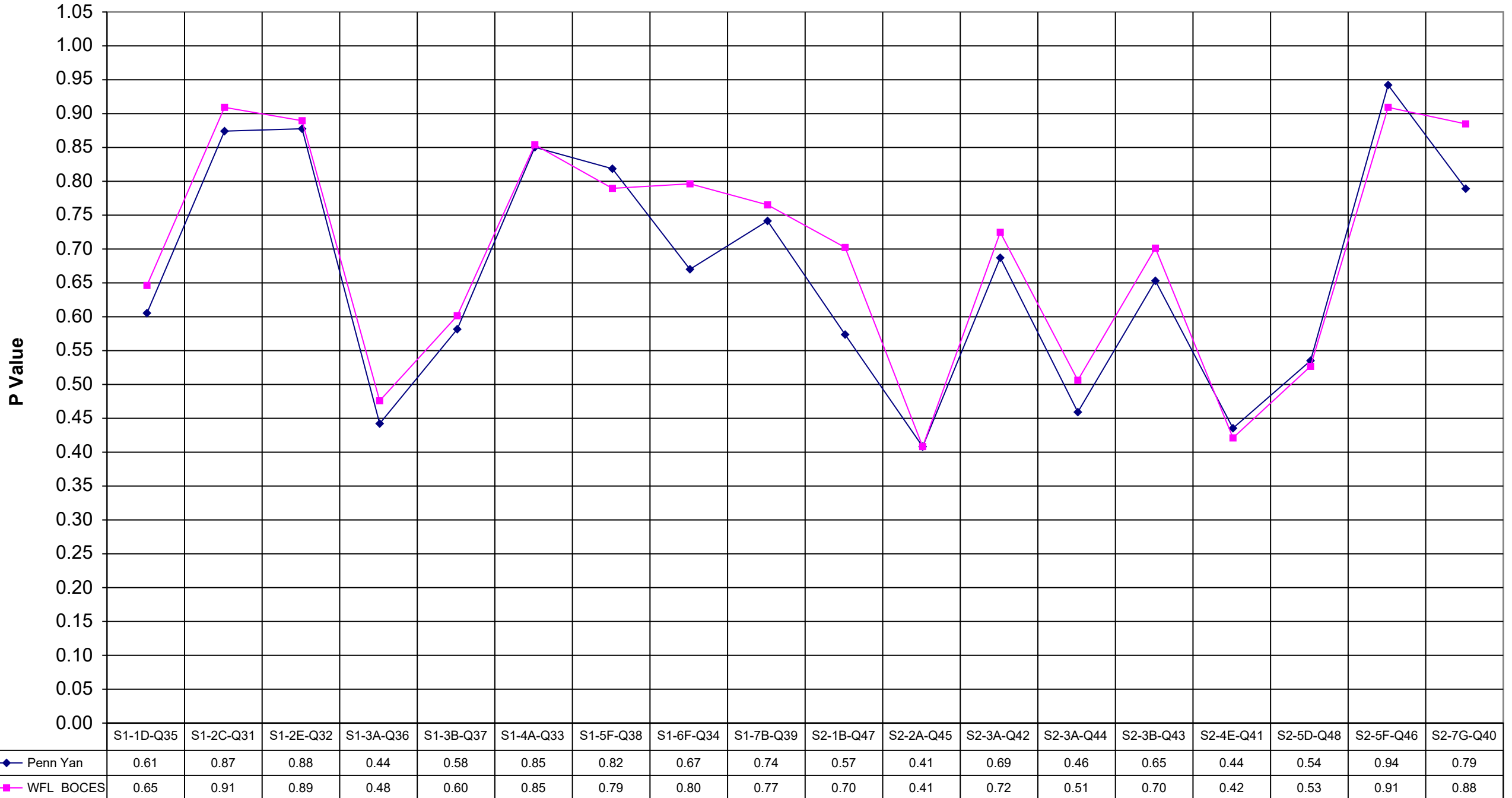


1999 PENN YAN Math 4



1999 PENN YAN Math 4



| | Penn Yan | WFL | BOCES |
|--------|----------|-----|-------|
| 1A-Q18 | 0.84 | | 0.84 |
| 1A-Q24 | 0.60 | | 0.67 |
| 1B-Q10 | 0.76 | | 0.77 |
| 2A-Q28 | 0.42 | | 0.43 |
| 2C-Q14 | 0.93 | | 0.90 |
| 2C-Q25 | 0.76 | | 0.76 |
| 2C-Q26 | 0.89 | | 0.90 |
| 2C-Q30 | 0.40 | | 0.45 |
| 2D-Q12 | 0.99 | | 0.93 |
| 2D-Q15 | 0.80 | | 0.84 |
| 2D-Q20 | 0.64 | | 0.63 |
| 3A-Q1 | 0.93 | | 0.95 |
| 3A-Q2 | 0.94 | | 0.95 |
| 3A-Q3 | 0.91 | | 0.89 |
| 3B-Q4 | 0.84 | | 0.87 |
| 3B-Q5 | 0.74 | | 0.74 |
| 4E-Q16 | 0.97 | | 0.96 |
| 4E-Q22 | 0.61 | | 0.59 |
| 5B-Q27 | 0.84 | | 0.72 |
| 5D-Q11 | 0.79 | | 0.79 |
| 5F-Q7 | 0.97 | | 0.96 |
| 5F-Q8 | 0.94 | | 0.94 |
| 6C-Q29 | 0.56 | | 0.56 |
| 6C-Q6 | 0.39 | | 0.42 |
| 6D-Q9 | 0.74 | | 0.76 |
| 6D-Q23 | 0.80 | | 0.81 |
| 7A-Q13 | 0.94 | | 0.92 |
| 7A-Q17 | 0.90 | | 0.91 |
| 7G-Q19 | 0.86 | | 0.87 |
| 7G-Q21 | 0.89 | | 0.81 |

| | Penn Yan | WFL | BOCES |
|-----------|----------|-----|-------|
| S1-1D-Q35 | 0.61 | | 0.65 |
| S1-2C-Q31 | 0.87 | | 0.91 |
| S1-2E-Q32 | 0.88 | | 0.89 |
| S1-3A-Q36 | 0.44 | | 0.48 |
| S1-3B-Q37 | 0.58 | | 0.60 |
| S1-4A-Q33 | 0.85 | | 0.85 |
| S1-5F-Q38 | 0.82 | | 0.79 |
| S1-6F-Q34 | 0.67 | | 0.80 |
| S1-7B-Q39 | 0.74 | | 0.77 |
| S2-1B-Q47 | 0.57 | | 0.70 |
| S2-2A-Q45 | 0.41 | | 0.41 |
| S2-3A-Q42 | 0.69 | | 0.72 |
| S2-3A-Q44 | 0.46 | | 0.51 |
| S2-3B-Q43 | 0.65 | | 0.70 |
| S2-4E-Q41 | 0.44 | | 0.42 |
| S2-5D-Q48 | 0.54 | | 0.53 |
| S2-5F-Q46 | 0.94 | | 0.91 |
| S2-7G-Q40 | 0.79 | | 0.88 |