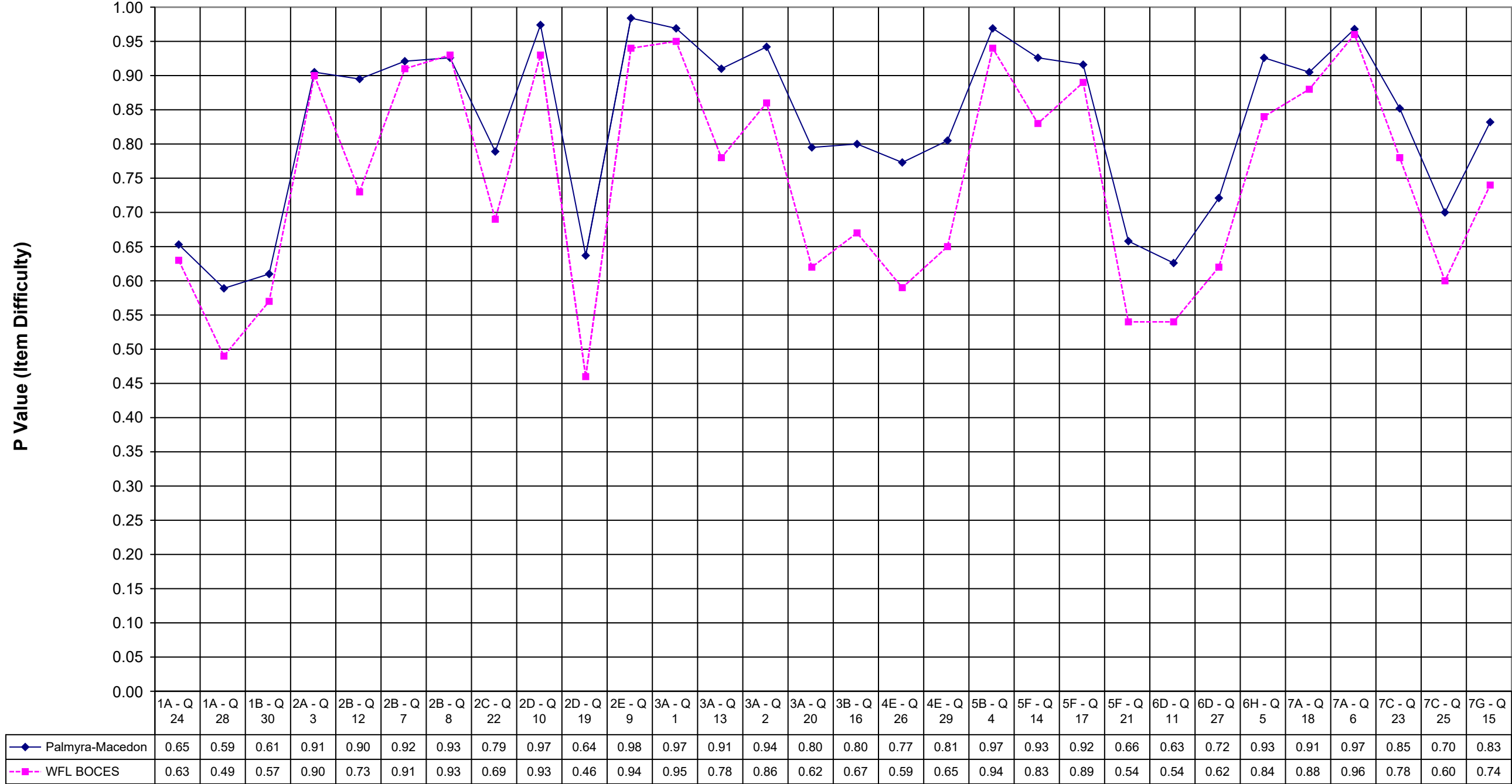
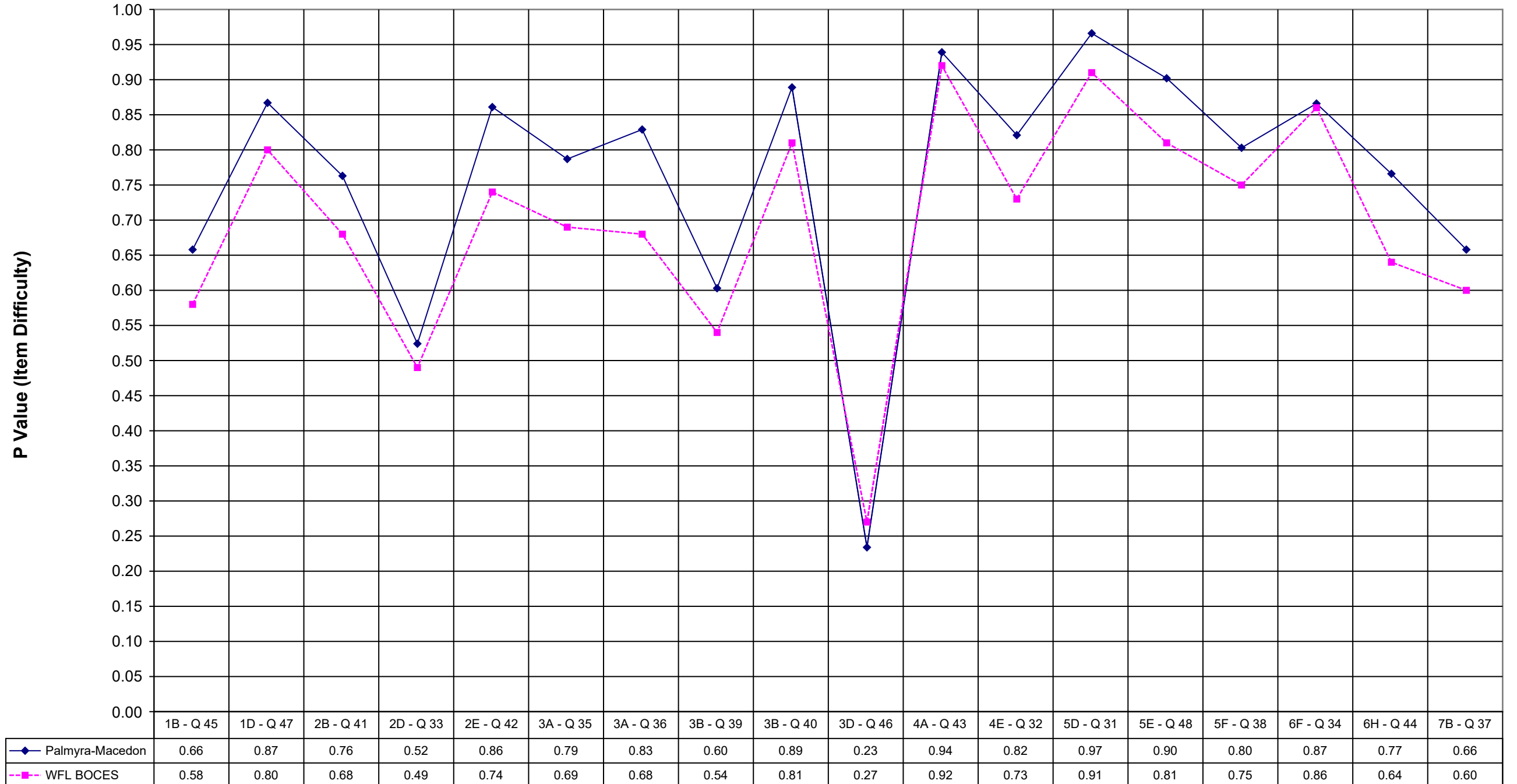


# 2004 Palmyra-Macedon Math 4 Multiple Choice



## 2004 Palmyra-Macedon Math 4 Extended Response



Palmyra-M:WFL BOCES

1A - Q 24	0.65	0.63
1A - Q 28	0.59	0.49
1B - Q 30	0.61	0.57
2A - Q 3	0.91	0.90
2B - Q 12	0.90	0.73
2B - Q 7	0.92	0.91
2B - Q 8	0.93	0.93
2C - Q 22	0.79	0.69
2D - Q 10	0.97	0.93
2D - Q 19	0.64	0.46
2E - Q 9	0.98	0.94
3A - Q 1	0.97	0.95
3A - Q 13	0.91	0.78
3A - Q 2	0.94	0.86
3A - Q 20	0.80	0.62
3B - Q 16	0.80	0.67
4E - Q 26	0.77	0.59
4E - Q 29	0.81	0.65
5B - Q 4	0.97	0.94
5F - Q 14	0.93	0.83
5F - Q 17	0.92	0.89
5F - Q 21	0.66	0.54
6D - Q 11	0.63	0.54
6D - Q 27	0.72	0.62
6H - Q 5	0.93	0.84
7A - Q 18	0.91	0.88
7A - Q 6	0.97	0.96
7C - Q 23	0.85	0.78
7C - Q 25	0.70	0.60
7G - Q 15	0.83	0.74

Palmyra-M:WFL BOCES

1B - Q 45	0.66	0.58
1D - Q 47	0.87	0.80
2B - Q 41	0.76	0.68
2D - Q 33	0.52	0.49
2E - Q 42	0.86	0.74
3A - Q 35	0.79	0.69
3A - Q 36	0.83	0.68
3B - Q 39	0.60	0.54
3B - Q 40	0.89	0.81
3D - Q 46	0.23	0.27
4A - Q 43	0.94	0.92
4E - Q 32	0.82	0.73
5D - Q 31	0.97	0.91
5E - Q 48	0.90	0.81
5F - Q 38	0.80	0.75
6F - Q 34	0.87	0.86
6H - Q 44	0.77	0.64
7B - Q 37	0.66	0.60