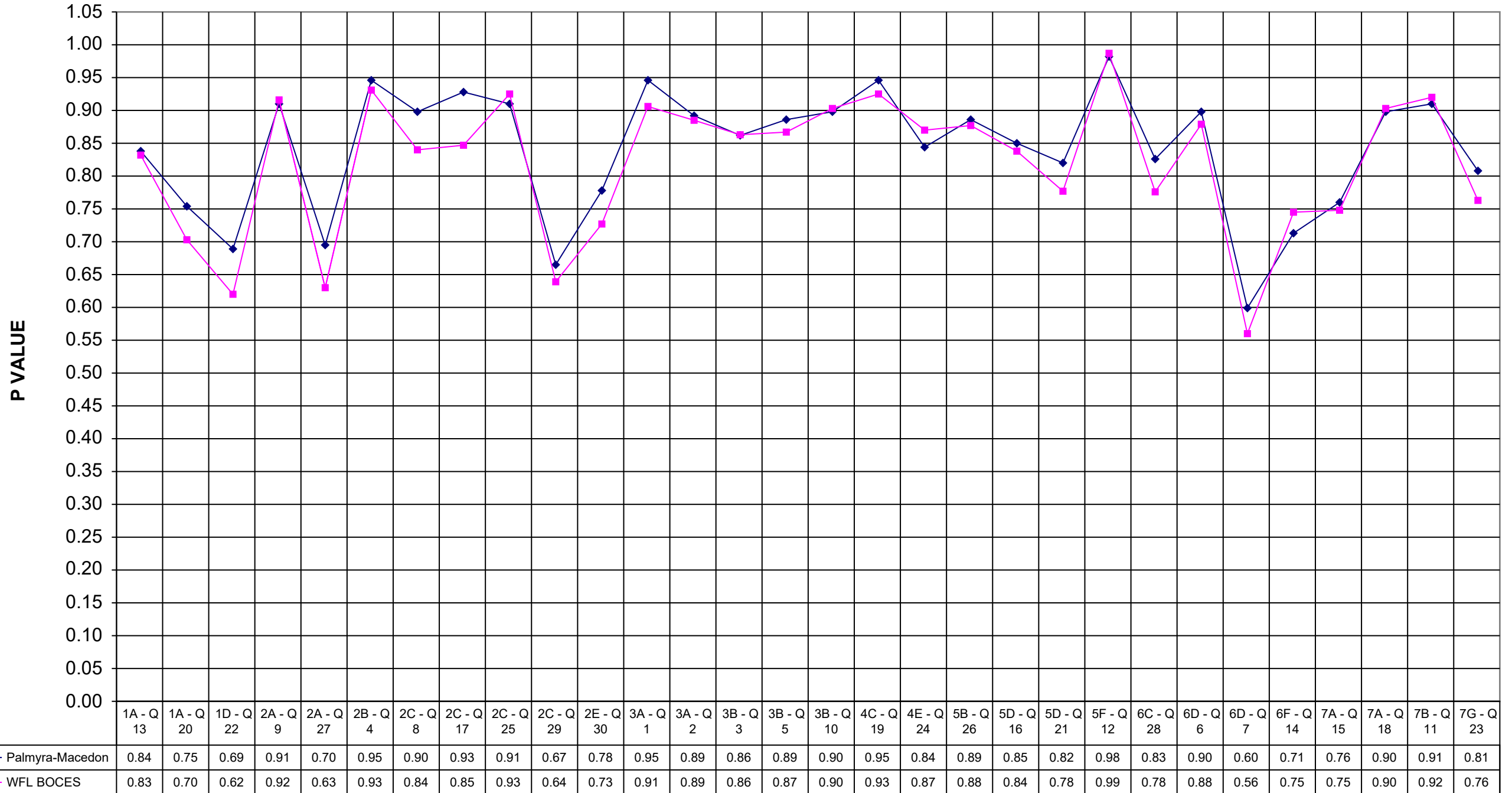
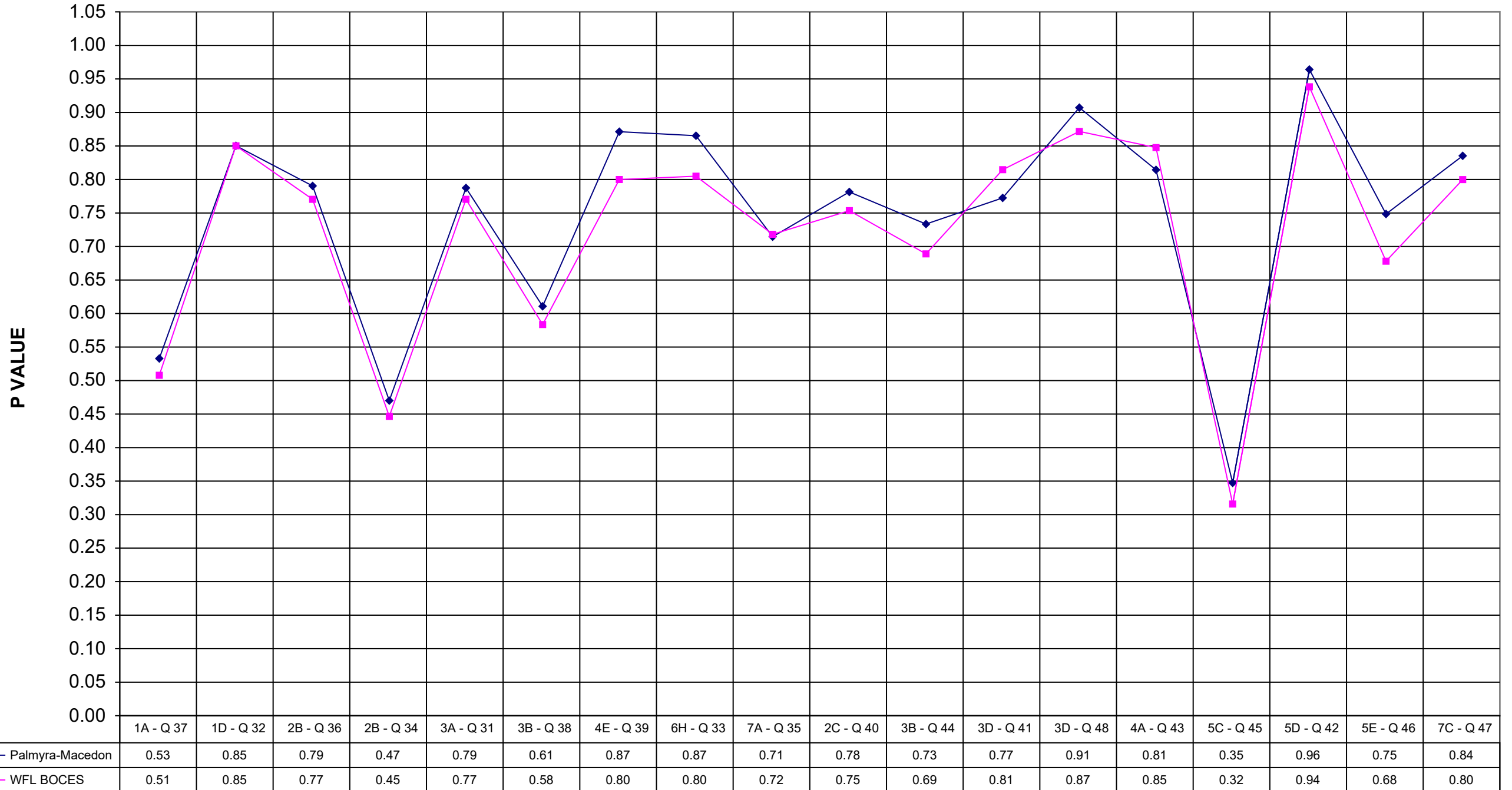


2001 PALMYRA-MACEDON MATH 4



2001 PALMYRA-MACEDON MATH 4



	Palmyra-Macedon	WFL BOCES
1A - Q 13	0.84	0.83
1A - Q 20	0.75	0.70
1D - Q 22	0.69	0.62
2A - Q 9	0.91	0.92
2A - Q 27	0.70	0.63
2B - Q 4	0.95	0.93
2C - Q 8	0.90	0.84
2C - Q 17	0.93	0.85
2C - Q 25	0.91	0.93
2C - Q 29	0.67	0.64
2E - Q 30	0.78	0.73
3A - Q 1	0.95	0.91
3A - Q 2	0.89	0.89
3B - Q 3	0.86	0.86
3B - Q 5	0.89	0.87
3B - Q 10	0.90	0.90
4C - Q 19	0.95	0.93
4E - Q 24	0.84	0.87
5B - Q 26	0.89	0.88
5D - Q 16	0.85	0.84
5D - Q 21	0.82	0.78
5F - Q 12	0.98	0.99
6C - Q 28	0.83	0.78
6D - Q 6	0.90	0.88
6D - Q 7	0.60	0.56
6F - Q 14	0.71	0.75
7A - Q 15	0.76	0.75
7A - Q 18	0.90	0.90
7B - Q 11	0.91	0.92
7G - Q 23	0.81	0.76

	Palmyra-Macedon	WFL BOCES
1A - Q 37	0.53	0.51
1D - Q 32	0.85	0.85
2B - Q 36	0.79	0.77
2B - Q 34	0.47	0.45
3A - Q 31	0.79	0.77
3B - Q 38	0.61	0.58
4E - Q 39	0.87	0.80
6H - Q 33	0.87	0.80
7A - Q 35	0.71	0.72
2C - Q 40	0.78	0.75
3B - Q 44	0.73	0.69
3D - Q 41	0.77	0.81
3D - Q 48	0.91	0.87
4A - Q 43	0.81	0.85
5C - Q 45	0.35	0.32
5D - Q 42	0.96	0.94
5E - Q 46	0.75	0.68
7C - Q 47	0.84	0.80