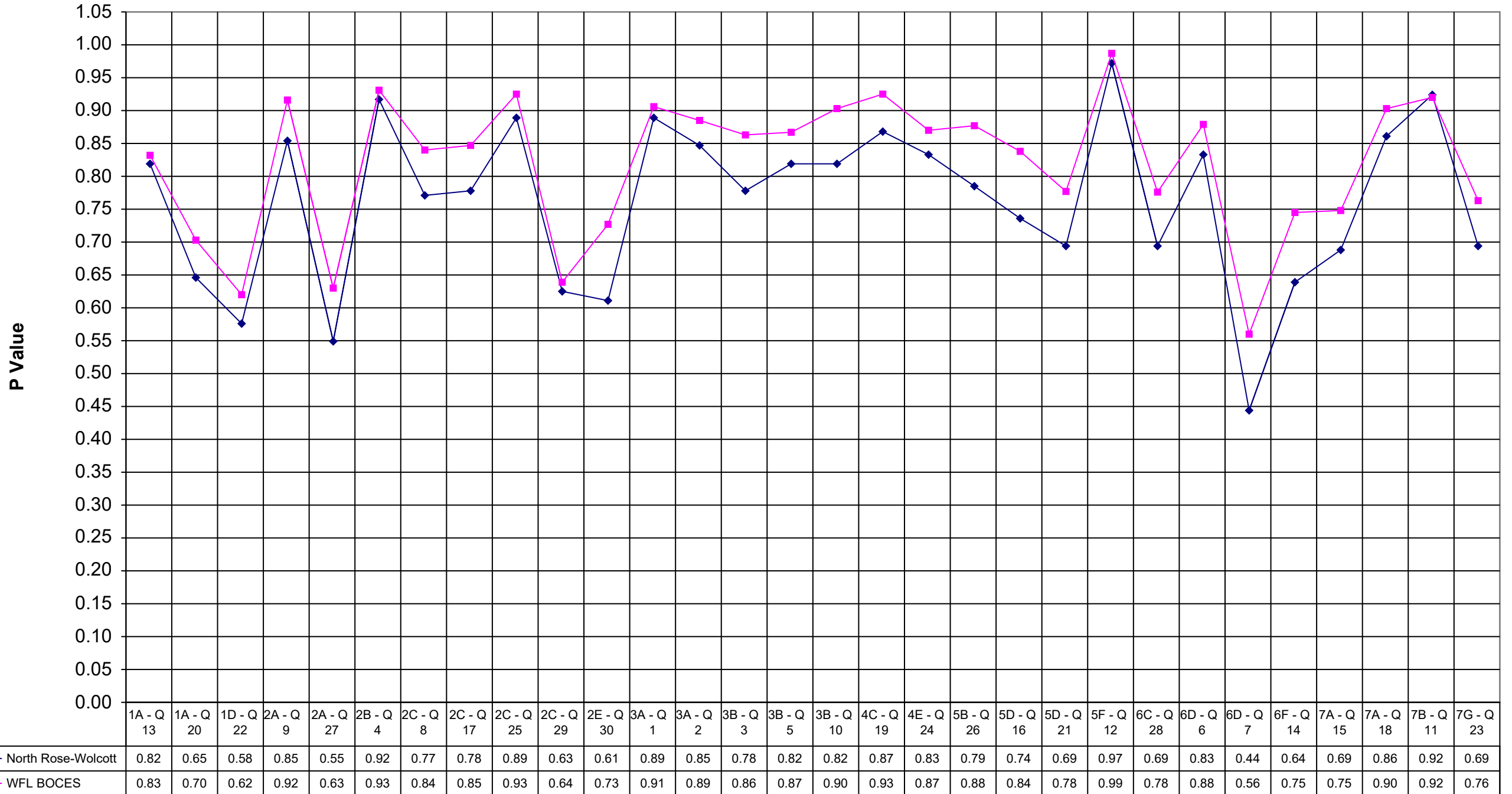
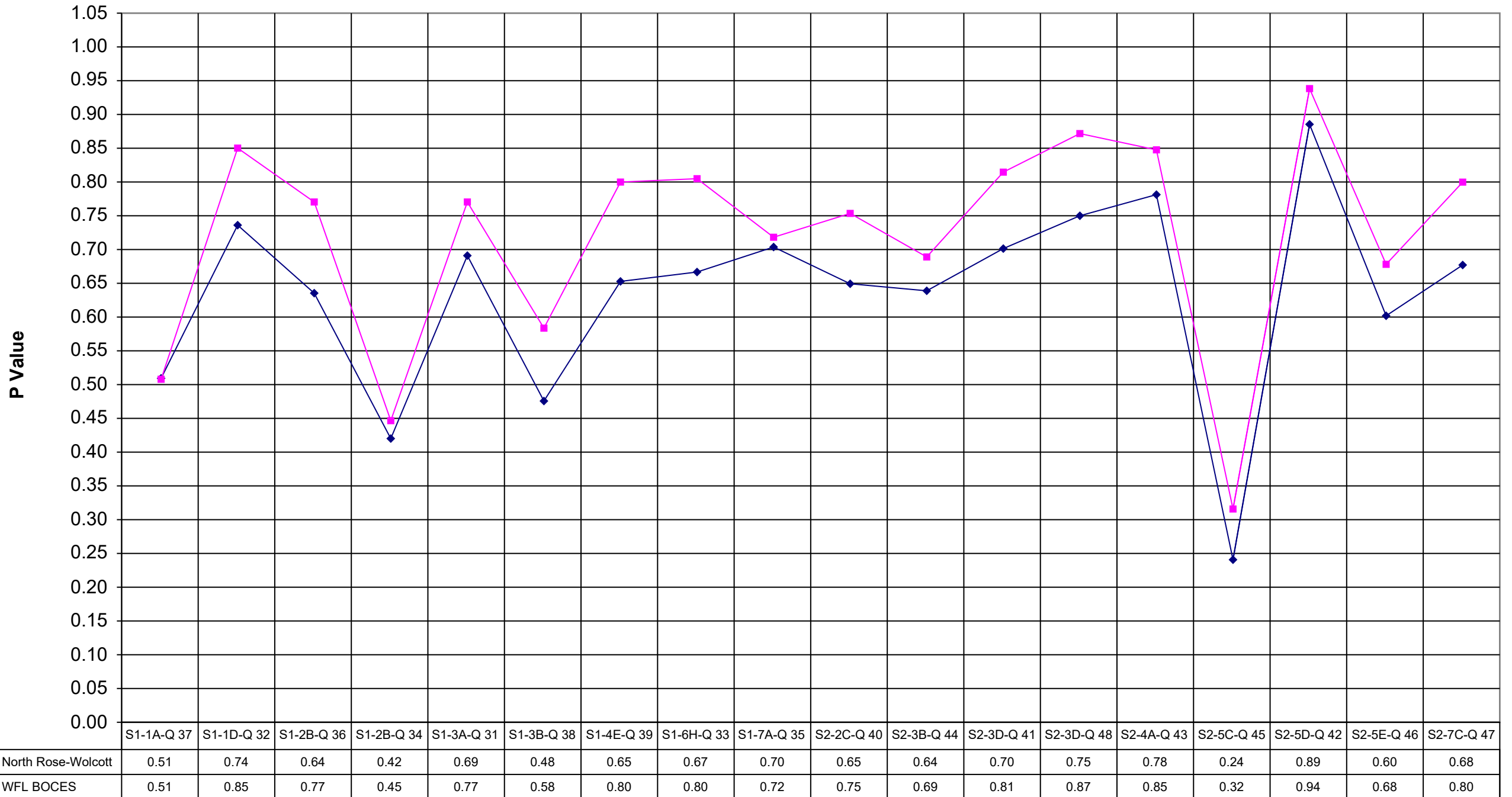


2001 North Rose-Wolcott Math 4



2001 North Rose-Wolcott Math 4



	North Rose-Wolcott	WFL BOCES
1A - Q 13	0.82	0.83
1A - Q 20	0.65	0.70
1D - Q 22	0.58	0.62
2A - Q 9	0.85	0.92
2A - Q 27	0.55	0.63
2B - Q 4	0.92	0.93
2C - Q 8	0.77	0.84
2C - Q 17	0.78	0.85
2C - Q 25	0.89	0.93
2C - Q 29	0.63	0.64
2E - Q 30	0.61	0.73
3A - Q 1	0.89	0.91
3A - Q 2	0.85	0.89
3B - Q 3	0.78	0.86
3B - Q 5	0.82	0.87
3B - Q 10	0.82	0.90
4C - Q 19	0.87	0.93
4E - Q 24	0.83	0.87
5B - Q 26	0.79	0.88
5D - Q 16	0.74	0.84
5D - Q 21	0.69	0.78
5F - Q 12	0.97	0.99
6C - Q 28	0.69	0.78
6D - Q 6	0.83	0.88
6D - Q 7	0.44	0.56
6F - Q 14	0.64	0.75
7A - Q 15	0.69	0.75
7A - Q 18	0.86	0.90
7B - Q 11	0.92	0.92
7G - Q 23	0.69	0.76

	North Rose-Wolcott	WFL BOCES
S1-1A-Q 37	0.51	0.51
S1-1D-Q 32	0.74	0.85
S1-2B-Q 36	0.64	0.77
S1-2B-Q 34	0.42	0.45
S1-3A-Q 31	0.69	0.77
S1-3B-Q 38	0.48	0.58
S1-4E-Q 39	0.65	0.80
S1-6H-Q 33	0.67	0.80
S1-7A-Q 35	0.70	0.72
S2-2C-Q 40	0.65	0.75
S2-3B-Q 44	0.64	0.69
S2-3D-Q 41	0.70	0.81
S2-3D-Q 48	0.75	0.87
S2-4A-Q 43	0.78	0.85
S2-5C-Q 45	0.24	0.32
S2-5D-Q 42	0.89	0.94
S2-5E-Q 46	0.60	0.68
S2-7C-Q 47	0.68	0.80