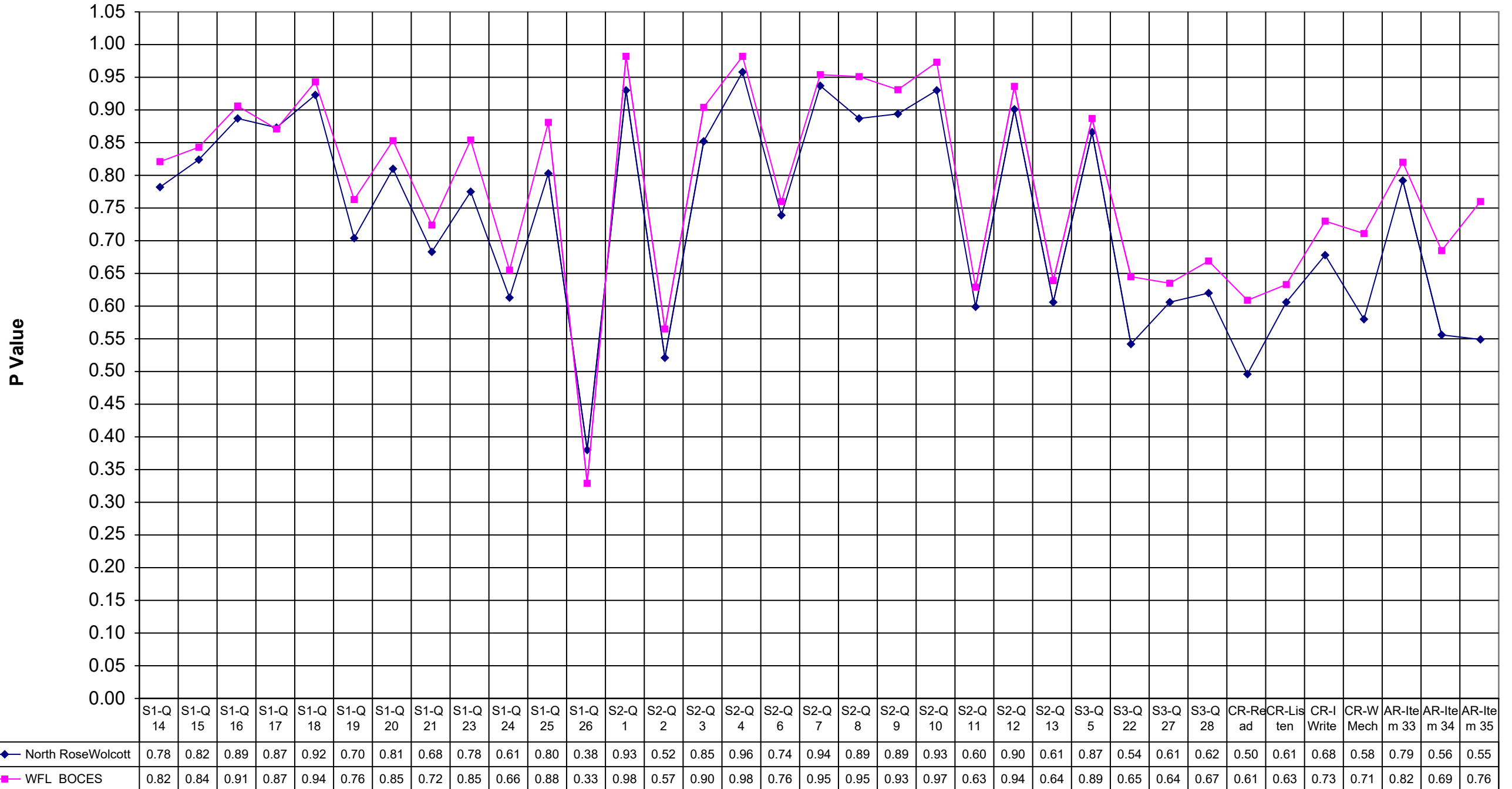


2001 North Rose-Wolcott ELA 4



	North RoseWolcott	WFL	BOCES
S1-Q 14	0.78		0.82
S1-Q 15	0.82		0.84
S1-Q 16	0.89		0.91
S1-Q 17	0.87		0.87
S1-Q 18	0.92		0.94
S1-Q 19	0.70		0.76
S1-Q 20	0.81		0.85
S1-Q 21	0.68		0.72
S1-Q 23	0.78		0.85
S1-Q 24	0.61		0.66
S1-Q 25	0.80		0.88
S1-Q 26	0.38		0.33
S2-Q 1	0.93		0.98
S2-Q 2	0.52		0.57
S2-Q 3	0.85		0.90
S2-Q 4	0.96		0.98
S2-Q 6	0.74		0.76
S2-Q 7	0.94		0.95
S2-Q 8	0.89		0.95
S2-Q 9	0.89		0.93
S2-Q 10	0.93		0.97
S2-Q 11	0.60		0.63
S2-Q 12	0.90		0.94
S2-Q 13	0.61		0.64
S3-Q 5	0.87		0.89
S3-Q 22	0.54		0.65
S3-Q 27	0.61		0.64
S3-Q 28	0.62		0.67
CR-Read	0.50		0.61
CR-Listen	0.61		0.63
CR-I Write	0.68		0.73
CR-W Mech	0.58		0.71
AR-Item 33	0.79		0.82
AR-Item 34	0.56		0.69
AR-Item 35	0.55		0.76