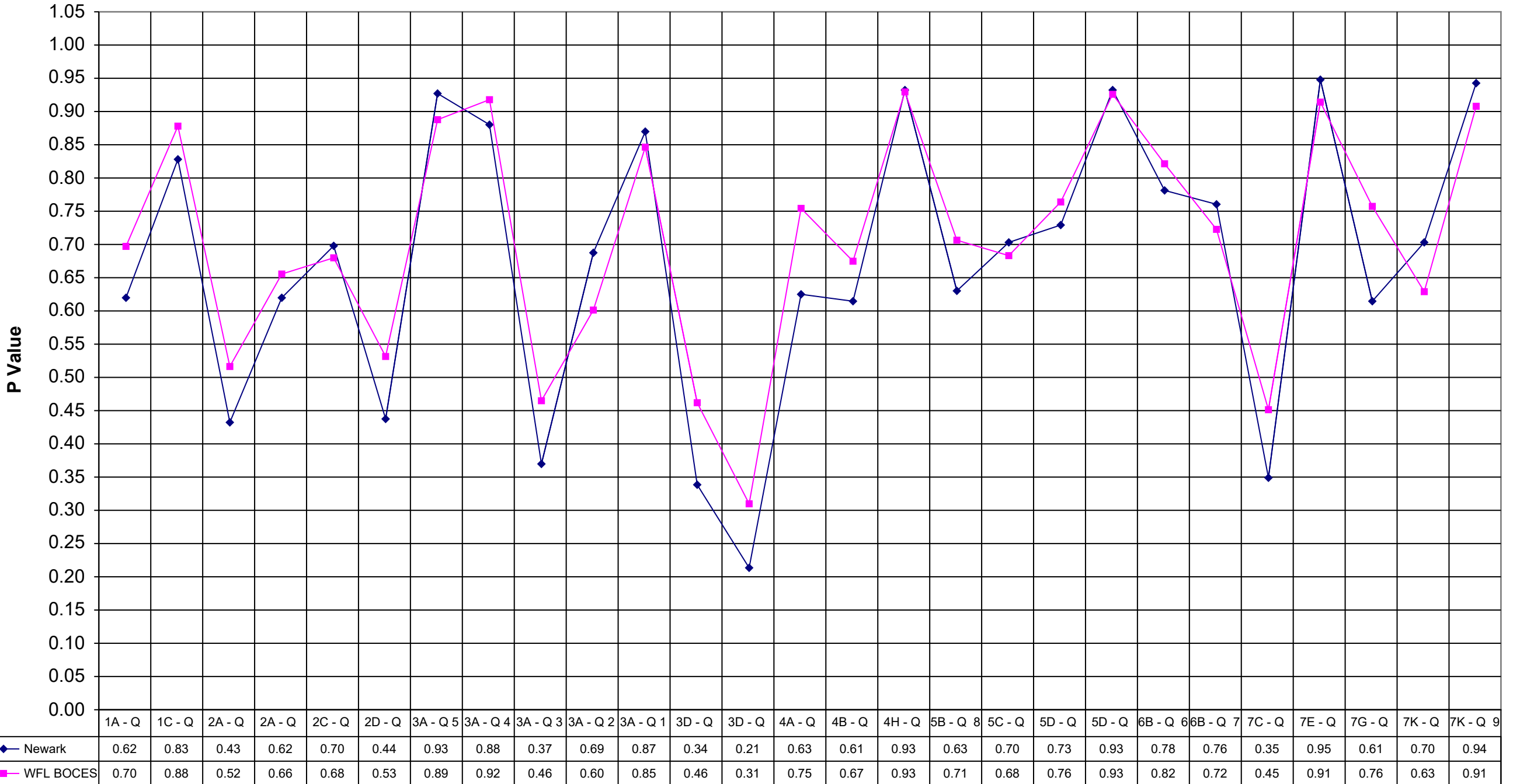


2001 Newark Math 8



2001 Newark Math 8



Newark WFL BOCES

| | | |
|-----------|------|------|
| 1A - Q 21 | 0.62 | 0.70 |
| 1C - Q 12 | 0.83 | 0.88 |
| 2A - Q 17 | 0.43 | 0.52 |
| 2A - Q 22 | 0.62 | 0.66 |
| 2C - Q 16 | 0.70 | 0.68 |
| 2D - Q 19 | 0.44 | 0.53 |
| 3A - Q 5 | 0.93 | 0.89 |
| 3A - Q 4 | 0.88 | 0.92 |
| 3A - Q 3 | 0.37 | 0.46 |
| 3A - Q 2 | 0.69 | 0.60 |
| 3A - Q 1 | 0.87 | 0.85 |
| 3D - Q 25 | 0.34 | 0.46 |
| 3D - Q 26 | 0.21 | 0.31 |
| 4A - Q 27 | 0.63 | 0.75 |
| 4B - Q 14 | 0.61 | 0.67 |
| 4H - Q 20 | 0.93 | 0.93 |
| 5B - Q 8 | 0.63 | 0.71 |
| 5C - Q 18 | 0.70 | 0.68 |
| 5D - Q 13 | 0.73 | 0.76 |
| 5D - Q 11 | 0.93 | 0.93 |
| 6B - Q 6 | 0.78 | 0.82 |
| 6B - Q 7 | 0.76 | 0.72 |
| 7C - Q 24 | 0.35 | 0.45 |
| 7E - Q 15 | 0.95 | 0.91 |
| 7G - Q 10 | 0.61 | 0.76 |
| 7K - Q 23 | 0.70 | 0.63 |
| 7K - Q 9 | 0.94 | 0.91 |

Newark WFL BOCES

| | | |
|------------|------|------|
| S1-1A-Q 28 | 0.48 | 0.55 |
| S1-1C-Q 30 | 0.75 | 0.68 |
| S1-2C-Q 29 | 0.18 | 0.27 |
| S1-4J-Q 31 | 0.42 | 0.39 |
| S1-5C-Q 32 | 0.26 | 0.45 |
| S1-6C-Q 33 | 0.71 | 0.71 |
| S2-1D-Q 40 | 0.43 | 0.32 |
| S2-2A-Q 34 | 0.36 | 0.48 |
| S2-3A-Q 39 | 0.48 | 0.57 |
| S2-3G-Q 36 | 0.34 | 0.45 |
| S2-4F-Q 41 | 0.22 | 0.35 |
| S2-4H-Q 45 | 0.41 | 0.69 |
| S2-5C-Q 43 | 0.50 | 0.60 |
| S2-6B-Q 38 | 0.66 | 0.64 |
| S2-7A-Q 37 | 0.50 | 0.54 |
| S2-7C-Q 44 | 0.51 | 0.58 |
| S2-7H-Q 35 | 0.66 | 0.71 |
| S2-7I-Q 42 | 0.33 | 0.58 |