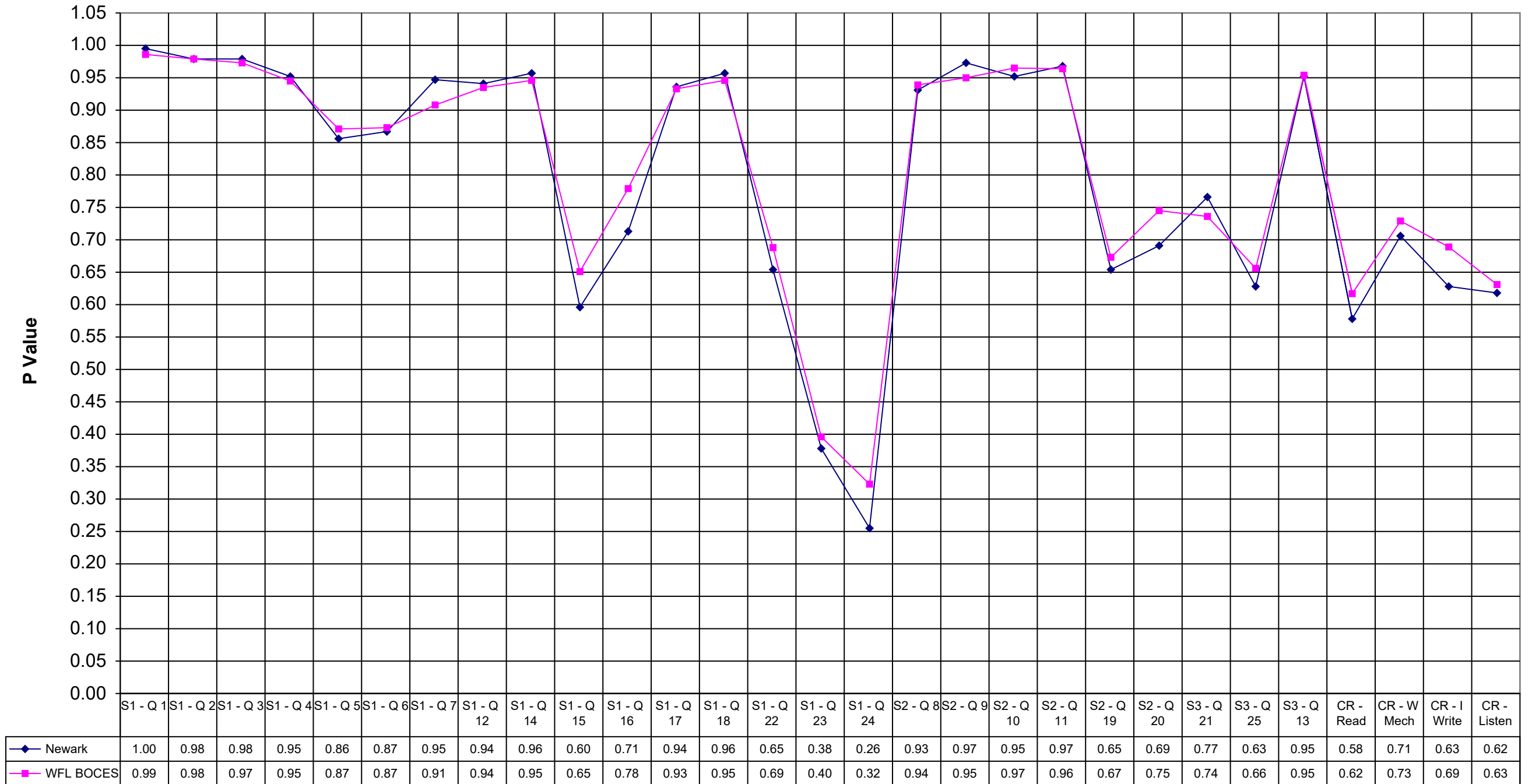


## 2001 Newark ELA 8



|              | Newark | WFL BOCES |
|--------------|--------|-----------|
| S1 - Q 1     | 1.00   | 0.99      |
| S1 - Q 2     | 0.98   | 0.98      |
| S1 - Q 3     | 0.98   | 0.97      |
| S1 - Q 4     | 0.95   | 0.95      |
| S1 - Q 5     | 0.86   | 0.87      |
| S1 - Q 6     | 0.87   | 0.87      |
| S1 - Q 7     | 0.95   | 0.91      |
| S1 - Q 12    | 0.94   | 0.94      |
| S1 - Q 14    | 0.96   | 0.95      |
| S1 - Q 15    | 0.60   | 0.65      |
| S1 - Q 16    | 0.71   | 0.78      |
| S1 - Q 17    | 0.94   | 0.93      |
| S1 - Q 18    | 0.96   | 0.95      |
| S1 - Q 22    | 0.65   | 0.69      |
| S1 - Q 23    | 0.38   | 0.40      |
| S1 - Q 24    | 0.26   | 0.32      |
| S2 - Q 8     | 0.93   | 0.94      |
| S2 - Q 9     | 0.97   | 0.95      |
| S2 - Q 10    | 0.95   | 0.97      |
| S2 - Q 11    | 0.97   | 0.96      |
| S2 - Q 19    | 0.65   | 0.67      |
| S2 - Q 20    | 0.69   | 0.75      |
| S3 - Q 21    | 0.77   | 0.74      |
| S3 - Q 25    | 0.63   | 0.66      |
| S3 - Q 13    | 0.95   | 0.95      |
| CR - Read    | 0.58   | 0.62      |
| CR - W Mech  | 0.71   | 0.73      |
| CR - I Write | 0.63   | 0.69      |
| CR - Listen  | 0.62   | 0.63      |