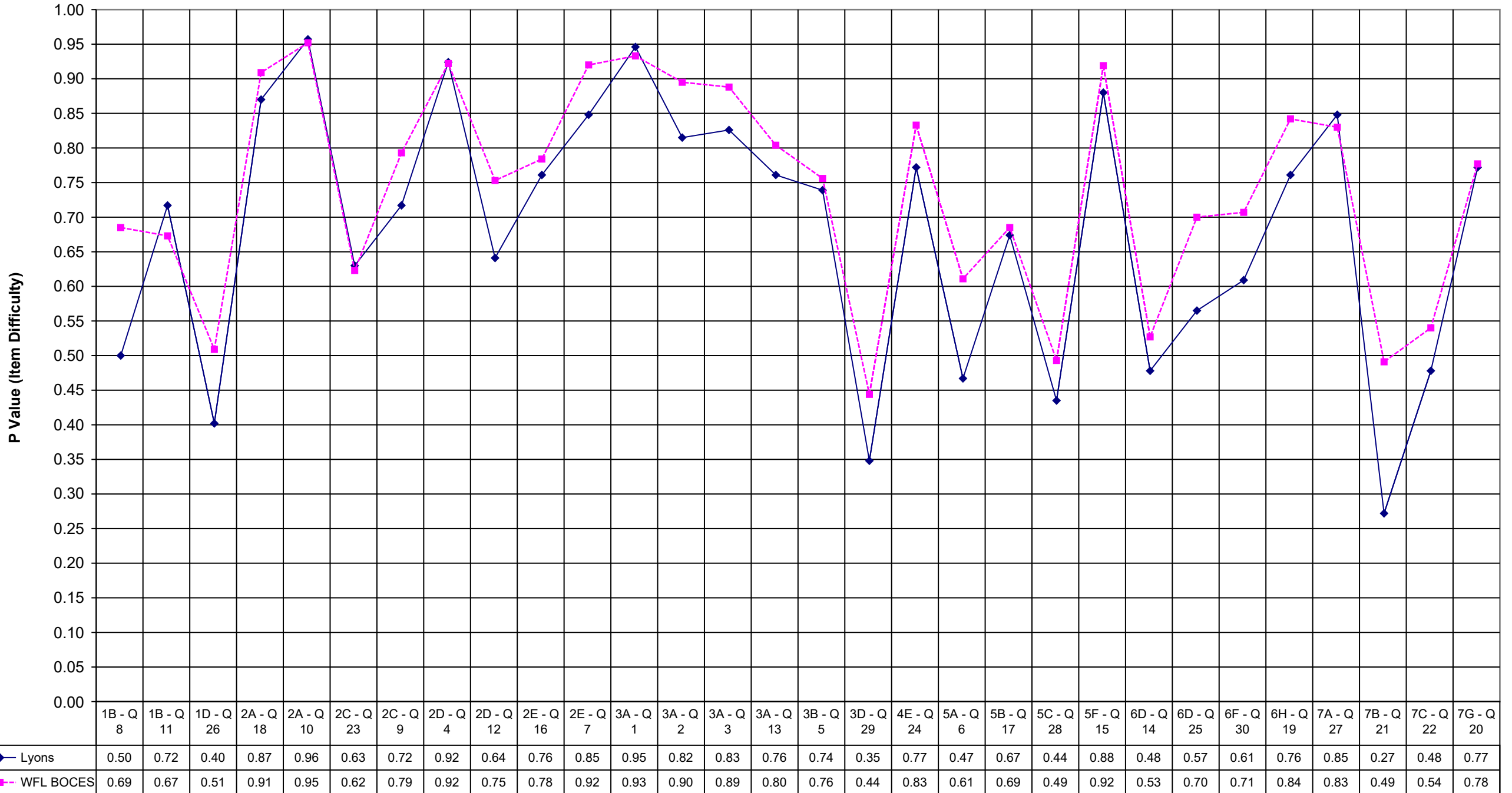
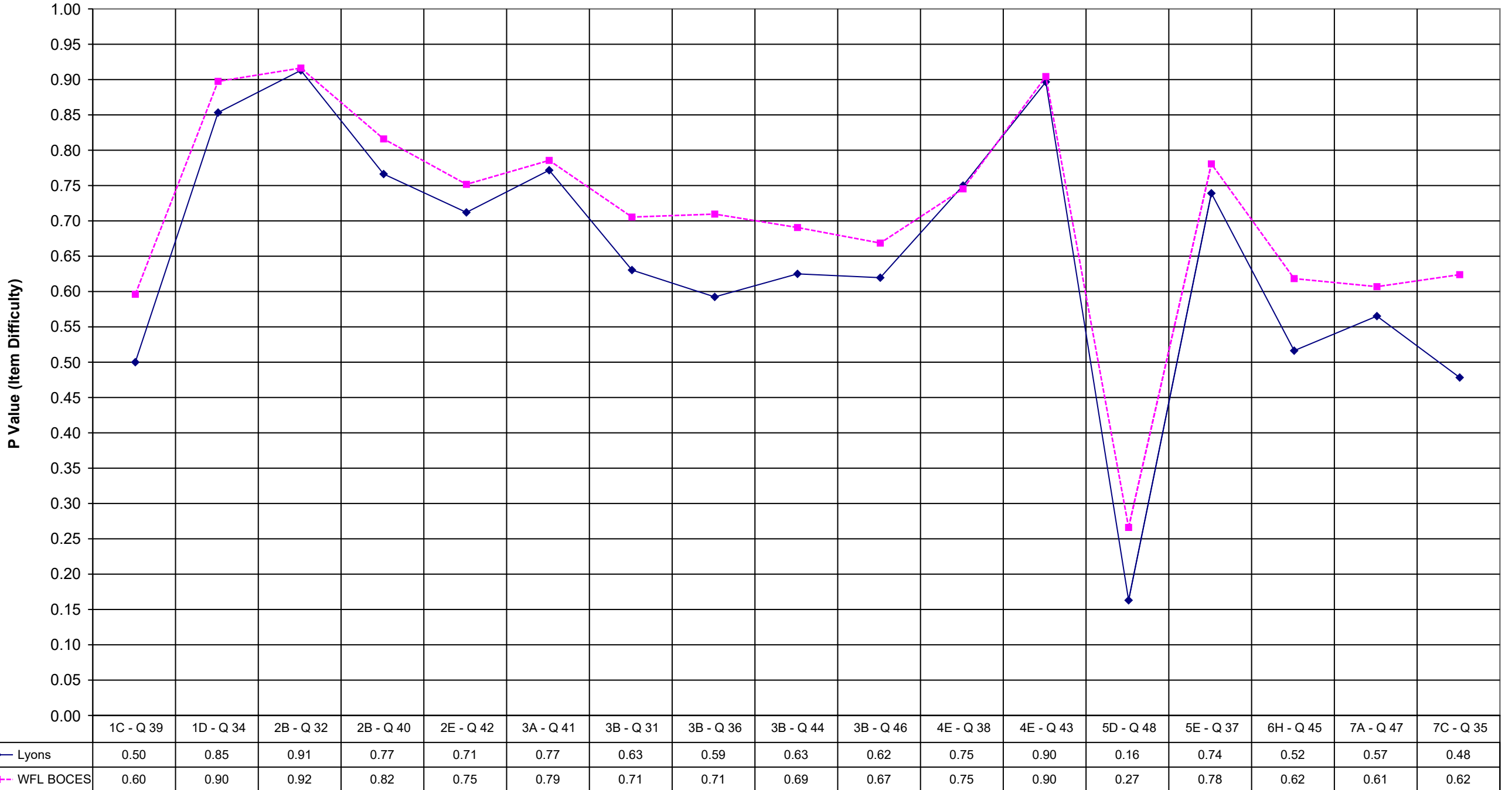


2003 Lyons Math 4 Multiple Choice



2003 Lyons Math 4 Extended Response



	Lyons	WFL BOCES
1B - Q 8	0.50	0.69
1B - Q 11	0.72	0.67
1D - Q 26	0.40	0.51
2A - Q 18	0.87	0.91
2A - Q 10	0.96	0.95
2C - Q 23	0.63	0.62
2C - Q 9	0.72	0.79
2D - Q 4	0.92	0.92
2D - Q 12	0.64	0.75
2E - Q 16	0.76	0.78
2E - Q 7	0.85	0.92
3A - Q 1	0.95	0.93
3A - Q 2	0.82	0.90
3A - Q 3	0.83	0.89
3A - Q 13	0.76	0.80
3B - Q 5	0.74	0.76
3D - Q 29	0.35	0.44
4E - Q 24	0.77	0.83
5A - Q 6	0.47	0.61
5B - Q 17	0.67	0.69
5C - Q 28	0.44	0.49
5F - Q 15	0.88	0.92
6D - Q 14	0.48	0.53
6D - Q 25	0.57	0.70
6F - Q 30	0.61	0.71
6H - Q 19	0.76	0.84
7A - Q 27	0.85	0.83
7B - Q 21	0.27	0.49
7C - Q 22	0.48	0.54
7G - Q 20	0.77	0.78

	Lyons	WFL BOCES
1C - Q 39	0.50	0.60
1D - Q 34	0.85	0.90
2B - Q 32	0.91	0.92
2B - Q 40	0.77	0.82
2E - Q 42	0.71	0.75
3A - Q 41	0.77	0.79
3B - Q 31	0.63	0.71
3B - Q 36	0.59	0.71
3B - Q 44	0.63	0.69
3B - Q 46	0.62	0.67
4E - Q 38	0.75	0.75
4E - Q 43	0.90	0.90
5D - Q 48	0.16	0.27
5E - Q 37	0.74	0.78
6H - Q 45	0.52	0.62
7A - Q 47	0.57	0.61
7C - Q 35	0.48	0.62