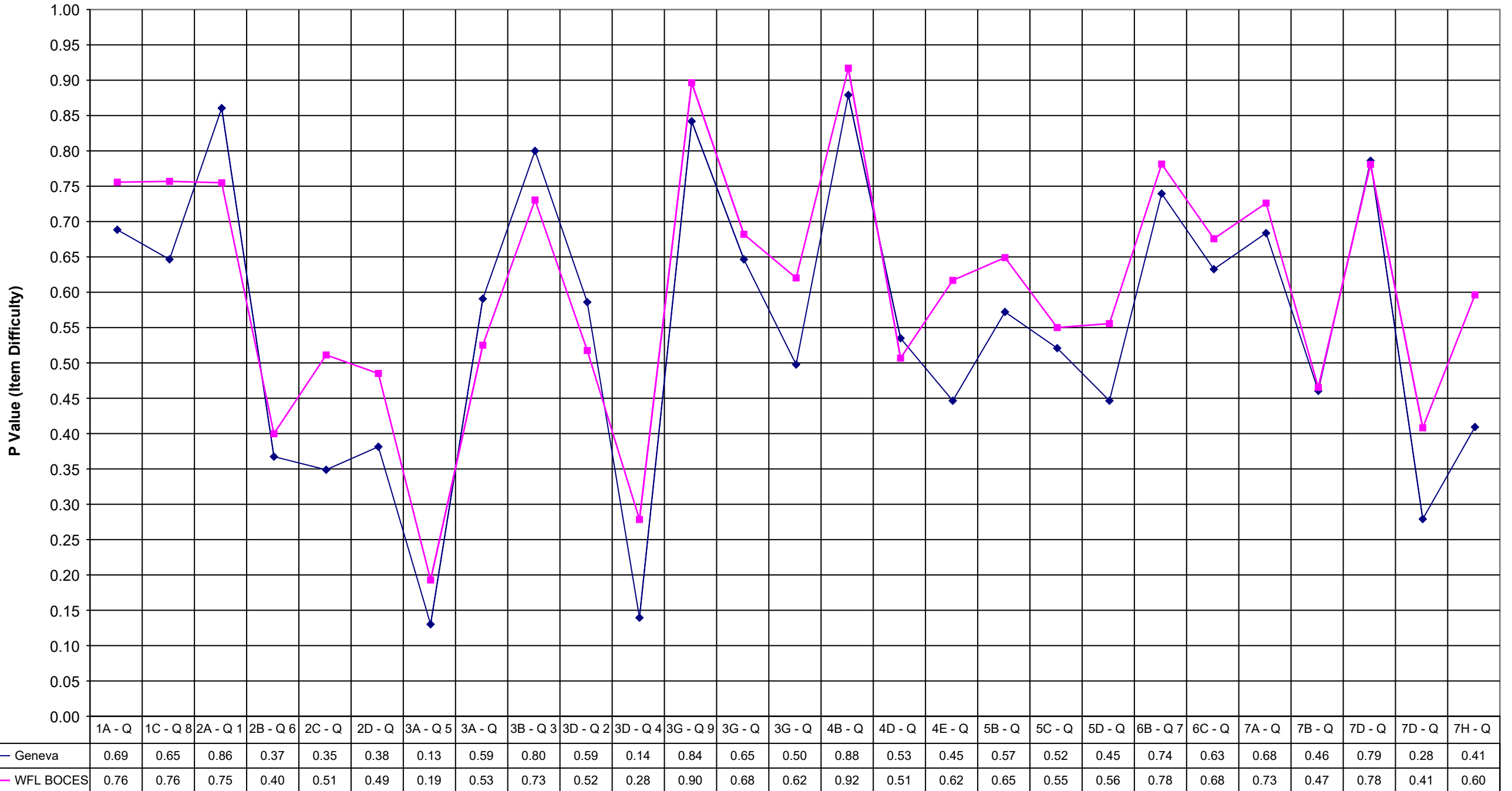
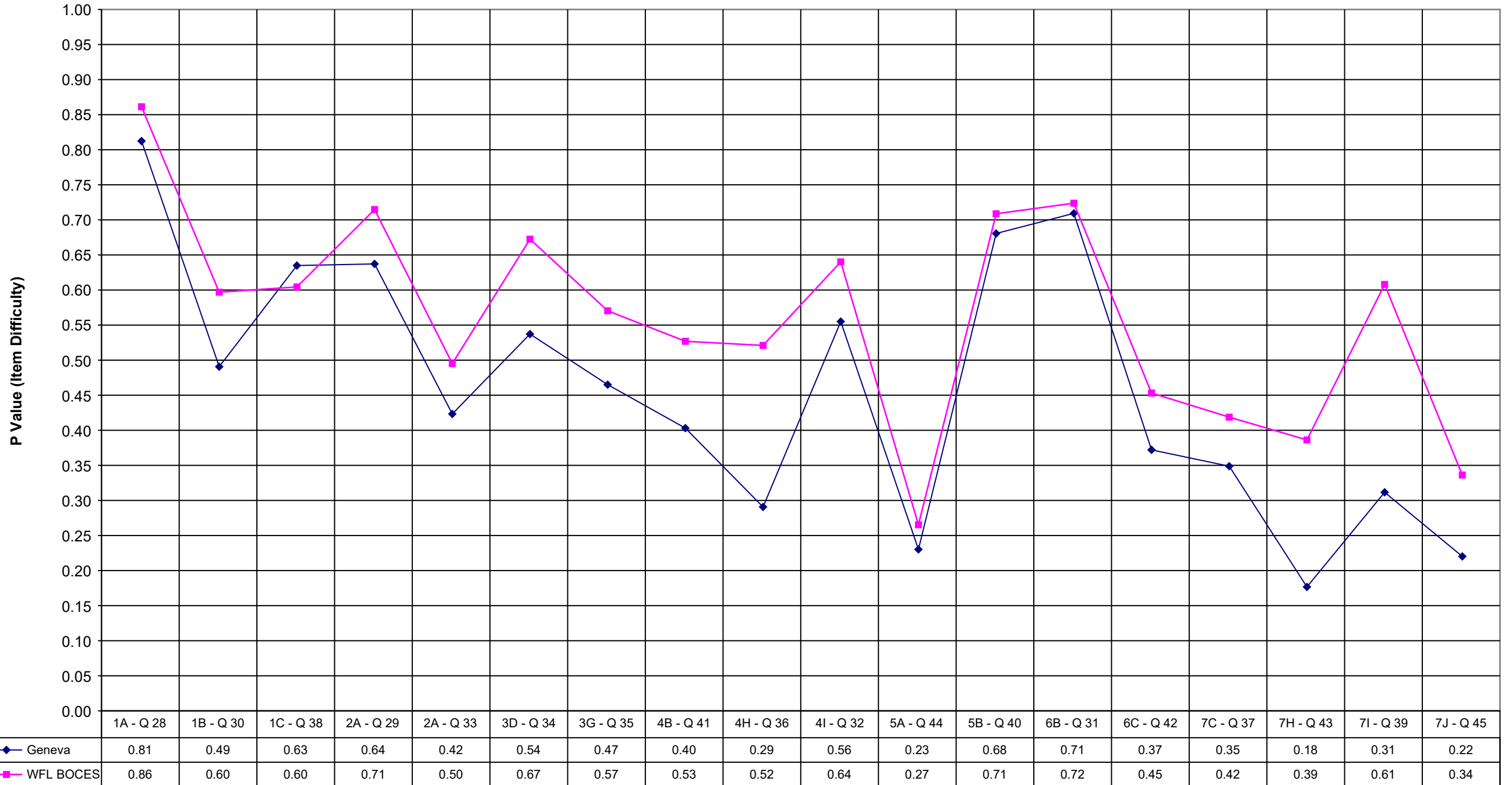


## 2002 Geneva Math 8 Multiple Choice



## 2002 Geneva Math 8 Extended Response



	Geneva	WFL BOCES
1A - Q 13	0.69	0.76
1C - Q 8	0.65	0.76
2A - Q 1	0.86	0.75
2B - Q 6	0.37	0.40
2C - Q 14	0.35	0.51
2D - Q 12	0.38	0.49
3A - Q 5	0.13	0.19
3A - Q 17	0.59	0.53
3B - Q 3	0.80	0.73
3D - Q 2	0.59	0.52
3D - Q 4	0.14	0.28
3G - Q 9	0.84	0.90
3G - Q 11	0.65	0.68
3G - Q 16	0.50	0.62
4B - Q 18	0.88	0.92
4D - Q 27	0.53	0.51
4E - Q 15	0.45	0.62
5B - Q 10	0.57	0.65
5C - Q 21	0.52	0.55
5D - Q 20	0.45	0.56
6B - Q 7	0.74	0.78
6C - Q 22	0.63	0.68
7A - Q 23	0.68	0.73
7B - Q 24	0.46	0.47
7D - Q 25	0.79	0.78
7D - Q 19	0.28	0.41
7H - Q 26	0.41	0.60

	Geneva	WFL BOCES
1A - Q 28	0.81	0.86
1B - Q 30	0.49	0.60
1C - Q 38	0.63	0.60
2A - Q 29	0.64	0.71
2A - Q 33	0.42	0.50
3D - Q 34	0.54	0.67
3G - Q 35	0.47	0.57
4B - Q 41	0.40	0.53
4H - Q 36	0.29	0.52
4I - Q 32	0.56	0.64
5A - Q 44	0.23	0.27
5B - Q 40	0.68	0.71
6B - Q 31	0.71	0.72
6C - Q 42	0.37	0.45
7C - Q 37	0.35	0.42
7H - Q 43	0.18	0.39
7I - Q 39	0.31	0.61
7J - Q 45	0.22	0.34