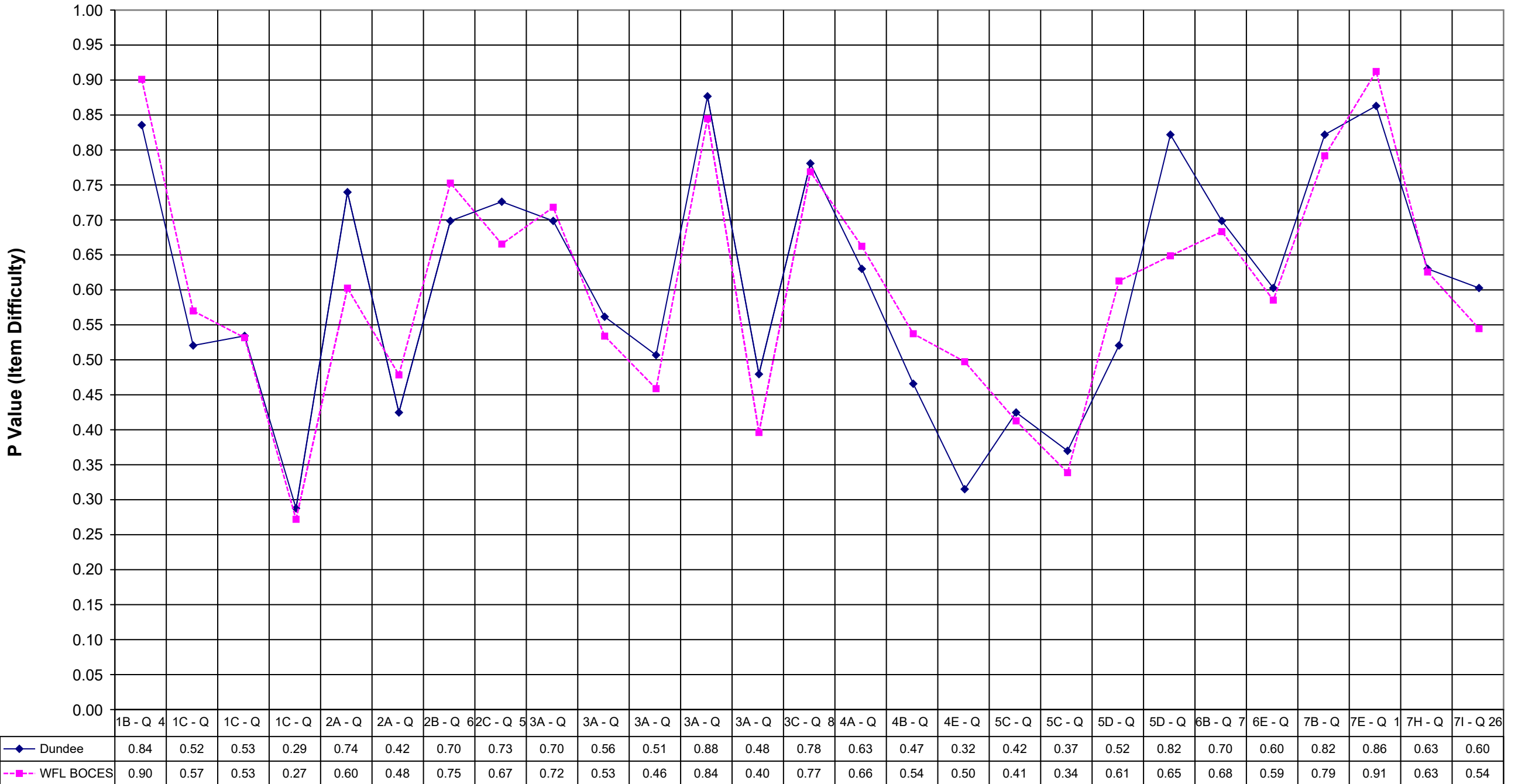
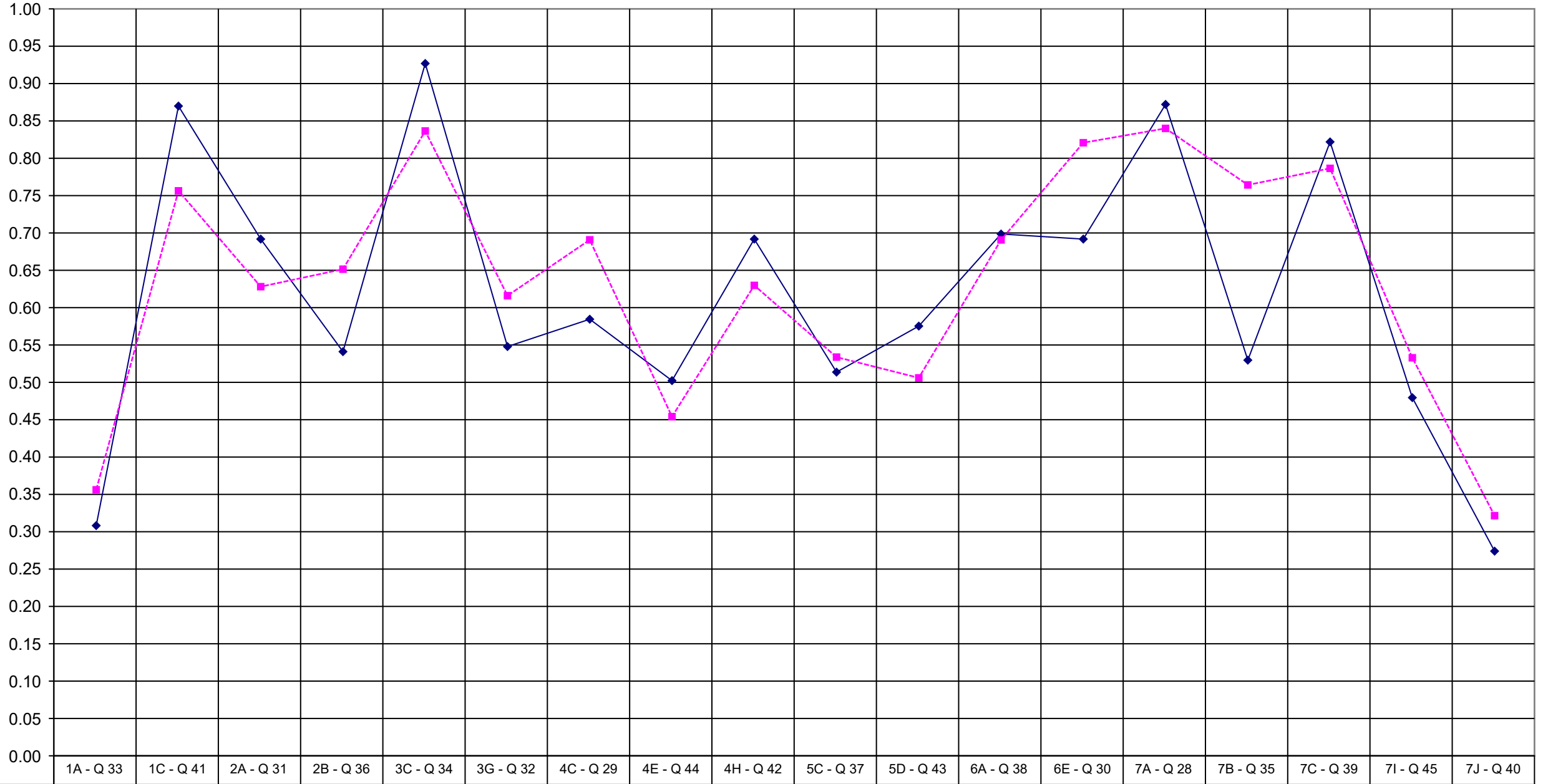


## 2004 Dundee Math 8 Multiple Choice



## 2004 Dundee Math 8 Extended Response



	1A - Q 33	1C - Q 41	2A - Q 31	2B - Q 36	3C - Q 34	3G - Q 32	4C - Q 29	4E - Q 44	4H - Q 42	5C - Q 37	5D - Q 43	6A - Q 38	6E - Q 30	7A - Q 28	7B - Q 35	7C - Q 39	7I - Q 45	7J - Q 40
◆ Dundee	0.31	0.87	0.69	0.54	0.93	0.55	0.58	0.50	0.69	0.51	0.58	0.70	0.69	0.87	0.53	0.82	0.48	0.27
■ WFL BOCES	0.36	0.76	0.63	0.65	0.84	0.62	0.69	0.45	0.63	0.53	0.51	0.69	0.82	0.84	0.76	0.79	0.53	0.32

	Dundee	WFL BOCES
1B - Q 4	0.84	0.90
1C - Q 18	0.52	0.57
1C - Q 25	0.53	0.53
1C - Q 27	0.29	0.27
2A - Q 14	0.74	0.60
2A - Q 16	0.42	0.48
2B - Q 6	0.70	0.75
2C - Q 5	0.73	0.67
3A - Q 2	0.70	0.72
3A - Q 21	0.56	0.53
3A - Q 24	0.51	0.46
3A - Q 3	0.88	0.84
3A - Q 9	0.48	0.40
3C - Q 8	0.78	0.77
4A - Q 10	0.63	0.66
4B - Q 20	0.47	0.54
4E - Q 13	0.32	0.50
5C - Q 22	0.42	0.41
5C - Q 23	0.37	0.34
5D - Q 15	0.52	0.61
5D - Q 17	0.82	0.65
6B - Q 7	0.70	0.68
6E - Q 12	0.60	0.59
7B - Q 11	0.82	0.79
7E - Q 1	0.86	0.91
7H - Q 19	0.63	0.63
7I - Q 26	0.60	0.54

	Dundee	WFL BOCES
1A - Q 33	0.31	0.36
1C - Q 41	0.87	0.76
2A - Q 31	0.69	0.63
2B - Q 36	0.54	0.65
3C - Q 34	0.93	0.84
3G - Q 32	0.55	0.62
4C - Q 29	0.58	0.69
4E - Q 44	0.50	0.45
4H - Q 42	0.69	0.63
5C - Q 37	0.51	0.53
5D - Q 43	0.58	0.51
6A - Q 38	0.70	0.69
6E - Q 30	0.69	0.82
7A - Q 28	0.87	0.84
7B - Q 35	0.53	0.76
7C - Q 39	0.82	0.79
7I - Q 45	0.48	0.53
7J - Q 40	0.27	0.32