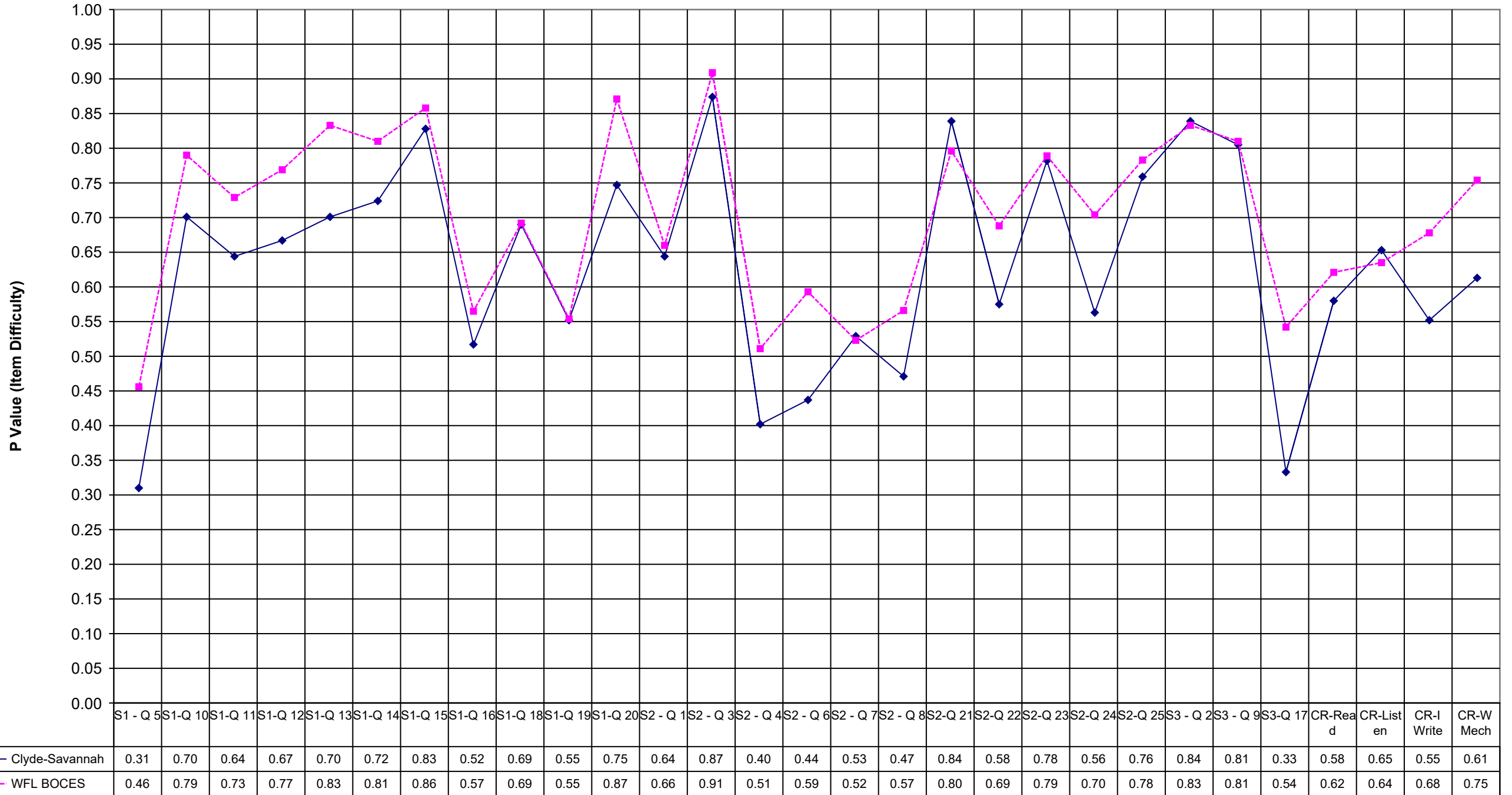


2003 Clyde-Savannah ELA 8



Clyde-Savannah WFL BOCES

S1 - Q 5	0.31	0.46
S1-Q 10	0.70	0.79
S1-Q 11	0.64	0.73
S1-Q 12	0.67	0.77
S1-Q 13	0.70	0.83
S1-Q 14	0.72	0.81
S1-Q 15	0.83	0.86
S1-Q 16	0.52	0.57
S1-Q 18	0.69	0.69
S1-Q 19	0.55	0.55
S1-Q 20	0.75	0.87
S2 - Q 1	0.64	0.66
S2 - Q 3	0.87	0.91
S2 - Q 4	0.40	0.51
S2 - Q 6	0.44	0.59
S2 - Q 7	0.53	0.52
S2 - Q 8	0.47	0.57
S2-Q 21	0.84	0.80
S2-Q 22	0.58	0.69
S2-Q 23	0.78	0.79
S2-Q 24	0.56	0.70
S2-Q 25	0.76	0.78
S3 - Q 2	0.84	0.83
S3 - Q 9	0.81	0.81
S3-Q 17	0.33	0.54
CR-Read	0.58	0.62
CR-Listen	0.65	0.64
CR-I Write	0.55	0.68
CR-W Mech	0.61	0.75