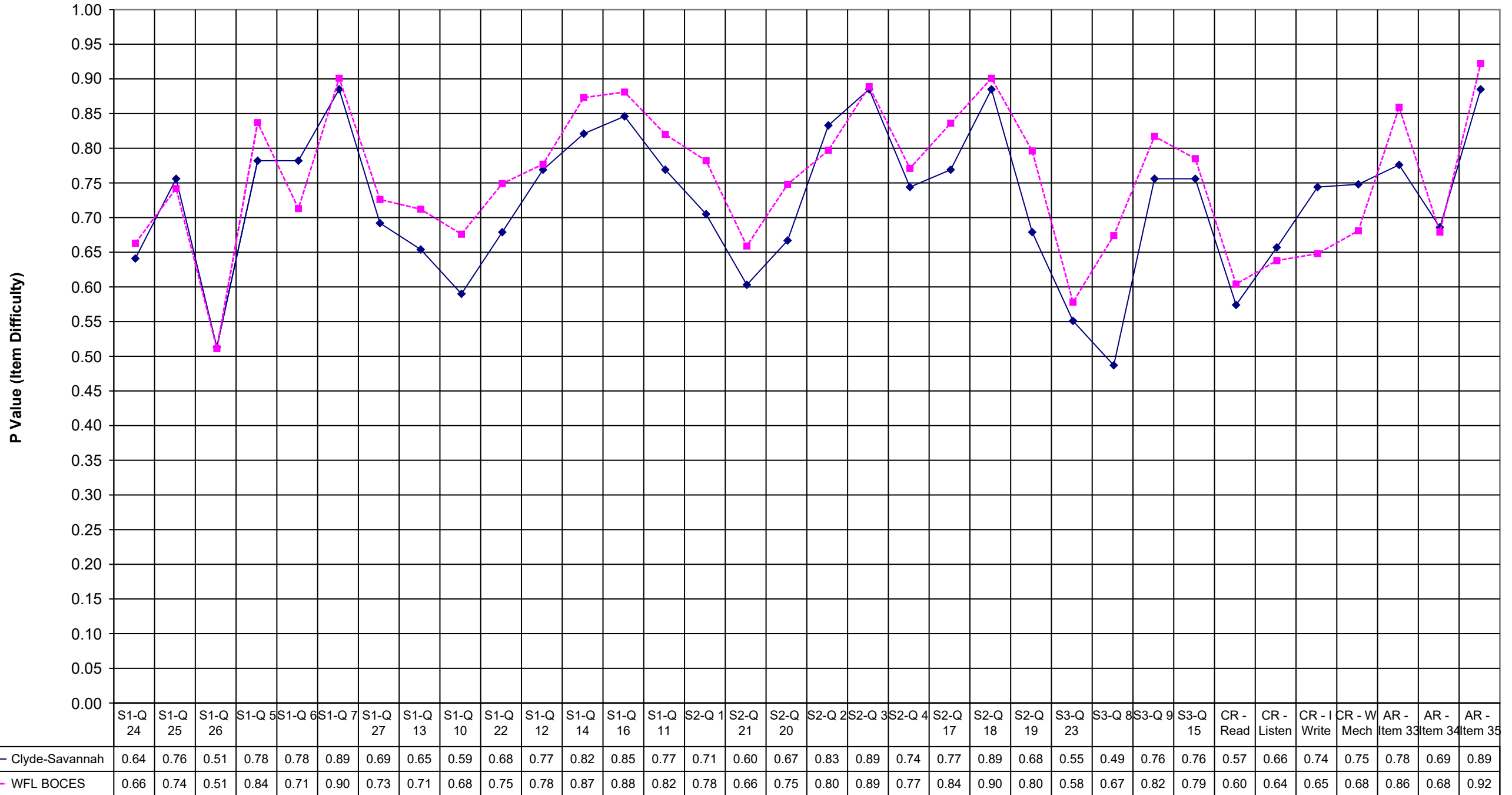


### 2003 Clyde-Savannah ELA 4



Clyde-Sava WFL BOCES

S1-Q 24	0.64	0.66
S1-Q 25	0.76	0.74
S1-Q 26	0.51	0.51
S1-Q 5	0.78	0.84
S1-Q 6	0.78	0.71
S1-Q 7	0.89	0.90
S1-Q 27	0.69	0.73
S1-Q 13	0.65	0.71
S1-Q 10	0.59	0.68
S1-Q 22	0.68	0.75
S1-Q 12	0.77	0.78
S1-Q 14	0.82	0.87
S1-Q 16	0.85	0.88
S1-Q 11	0.77	0.82
S2-Q 1	0.71	0.78
S2-Q 21	0.60	0.66
S2-Q 20	0.67	0.75
S2-Q 2	0.83	0.80
S2-Q 3	0.89	0.89
S2-Q 4	0.74	0.77
S2-Q 17	0.77	0.84
S2-Q 18	0.89	0.90
S2-Q 19	0.68	0.80
S3-Q 23	0.55	0.58
S3-Q 8	0.49	0.67
S3-Q 9	0.76	0.82
S3-Q 15	0.76	0.79
CR - Read	0.57	0.60
CR - Listen	0.66	0.64
CR - I Write	0.74	0.65
CR - W Mech	0.75	0.68
AR - Item 33	0.78	0.86
AR - Item 34	0.69	0.68
AR - Item 35	0.89	0.92