

Chronicle

Honor**Wisdom****Leadership****Truth**

Superintendent's Budget Message

The Chronicle this month deals almost entirely with the school budget for 2007-2008. Initially, I would like to commend our area legislators for their diligence in seeing to it that a timely State budget was adopted. Armed with information regarding State revenues we are better able to construct a spending plan for our school being ever mindful of the consequences to the local taxpayer.

As taxpayers you will be voting on two propositions. The first is the general budget. The second deals with the purchase of buses. This proposition allows us to remain on our bus replacement schedule.

The budget for next year totals \$17,441,300 and represents an increase of \$760,700 or 4.56%. The impact on the tax levy is calculated to be 1.95%. The tax levy is the total amount of money to be raised from local taxpayers. The 1.95% should not be confused with the amount your school property tax will increase. That number is calculated in August once the district is made aware of town equalization rates and increases in assessed valuation. General information is included in this newsletter to give you an approximation of what taxes might look like.

The budget maintains the same level of academic programming we presently enjoy. The biggest single expenditure in any school budget deals with salaries. Most of these are mandated by negotiated contracts. The 07-08 budget calls for the addition of one fifth grade teaching position due to class size. The 06-07 budget eliminated one building principal position by creating a grade 6-12 administrator. This was done to make room for administrative assistance to the new superintendent who will take over in July. This assistance will no longer be necessary and so we are creating the full time position of Assistant Principal/Athletic Director to help in the

-VOTE-**Tuesday, May 15, 2007****Noon. – 9:00 p.m.****Middle/High School Lobby****Absentee Ballots
Due by 5 p.m.**

To vote, you must be...

- a United States citizen;
- at least 18 years old;
- a resident of the school district for at least 30 days prior to the voting date.

The mission of the Keshequa Central School District is to provide opportunities to empower all students to be cooperative, self-directed lifelong learners, prepared to responsibly meet the challenges of the twenty-first century.

MEET THE CANDIDATES

Name: Jennifer Reichard

Family: Married for 17 years to Bruce, our children, Patrick and Amanda.

Education: Mt. Morris Central School

Employment: SUNY Geneseo

Qualifications & Activities: I have served on a committee to hire school superintendents and have listened to the community and heard their concerns, and in some cases, frustrations. I have been attending the KCS school board meetings for more than a year and have been an advocate for the children and the taxpayers. I have a working knowledge of board operations and budgeting and feel because of my experience I am supremely qualified to seek this office. I enjoy volunteering as a member of the KPTSA and my free time is spent with my family, reading and gardening.

Personal Statement: In Nunda, we have some of the highest taxes in Livingston County and are the only school in this county to be labeled by New York State as a school in need of improvement. Our children deserve better and we can do better. We must demand more for our kids and reel in unnecessary spending. This year we paid for two superintendents, but had an entire middle school without Math textbooks. It's time for a change.

I realize another issue of concern in this community is contracting out our bussing. I am against this. We have some great bus drivers who are an added form of protection for our children because they really know and care about them. Our children deserve all the protection we can give them. How can we justify saving pennies while we are wasting dollars?

We have a new building project and we need a person willing to hold the new superintendent and the construction manager accountable so things don't get off course. The Nunda/Dalton community can't afford any more mistakes. We need someone willing to stand up for what's right and to open the lines of communication so that every voice can be heard.

The school board represents the community. It's time for a change; change happens one vote at a time. Your vote does count and I'd like you to cast yours for me. Together we need to get back to basics and take care of our top priority - the kids. Thank you in advance and God bless.



Name: Paul Jackson

Family: Wife Diane and children Timothy & Kristen

Education: Masters in Computer Science, Syracuse University; BA in Math/Computer Science, SUNY Geneseo; HS Diploma from Keshequa Central School.

Employment: 2006 – 2007 SUNY Geneseo; Assistant Director for Information Systems. 1991-2006 Paychex Inc.; Manager of Application Development.

Qualifications and Activities: Manager in Information Technology field for 12 + years with personnel, budget and project management responsibilities. I have many years experience in coaching youth sports in the district and am involved in Theatre and music groups.

Personal Statement: I am pursuing a position on the school board in order to serve the community. I am very committed to providing the children of the district with an excellent education that helps them succeed in life. I am equally committed to managing our school district in a fiscally responsible manner.



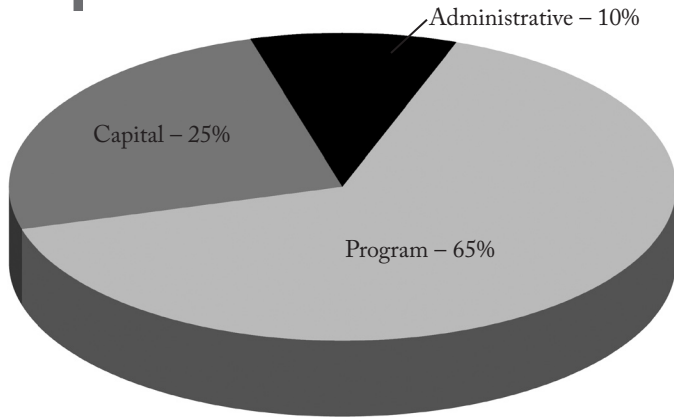
Superintendent's Message *continued...*

administration of a 6-12 building. Interestingly, this does not increase the number of administrators in the district but rather redirects the number we presently have. We also hope to create another reading position in the middle school but we are doing that within the constraints of the present budget.

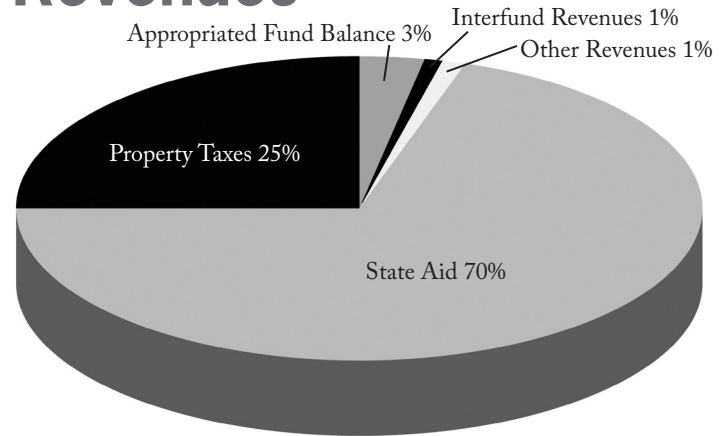
We hope you will take some time looking at the information provided. If you have any questions or would like more details, please feel free to give me a call at 468-2541.

PROPOSED BUDGET 2007-08

Expenditures



Revenues



	2006-2007	2007-2008	Difference
Administrative	\$1,713,082	\$1,791,164	\$78,082
Program	\$10,617,965	\$11,289,263	\$671,298
Capital	\$4,349,553	\$4,360,873	\$11,320
Total	\$16,680,600	\$17,441,300	\$760,700

	2006-2007	2007-2008	Difference
State Aid	\$11,416,342	\$12,201,279	\$784,937
Property Taxes	4,244,258	4,327,021	\$82,763
Appropriated Fund Balance	500,000	500,000	0
Interfund Revenues	200,000	182,000	(18,000)
Other Revenues	320,000	231,000	(89,000)
Total Projected Revenues	\$16,680,600	\$17,441,300	\$760,700

What does this proposal mean to the average Nunda homeowner?

Your own tax increase depends upon three main factors:

1. Where you live;
2. Changes in property assessments and final equalization rates;
3. Your participation in STAR (i.e., senior citizens are eligible for STAR reductions of up to \$59,380 while non-senior homeowners are eligible for STAR reductions of up to \$31,360. Businesses and rental properties are not eligible for STAR).

for a home assessed at **\$50,000**

Assessed value	50,000
STAR deduction	-31,360
Net assessment	18,640
Est. 2007-08 tax rate/\$1,000	21.97
2006-07 tax rate per \$1,000	21.55
Difference	.42
Est. tax increase	\$7.83

for a home assessed at **\$100,000**

Assessed value	100,000
STAR deduction	-31,360
Net assessment	68,640
Est. 2007-08 tax rate/\$1,000	21.07
2006-07 tax rate per \$1,000	21.55
Difference	
Est. tax increase	\$28.83

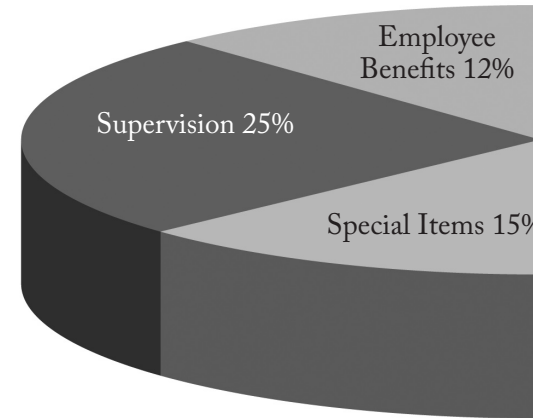
PROPOSED BUDGET 2007-08

Proposed Administrative Budget

This category encompasses the costs associated with the governance and administration of the school district. It includes the salaries and benefits of the Superintendent, the District Office Staff and all Administrators.

	2006/07 Budget	2007/08 Proposed	Percent of Budget
Board of Education	\$36,084	\$28,292	1%
Central Administration	226,700	157,500	9%
Finance	240,066	260,216	15%
Legal Services	28,865	29,775	2%
Central Services (data processing)	386,035	382,594	21%
Special Items (insurance & BOCES adm.)	204,566	271,816	15%
Supervision (regular schools & curriculum)	411,791	450,105	25%
Employee Benefits	219,511	210,866	12%
Total	\$1,753,618	\$1,791,164	10%

Proposed Administrative Budget

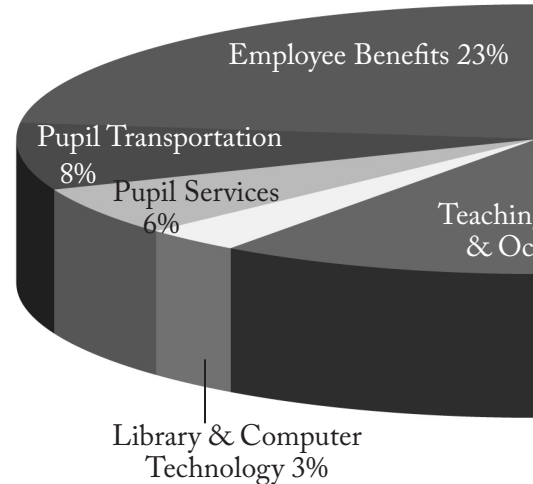


Proposed Program Budget

This category includes salaries and benefits of teachers, all program expenditures, and all transportation operating expenses.

	2006/07 Budget	2007/08 Proposed	Percent of Budget
Teaching Regular School	\$3,893,491	\$4,188,052	37%
Teaching Special Ed. & Occ. Ed.	2,488,716	2,593,615	23%
Library & Computer Technology	393,797	366,360	3%
Pupil Services (guidance, health serv., athletics)	574,467	648,075	6%
Pupil Transportation	847,989	867,519	8%
Community Services	14,000	13,500	0%
Employee Benefits	2,405,505	2,612,142	23%
Total	\$10,617,965	\$11,289,263	65%

Proposed Program Budget

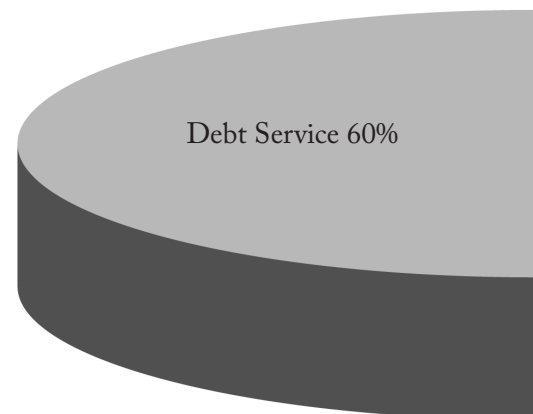


Proposed Capital Budget

This category includes all debt service (bonds and notes) as well as facilities costs (custodial salaries and benefits), leases, service contracts, supplies, utilities, maintenance and repairs).

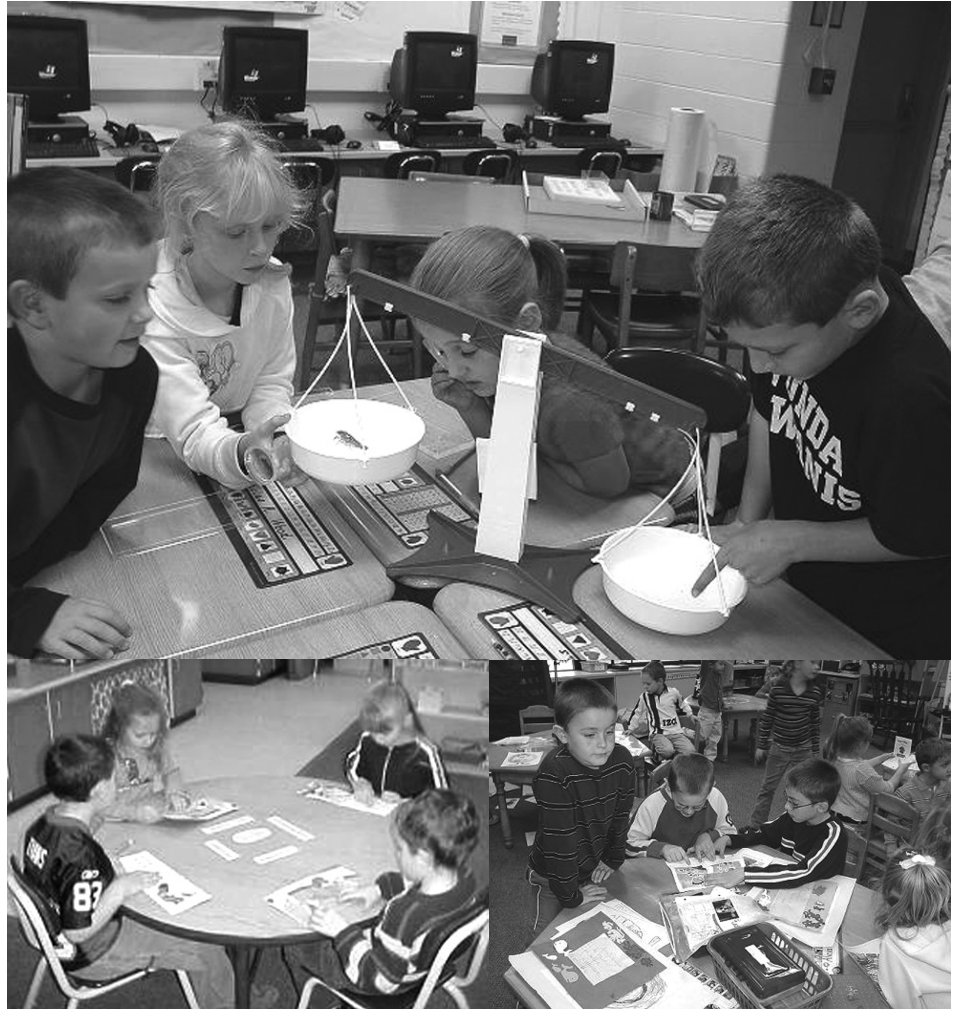
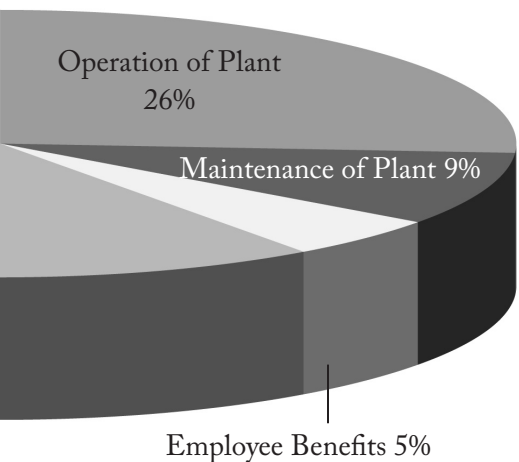
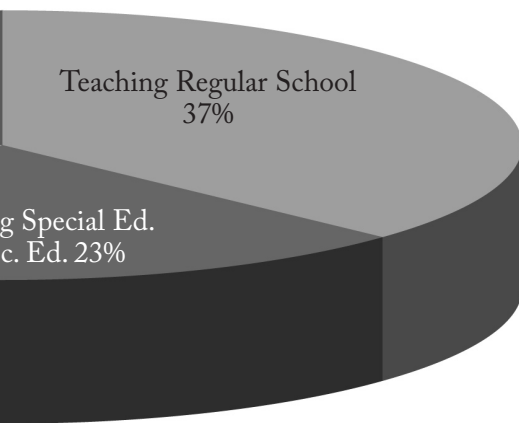
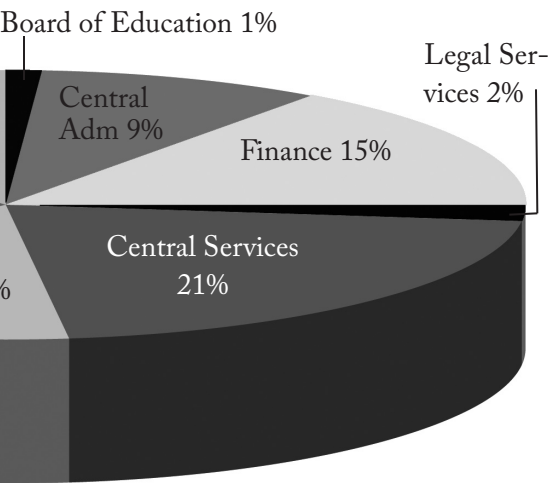
	2006/07 Budget	2007/08 Proposed	Percent of Budget
Operation of Plant	\$1,103,724	\$1,146,500	26%
Maintenance of Plant	339,507	371,600	9%
Employee Benefits	246,353	227,458	5%
Debt Service	2,619,433	2,615,315	60%
Total	\$4,309,017	\$4,360,873	25%

Proposed Capital Budget



Total Proposed Basic Budget \$16,680,600 \$17,441,300 100%

PROPOSED BUDGET 2007-08



Voter qualifications

In order to participate in the voting process, you must be...

- a United States citizen;
- at least 18 years old;
- a resident of the school district for at least 30 days prior to the voting date.

Absentee ballot info

Applications for absentee ballots may be obtained from District Clerk Tammy Clark during school hours, 8:00 a.m. to 4:00 p.m. Completed applications must be received by the District Clerk at least seven days prior to the election (May 8, 2007) if the ballot is to be mailed, or the day before the election (May 14, 2007) if the ballot is to be issued in person.

The District Clerk must receive completed absentee ballots no later than 5 p.m. on Tuesday, May 15, 2007.

KCS SCHOOL REPORT CARD

The New York State School Report Card

Fiscal Accountability Supplement for Dalton-Nunda Central School District (Keshequa)

2004-2005 School Year		General Education	Special Education
This School District	Instructional Expenses	\$7,096,972	\$2,735,509
	Pupils	893	151
	Expenditures Per Pupil	\$7,947	\$18,116
Similar District Group	Instructional Expenses	\$1,345,416,025	\$438,431,945
	Pupils	174,937	26,888
	Expenditures Per Pupil	\$7,691	\$16,306
All Public Schools in NY State	Instructional Expenses	\$24,597,895,983	\$7,812,458,291
	Pupils	2,799,412	404,382
	Expenditures Per Pupil	\$8,787	\$19,320
Similar District Group Description: Average Need/Resource Capacity			

New York State Education Law and the Commissioner's Regulations require the attachment of the New York State school report card information to the public school district budget proposal. The regulations require that certain expenditure ratios for general education and special education students be reported and compared with ratios for similar districts and all public schools. The required ratios for this district are reported at left.

Instructional Expenditures for General Education are K-12 expenditures for classroom instruction (excluding Special Education plus a proration of building level administrative and instructional support expenditures). These expenditures include amounts for instruction of pupils with disabilities in a regular education setting.

The pupil count for General Education is K-12 average daily membership plus K-12 pupils for whom the district pays tuition to another school district. This number represents all pupils, including both those classified as having disabilities and those not so classified. For districts in which a county jail is located, this number includes incarcerated youth to whom the district must provide an education program.

Instructional Expenditures for Special Education are K-12 expenditures for students with disabilities (including summer special education expenditures) plus a proration of building-level administrative and instructional support expenditures.

The pupil count for Special Education is a count of K-12 students with disabilities as of December 1, 2002 plus students for whom the district receives tuition from another district.

Expenditures Per Pupil is the simple arithmetic ratio of Instructional Expenditures to Pupils. The total cost of instruction for pupils with disabilities may include both general and special education expenditures. Special education services provided in the general education classroom may benefit students not classified as having disabilities.

District expenditures such as transportation, debt service, and district-wide administration are not included in these values. The numbers use to compute the statistics on this page were collected on the State Aid Form A, the State Aid Form F, and the School District Annual Financial Report (ST-3).

Similar District Groups are identified according to the Need-to-Resource-Capacity Index defined and used in the Annual Report to the Governor and Legislature on the Educational Status of the State's Schools.

The New York State School Report Card Information about Students with Disabilities for Dalton-Nunda Central School District (Keshequa)

New York State Education Law and the Commissioner's Regulations require the attachment of school report card information to the public school district budget proposal. The regulations require that the percentage of students with disabilities receiving services outside of general classroom settings and the classification rate of pupils with disabilities for the district be reported and compared with percentages for similar districts and all public schools. The required ratios for this district are reported below.

Student counts as of December 1, 2005	This District		Statewide
	Counts of Students with Disabilities	Percentage of Students with Disabilities*	Percentage of Students with Disabilities
20% or less	74	55.2%	54.5%
21% to 60%	33	24.6%	13.1%
More than 60%	24	17.9%	25.5%
Separate Settings	3	2.2%	6.9%

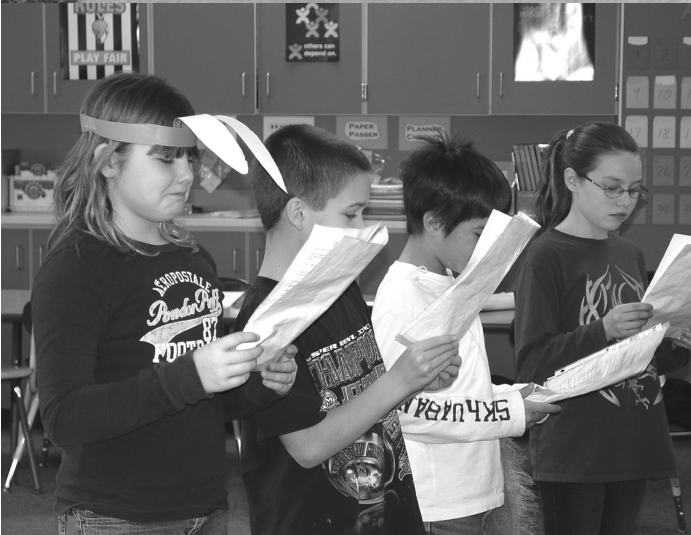
The source data for the statistics in this table were reported on the Report of the Number of Students with Disabilities Provided Special Education in Regular School-based Programs and in Separate Settings (PD-1/4). The counts are numbers of students reported in the several placements for school-age programs (ages 6-21) on December 1, 2004. The PD-1/4 reports the proportion of time students are outside general education classrooms, regardless of the amount and cost of special education services they receive. Rounding of percentage values may cause them to sum to a number slightly different from 100%.

School-age Students with Disabilities Classification Rate

2005-06	This District	Statewide
Resident Classification Rate	14.49%	12.3%

This rate is the ratio of the count of school-age (6-21) residents in the district who are classified as having disabilities, divided by a computed measure of the total district-resident school-age population (including public school students, non-public school students, and students receiving home instruction). Source data are drawn from the School District Report of the Number of Students with Disabilities (PD-1), and the Basic Education Data System (BEDS).

IT'S ALL ABOUT THE FUTURE



KESHEQUA CENTRAL SCHOOL DISTRICT BUDGET NOTICE

Overall budget proposal	Budget adopted for the 2006-07 school year	Budget proposed for the 2007-08 school year	Contingency budget for the 2007-08 school year
Total Budget amount	\$16,680,600	\$17,441,300	\$17,403,300
Increase/decrease for the 2007-08 school year		\$760,700	\$722,700
Percentage increase (decrease) in each proposed budget		4.56%	4.33%
Change in the consumer price index		3.20%	
Resulting est. property tax levy for the 2007-08 school year		\$4,327,021	\$4,289,021
Administrative component	\$1,713,082	\$1,791,164	\$1,791,164
Program component	\$10,617,965	\$11,289,263	\$11,270,263
Capital component	\$4,349,553	\$4,360,873	\$4,341,873

Statement on Contingency Budget Assumptions:

According to state regulations the district must prepare a contingent budget so that the taxpayers will see the difference between the state allowed increase for a contingent budget and the district proposed budget. The state allows two budget votes before the contingent budget must be implemented. To satisfy a contingent budget, the District would not have to reduce its proposed budget in total. However, the District would have to remove all equipment and community expenditures.

Basic STAR Exemption impact:

Estimated Basic STAR Exemption savings on a hypothetical home within the school district with a full value of one hundred thousand dollars (\$100,000).

	Budget adopted for the 2006-07 school year	Budget proposed for the 2007-08 school year
Basic STAR tax savings	\$675.81	\$688.98
School tax increase/decrease	\$56.76	\$13.17
Net Basic STAR tax	\$619.05	\$675.81

Absentee Ballots: Absentee ballots may be applied for at the District Clerk's office. A list of absentee voters will be available for public inspection in the office of the District Clerk beginning on April 24, 2007 between the hours of 8:00 a.m. and 4:00 p.m. and each Monday through Friday until and including May 15, 2007. Persons designated by the Livingston County Board of Election as "permanently disabled" pursuant to the provision of the election law will automatically receive an absentee ballot. Absentee ballots must be filed with the District Clerk by 5 p.m. on the day of the vote, May 15, 2007.

The annual budget vote for the fiscal year 2007-08 by the qualified voters of the Keshequa Central School District will be held at the Middle/High School Lobby, Nunda, on Tuesday, May 15, 2007, between the hours of noon and 9:00 p.m., prevailing time, at which time the polls will be opened to vote by voting ballot or machine.

Copies of the popular budget may be obtained from the District Clerk

Keshequa Central School

P.O. Box 517
Nunda, New York 14517-0517

Budget Newsletter, May 2007

NONPROFIT
ORGANIZATION
US POSTAGE
PAID
PERMIT NO. 1
NUNDA NY 14517

School Board Members

Anita Buchinger
Theron Foote
John Gordinier
Lori Gray
Terry Lowell, Vice-President
Lyle Tallman
Kevin Whiteman, President

Edward Stores, *Interim Superintendent*
Dominic Aloisio, *Business Administrator*